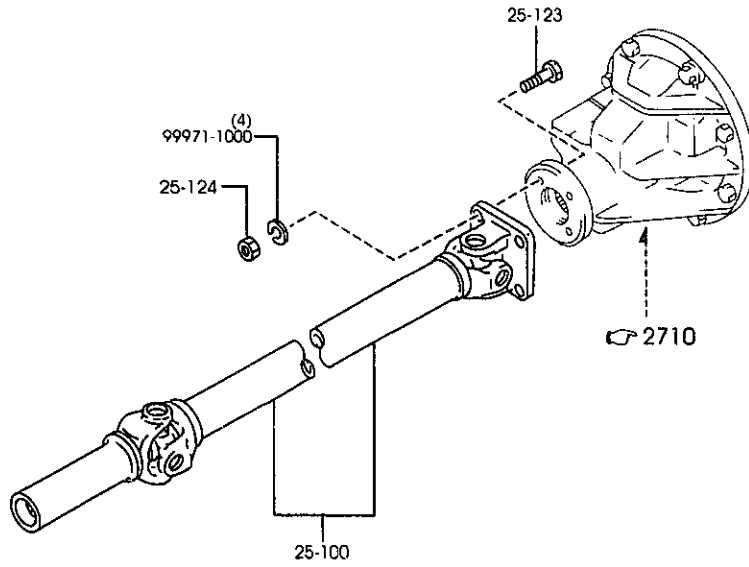


2505A REAR PROPELLER SHAFT

2505A -1 * REAR PROPELLER SHAFT



PART NO.	QTY	MODEL/RESTRICTION	MODEL/RESTRICTION	MODEL/RESTRICTION	FROM-TO
25-100		SHAFT, PROPELLER-FRT			
MF04-25-100	1	(NT)			
MF06-25-100	1	(AT)			
25-123		BOLT			
P011-25-123	4				
25-124		NUT			
1368-25-124	4				



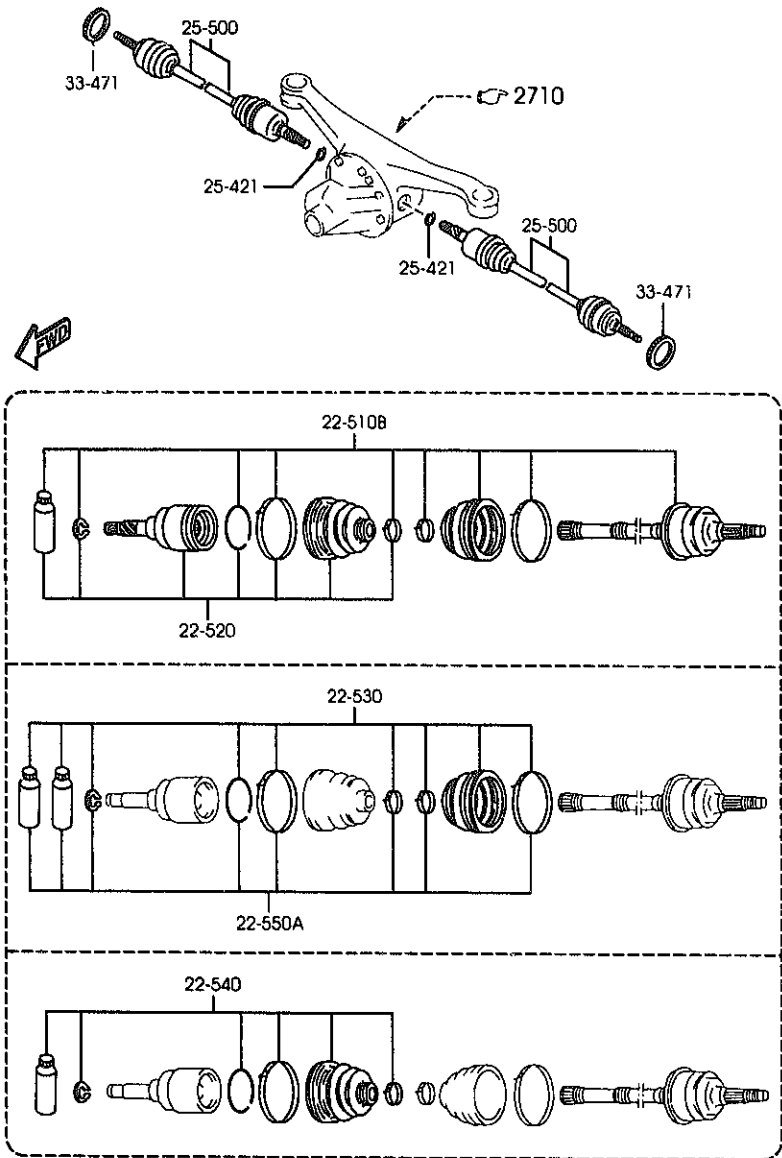
AUNA07

(1N04040)

CAT. AUNA07-05

2000-01

2550A REAR DRIVE SHAFT



AUNA07

(1N08000)

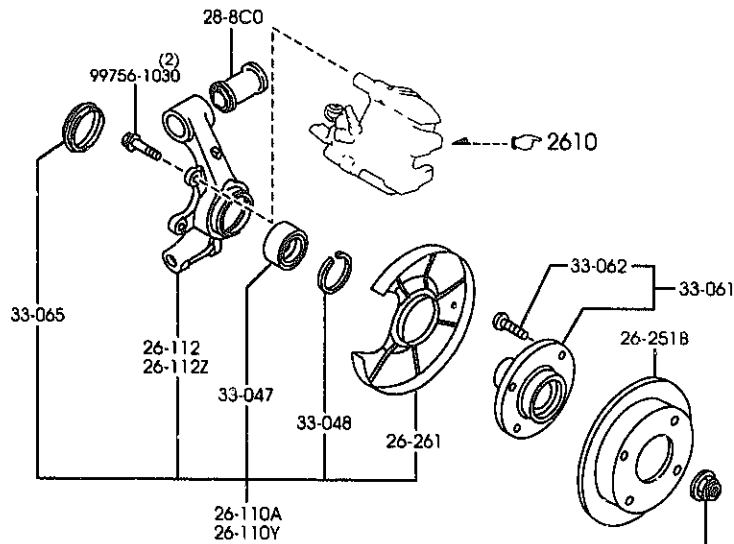
2550A -1 * REAR DRIVE SHAFT

PART NO.	QTY	MODEL/RESTRICTION	MODEL/RESTRICTION	MODEL/RESTRICTION	FROM-TO
22-510B		JOINT SET, OUTER			
MD11-22-510A	2	(W/O A. LOCK BRAKE)			-8C01
MD12-22-510A AN(MD12-22-510B)	2	(W/A. LOCK BRAKE)			-9501
MD12-22-510A AN(MD12-22-510B)	2	(W/O A. LOCK BRAKE)			8C01-9501
MD12-22-510B	2				9501-
22-520		JOINT SET, INNER			
MD02-22-520A	2				
22-530		BOOT SET, OUTER JOINT			
M090-22-530	2				
22-540		BOOT SET, INNER JOINT			
M090-22-540	2				
22-550A		CLIP SET, DRIVE SHAFT			
M090-22-550	2				
25-421		CLIP			
G003-25-421	2				
25-500		SHAFT, DRIVE			
MD11-25-500A	2	(W/O A. LOCK BRAKE)			-8C01
MD12-25-500A AN(MD12-25-500B)	2	(W/A. LOCK BRAKE)			-9501
MD12-25-500A AN(MD12-25-500B)	2	(W/O A. LOCK BRAKE)			8C01-9501
MD12-25-500B	2				9501-
33-471		ROTOR, SENSOR-FRT A. B			
BC4C-33-471	2	(W/A. LOCK BRAKE)			
8C01 NB353*-124914					
9501 NB353*-137711					

CAT. AUNA07-05

2000-01

2600A REAR AXLE



2600A -1 REAR AXLE

PART NO.	QTY	MODEL/RESTRICTION	MODEL/RESTRICTION	MODEL/RESTRICTION	FROM-TO
26-110A		KNUCKLE(R),REAR			
NC10-26-130	1	(W/O A. LOCK BRAKE)			
NC14-26-130	1	(W/A. LOCK BRAKE)			
26-110Y		KNUCKLE(L),REAR			
NC10-26-140	1	(W/O A. LOCK BRAKE)			
NC14-26-140	1	(W/A. LOCK BRAKE)			
26-112		SUPPORT(R),HUB			
NC10-26-112A	1	(W/O A. LOCK BRAKE)			
NC14-26-112A	1	(W/A. LOCK BRAKE)			
26-112Z		SUPPORT(L),HUB			
NC10-26-122A	1	(W/O A. LOCK BRAKE)			
NC14-26-122A	1	(W/A. LOCK BRAKE)			
26-251B		PLATE,DISC			
BR74-26-251E	2				
26-261		COVER,DUST			
B530-26-261B	2				
28-8C0		BUSHING,RUBBER			
NA01-28-8C0C	2				
33-042		NUT			
GJ21-33-042B	2				
33-047		BEARING,WHEEL			
B455-33-047C	2				
33-048		RING,RETAINING-DISC PLATE			
H260-33-048 AN(B21M-33-048)	2				
B21M-33-048	2				8101-
33-061		HUB,WHEEL			
B01A-33-060A	2				
33-062		BOLT,HUB			

8101 NB353R-102707

-8101

8101-



AUNA07

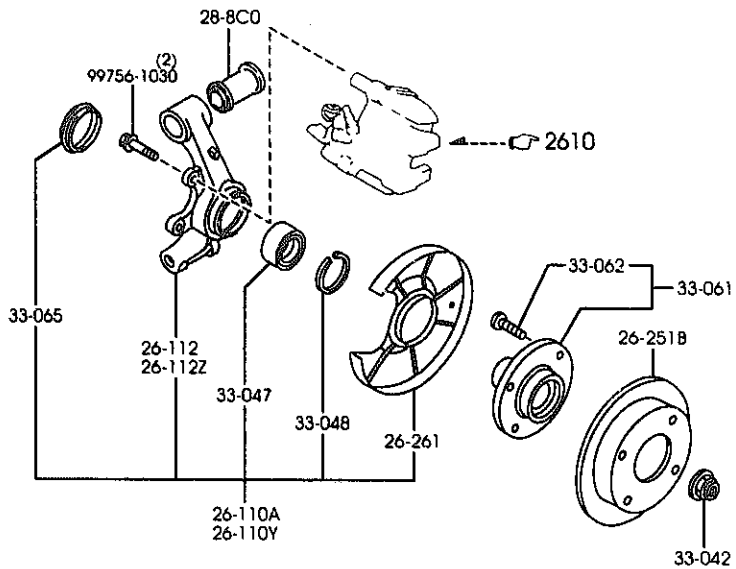
(1N04060)

CAT. AUNA07-05

2000-01

2600A REAR AXLE

2600A -2 * REAR AXLE



PART NO.	QTY	MODEL/RESTRICTION	MODEL/RESTRICTION	MODEL/RESTRICTION	FROM-TO
CONT'D					
801Y-33-062	8				
33-065		SEAL,OIL-AXLE			
6304-33-065	2				



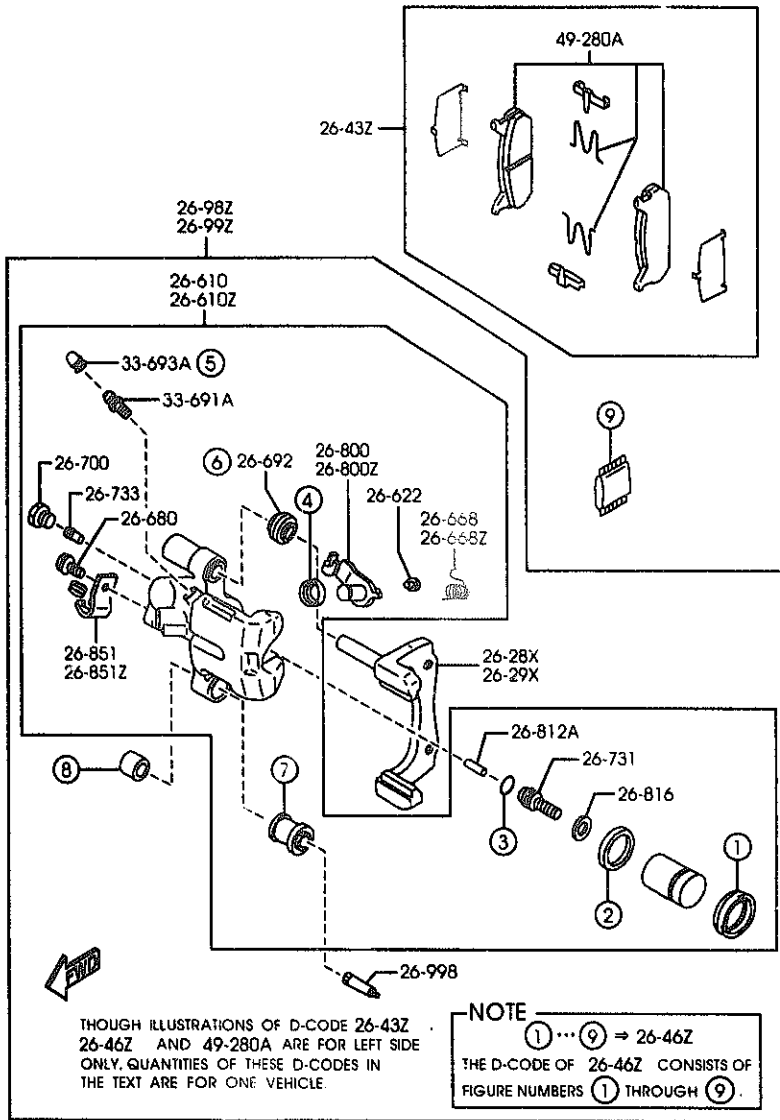
AUNA07

(1N04060)

CAT. AUNA07-05

2000-01

2610A REAR BRAKE MECHANISMS



AUNA07

(1N05840)

2610A -1 REAR BRAKE MECHANISMS

PART NO.	QTY	MODEL/RESTRICTION	MODEL/RESTRICTION	MODEL/RESTRICTION	FROM-TO
26-28X NA75-26-28X	1	SUPPORT(R), MOUNTING			
26-29X NA75-26-29X	1	SUPPORT(L), MOUNTING			
26-43Z NAV5-26-43ZA	1	PAD SET, RR CALIPER			
26-46Z NAV1-26-46ZA A (NAV1-26-46ZB)	1	SEAL & BODY SET, CAL-RR			-8701
26-46Z NAV1-26-46ZB	1				8701-
26-610 NA75-26-61XB AN(NA75-26-61XC)	1	BODY & PISTON(R), CALIPER			-8801
26-610Z NA75-26-61XC	1				8801-
26-610Z NA75-26-71XB AN(NA75-26-71XC)	1	BODY & PISTON(L), CALIPER			-8801
26-610Z NA75-26-71XC	1				8801-
26-622 BWOH-26-696	2	PIN, STOPPER-RR CALIPER			
26-668 BWOH-26-668	1	SPRING(R), LEVER			
26-668Z BWOH-26-669	1	SPRING(L), LEVER			
26-680 BWOH-26-680	2	BOLT			
26-692 GAZE-26-692	2	BODY, GUIDE PIN			
26-700 BWOH-26-700	2	PLUG, SCREW			

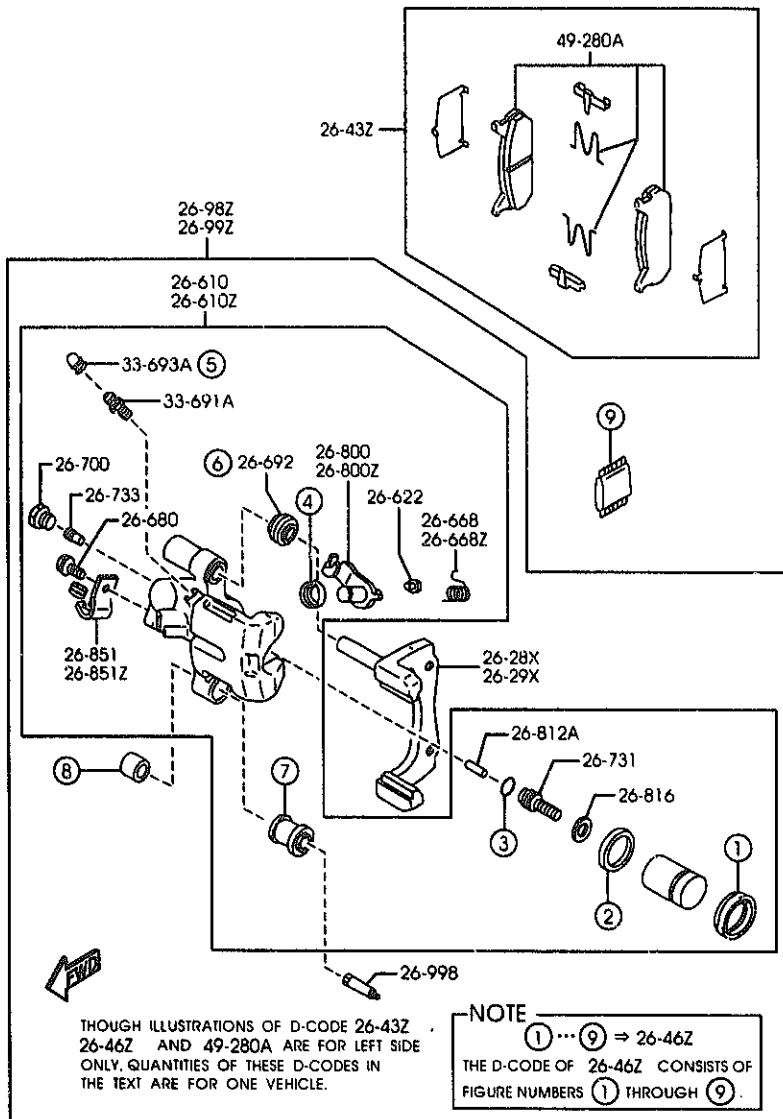
8701 NB353R-121922
 8801 NB353R-121854

CAT. AUNA07-05

2000-01

2610A REAR BRAKE MECHANISMS

2610A -2 REAR BRAKE MECHANISMS



PART NO.	QTY	MODEL/RESTRICTION	MODEL/RESTRICTION	MODEL/RESTRICTION	FROM-TO
26-731		SPINDLE, ADJUSTER			
HA75-26-731	2				
26-733		GEAR, ADJUST			
BW0H-26-733	2				
26-800		LEVER(R), OPERATING			
BC1F-26-800A A (BC1F-26-800B)	1				-8801
BC1F-26-800B	1				8801-
26-800Z		LEVER(L), OPERATING			
BC1F-26-810A A (BC1F-26-810B)	1				-8801
BC1F-26-810B	1				8801-
26-812A		ROD, PUSH-FRT CALIPER			
BW0H-26-812	2				
26-816		RING, SNAP-RR CALIPER			
GAZE-26-816	2				
26-851		BRACKET(R), CABLE			
BW0H-26-851	1				
26-851Z		BRACKET(L), CABLE			
BW0H-26-861	1				
26-98Z		CALIPER(R), PADLESS-R			
HAZ5-26-98ZB AN(HAZ5-26-98ZC)	1				-8801
HAZ5-26-98ZC	1				8801-
26-99Z		CALIPER(L), PADLESS-R			
HAZ5-26-99ZB AN(HAZ5-26-99ZC)	1				-8801
HAZ5-26-99ZC	1				8801-
26-998		PIN, GUIDE			
BW0H-26-998A	2				
8801 NB353M-121854					

AUNA07

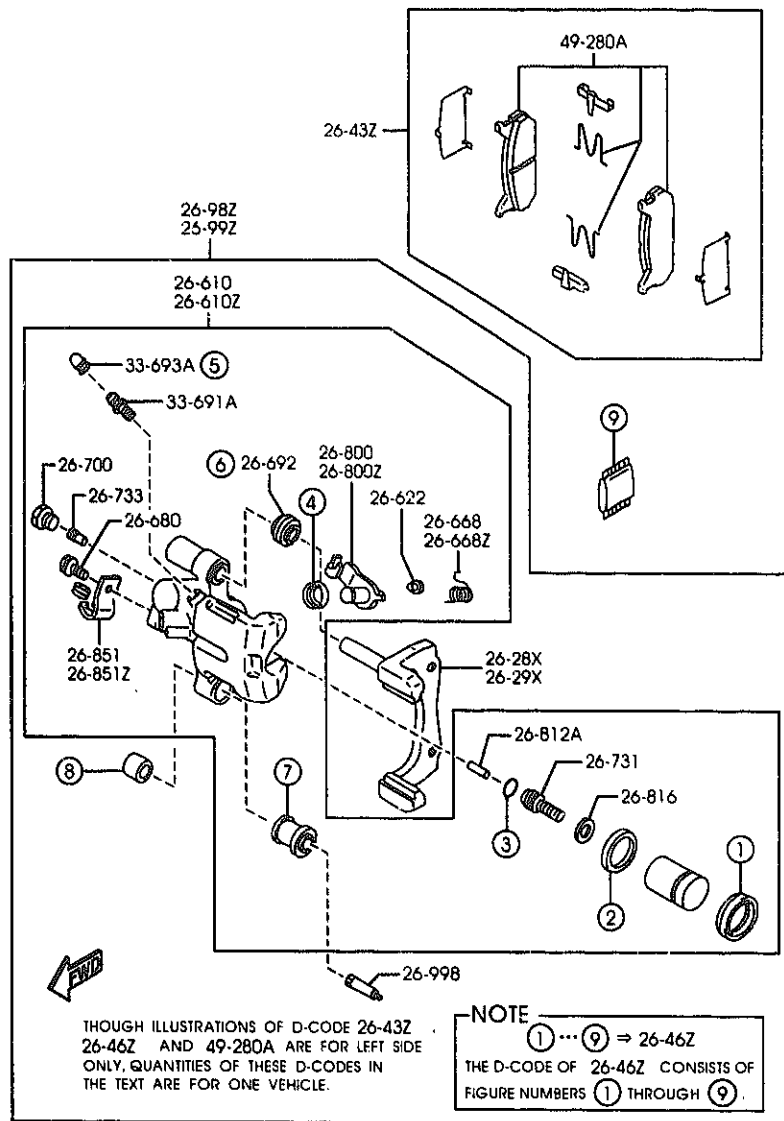
(1N05840)

CAT. AUNA07-05

2000-01

2610A REAR BRAKE MECHANISMS

2610A -3 * REAR BRAKE MECHANISMS



PART NO.	QTY	MODEL/RESTRICTION	MODEL/RESTRICTION	MODEL/RESTRICTION	FROM-TO
33-691A BWH-26-691	2	SCREW, BLEEDER			
33-693A 0259-33-693	2	CAP, BLEEDER SCREW			
49-280A NAY5-26-48Z	1	PAD SUB SET, RR CALIP ER			

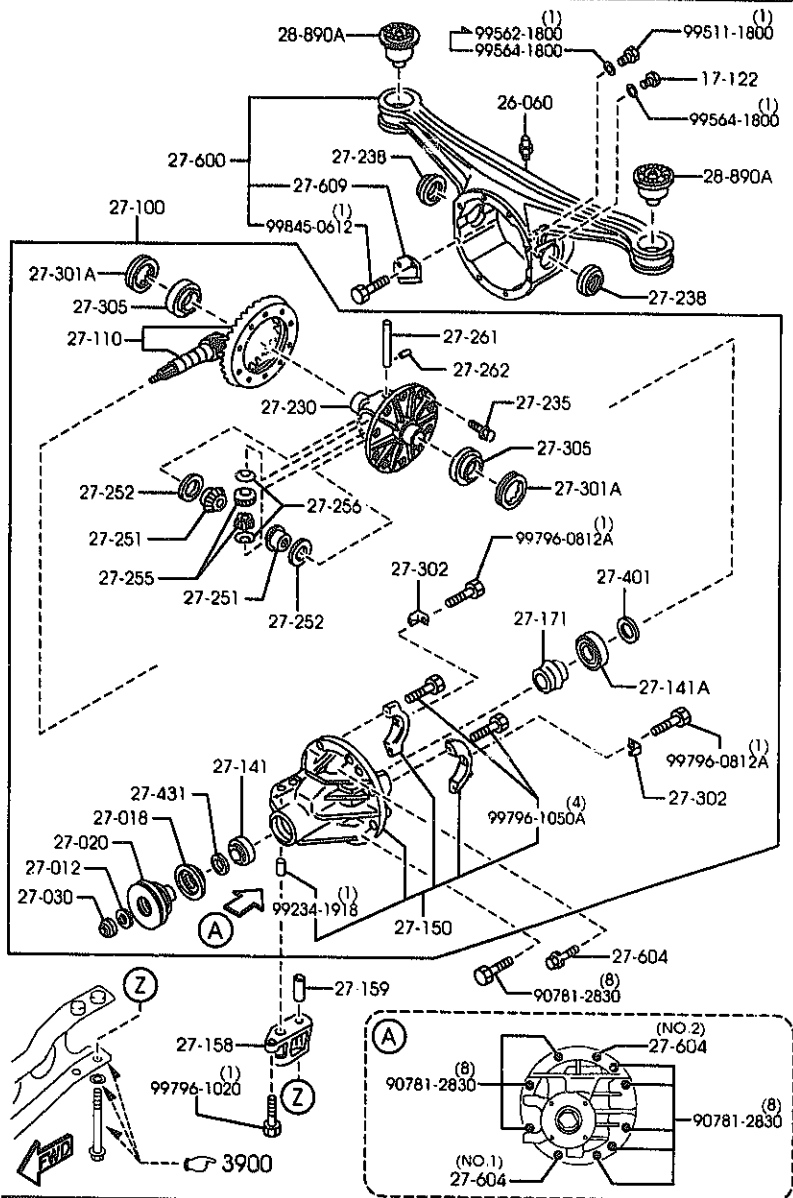
AUNA07

(1N05840)

CAT. AUHA07-05

2000-01

2710A REAR DIFFERENTIALS
(NORMAL DIFF.)



AUNA07

(1N08080)

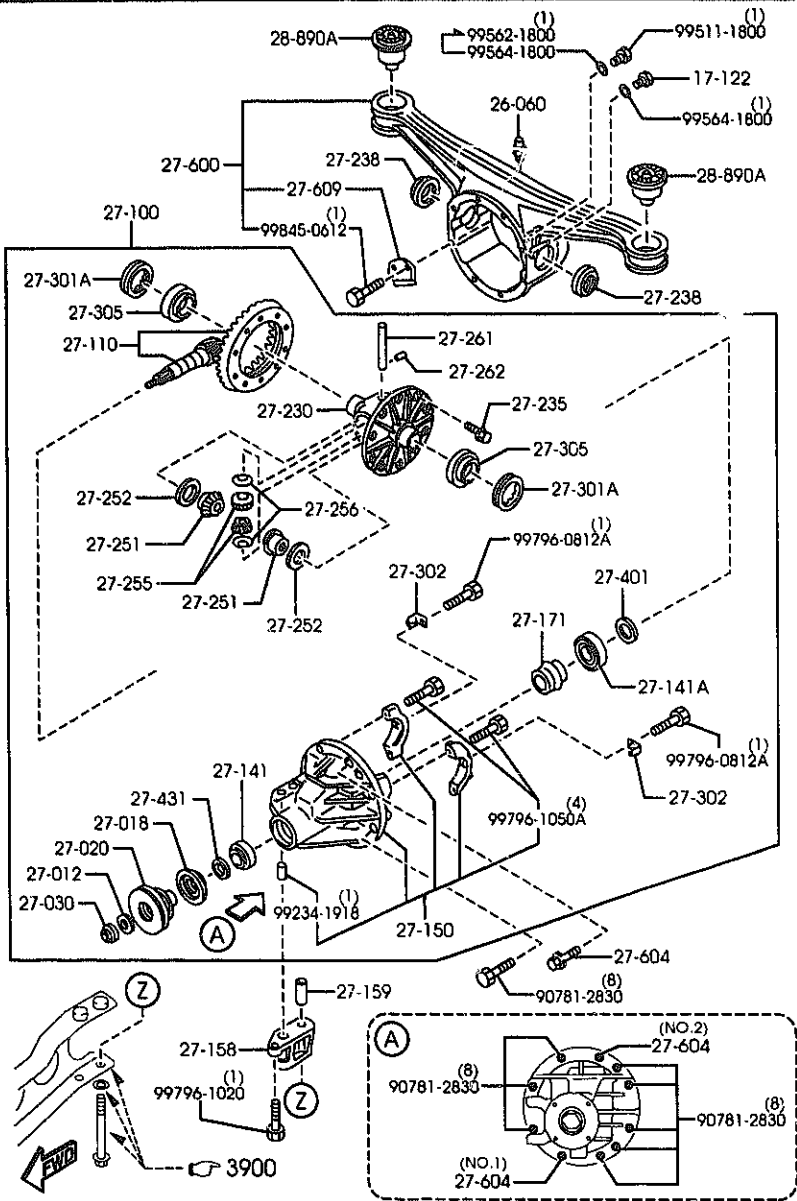
2710A -1 REAR DIFFERENTIALS
(NORMAL DIFF.)

PART NO.	QTY	MODEL/RESTRICTION	MODEL/RESTRICTION	MODEL/RESTRICTION	FROM-TO
17-122		PLUG, MAGNET			
0810-17-121	1				
26-060		BREATHER			
0730-26-060	1				
27-012		WASHER			
0223-27-012	1				
27-018		SEAL, OIL			
MA02-27-165A	1				
27-020		FLANGE, COMPANION			
MA02-27-120A	1 (AT)				
MA03-27-120A AN(MA03-27-120B)	1 (MT)				-7C24
MA03-27-120B	1 (MT)				7C24-
27-030		NUT, LOCK			
0223-27-030	1				
27-100		DRIVING & DIFF.			
MA02-27-100	1 (AT)				
MA11-27-100	1 (MT)				
27-110		GEAR SET, FINAL			
NO61-27-110C	1 (MT) R=4.300				
NO68-27-110B	1 (AT) R=4.100				
27-141		BEARING, PINION			
0755-27-210	1				
27-141A		BEARING, PINION			
MO25-27-210	1				
27-150		CARRIER, DIFFERENTIAL			
MA02-27-150A	1				
27-158		SPACE			
7C24 NB353R-102379					

CAT. AUNA07-05

2000-01

2710A REAR DIFFERENTIALS
(NORMAL DIFF.)



AUNA07

(1N08080)

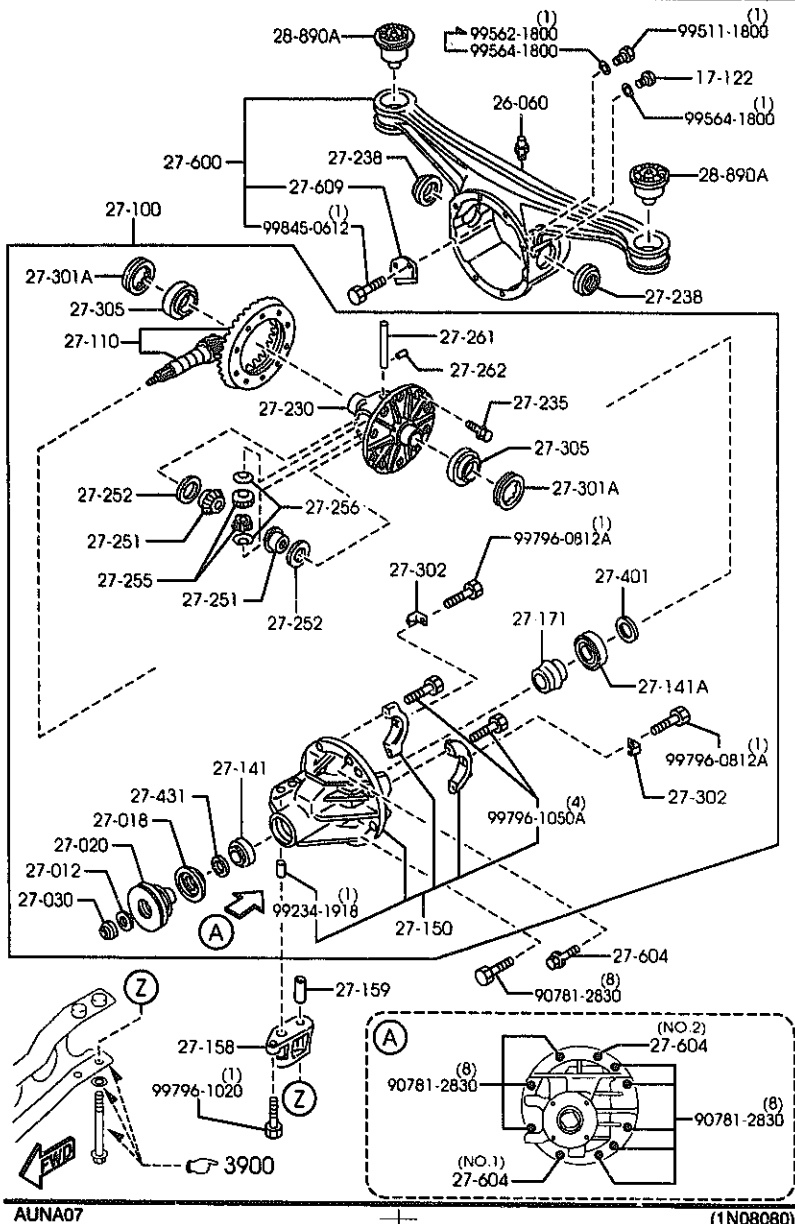
2710A -2 REAR DIFFERENTIALS
(NORMAL DIFF.)

PART NO.	QTY	MODEL/RESTRICTION	MODEL/RESTRICTION	MODEL/RESTRICTION	FROM-TO
CONF'D MA02-27-158	1				
27-159		PIN, TUBULAR			
MA02-27-159	1				
27-171		PIECE, DISTANCE			
M035-27-171	1				
27-230		CASE, DIFF. GEAR			
M069-27-231	1				
27-235		BOLT, RING GEAR			
8051-27-235	10	D=10.2MM			
8051-27-236	10	D=10.0MM			
27-238		SEAL, OIL			
MA02-27-238 AN(MA02-27-238A)	2				-8C21
MA02-27-238A	2				8C21-
27-251		GEAR, DIFF. SIDE			
M069-27-251	2				
27-252		WASHER			
0290-27-252	2	T=2MM			
0290-27-253	2	T=2.1MM			
0290-27-254	2	T=2.2MM			
0290-27-256	2	T=2.05MM			
0290-27-259	2	T=2.15MM			
27-255		PINION, DIFFERENTIAL			
M025-27-255C A (M025-27-255D)	2				-8420
M025-27-255D	2				8420-
27-256		WASHER, THRUST			
8420 NB353R-115899 8C21 NB353R-126395					

CAT. AUNA07-05

2000-01

2710A REAR DIFFERENTIALS
(NORMAL DIFF.)



AUNA07

(1N08080)

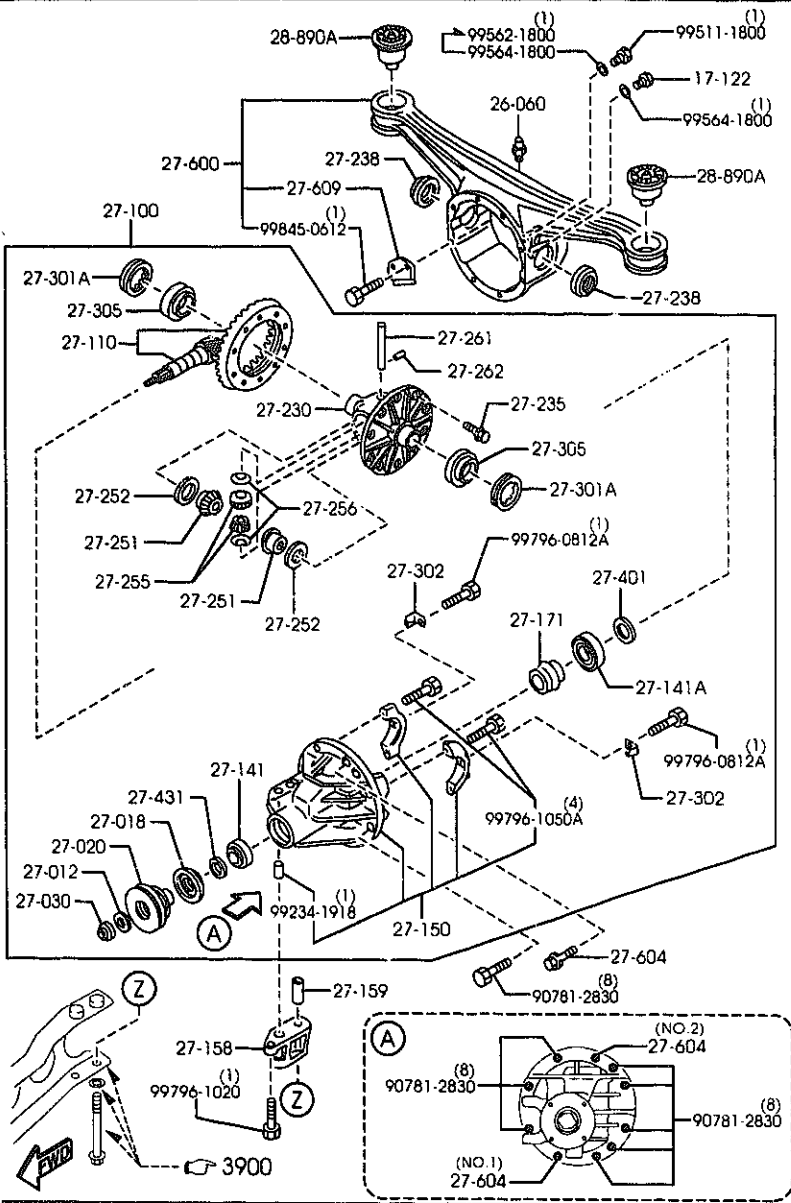
2710A -3 REAR DIFFERENTIALS
(NORMAL DIFF.)

PART NO.	QTY	MODEL/RESTRICTION	MODEL/RESTRICTION	MODEL/RESTRICTION	FROM-TO
CONT'D					
M025-27-256	2	T=2.0MM			
27-261		SHAFT,DIFF. PINION			
M025-27-261A	1				
27-262		PIN			
0114-27-262	1				
27-301A		SCREW,ADJUST			
0290-27-301	2				
27-302		PLATE,LOCK			
0290-27-302	2				
27-305		BEARING			
221-27-350	2				
27-401		SPACER			
0223-27-401A	1	T=3.08MM			
0223-27-402A	1	T=3.11MM			
0223-27-403A	1	T=3.14MM			
0223-27-404A	1	T=3.17MM			
0223-27-405A	1	T=3.2MM			
0223-27-406A	1	T=3.23MM			
0223-27-407A	1	T=3.26MM			
0223-27-408A	1	T=3.29MM			
0223-27-409A	1	T=3.32MM			
0223-27-411A	1	T=3.35MM			
0223-27-412A	1	T=3.38MM			
0223-27-413A	1	T=3.41MM			
0223-27-414A	1	T=3.44MM			

CAT. AUNA07-05

2800-01

2710A REAR DIFFERENTIALS
(NORMAL DIFF.)



AUNA07

(1N08080)

2710A -4 REAR DIFFERENTIALS
(NORMAL DIFF.)

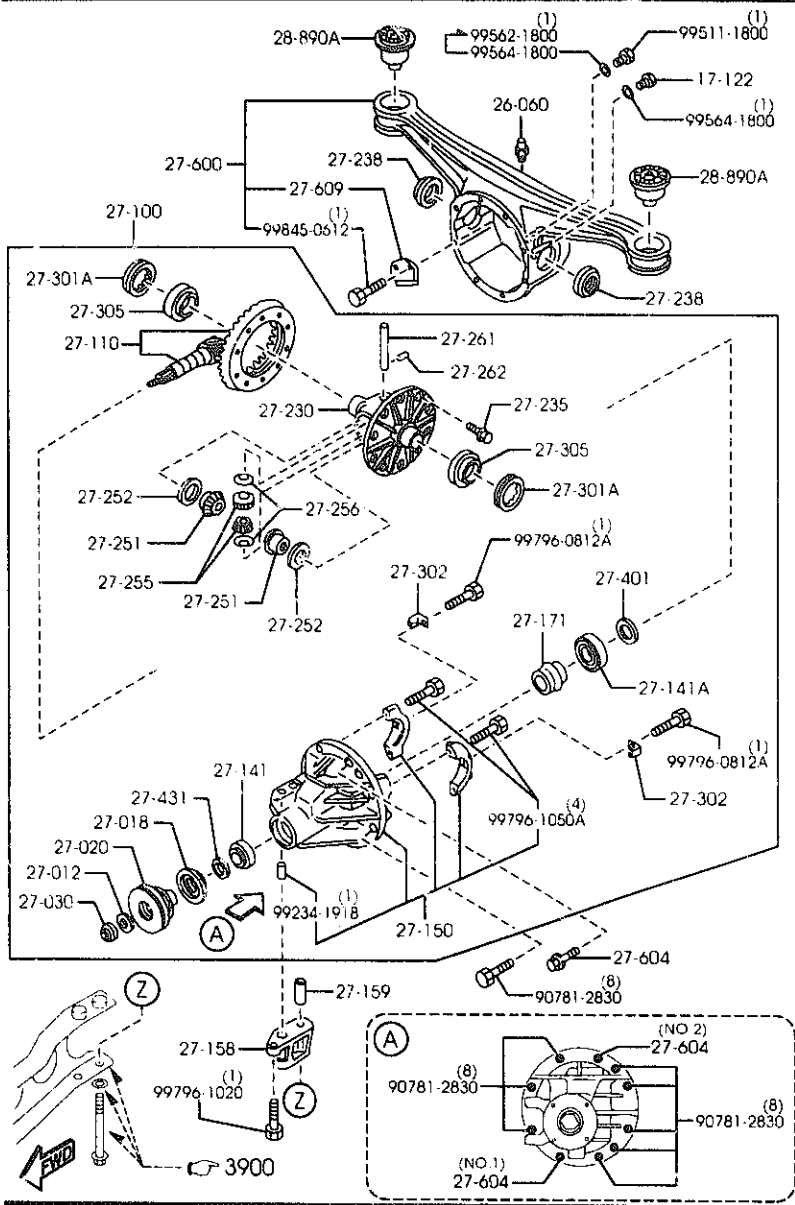
PART NO.	QTY	MODEL/RESTRICTION	MODEL/RESTRICTION	MODEL/RESTRICTION	FROM-TO
CONT'D					
	1				
0223-27-415A	1	T=3.47MM			
0223-27-416	1	T=3.095MM			
0223-27-417	1	T=3.125MM			
0223-27-418	1	T=3.155MM			
0223-27-419	1	T=3.185MM			
0223-27-422	1	T=3.215MM			
0223-27-423	1	T=3.245MM			
0223 27-424	1	T=3.275MM			
0223-27-425	1	T=3.305MM			
0223-27-426	1	T=3.335MM			
0223-27-427	1	T=3.365MM			
0223-27-428	1	T=3.395MM			
0223-27-433	1	T=3.425MM			
0223-27-434	1	T=3.455MM			
27-431	1	SPACER			
PA01-27-431	1				
27-600	1	CASING, DIFFERENTIAL			
MA02-27-600A	1				
27-604	1	BOLT, CARRIER			
M053-27-604	1	(ILLUST. NO. 1)			
M053-27-605	1	(ILLUST. NO. 2)			
27-609	1	PLATE, BAFFLE-DIFF CASING			
NOA1-27-609A	1				

CAT. AUNA07-05

2000-01

2710A REAR DIFFERENTIALS
(NORMAL DIFF.)

2710A -5 * REAR DIFFERENTIALS
(NORMAL DIFF.)



PART NO.	QTY	MODEL/RESTRICTION	MODEL/RESTRICTION	MODEL/RESTRICTION	FROM-TO
28-890A		RUBBER,SUB FRAME MTC			
NA01-28-890	2				

AUNA07

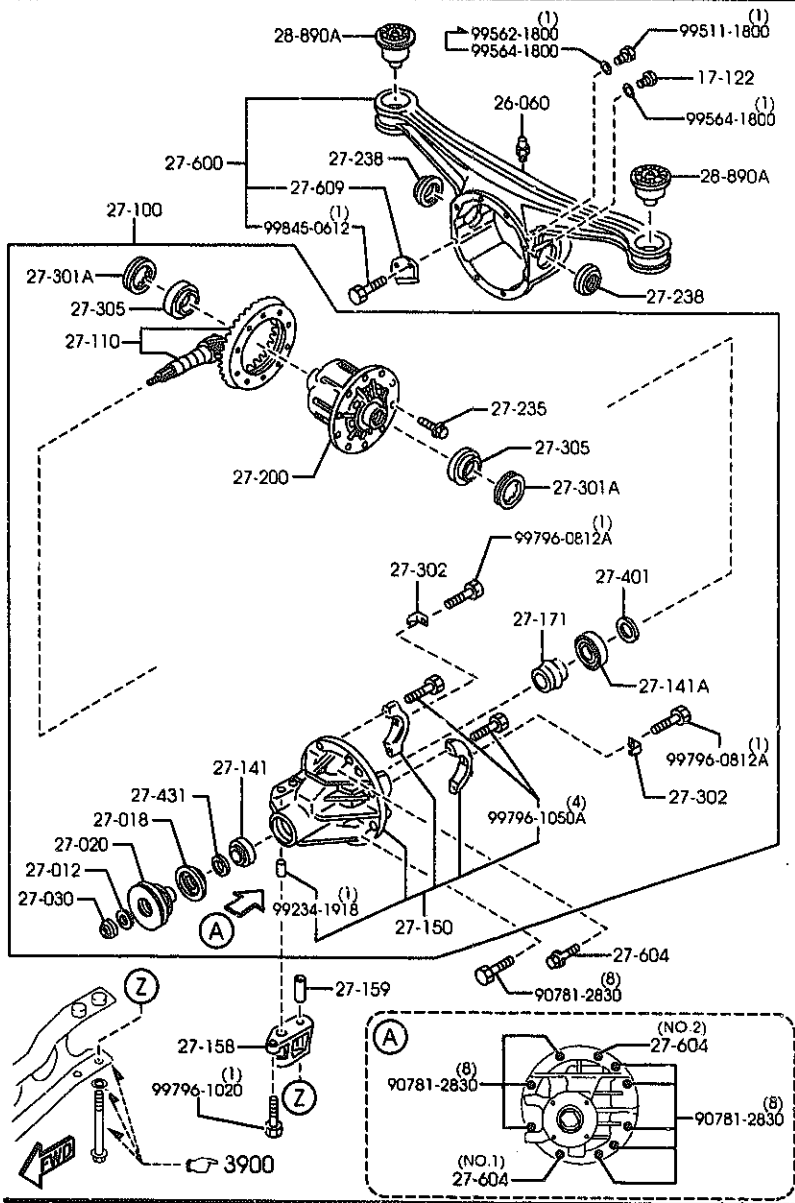
(1N08080)

CAT. AUNA07-05

2000-01

1-N11

2710B REAR DIFFERENTIALS
(LIMITED SLIP DIFF.)



AUNA07

(1N08090)

2710B -1 REAR DIFFERENTIALS
(LIMITED SLIP DIFF.)

PART NO.	QTY	MODEL/RESTRICTION	MODEL/RESTRICTION	MODEL/RESTRICTION	FROM-TO
17-122		PLUG,MAGNET			
0B10-17-121	1				
26-060		BREATHER			
0730-26-060	1				
27-012		WASHER			
0223-27-012	1				
27-018		SEAL,OIL			
MA02-27-165A	1				
27-029		FLANGE,COMPANION			
MA03-27-120A AN(MA03-27-120B)	1				-7C24
MA03-27-120B	1				7C24-
27-030		NUT,LOCK			
0223-27-030	1				
27-100		DRIVING & DIFF.			
MM07-27-1U0B	1	(6-SP)			
MM08-27-100	1	(5-SP)			
27-110		GEAR SET,FINAL			
M037-27-110B	1	R=3.909 (6-SP)			
M061-27-110C	1	R=4.300 (5-SP)			
27-141		BEARING,PINION			
0755-27-210	1				
27-141A		BEARING,PINION			
M025-27-210	1				
27-150		CARRIER,DIFFERENTIAL			
MA02-27-150A	1				
27-15B		SPACE			
MA02-27-15B	1				

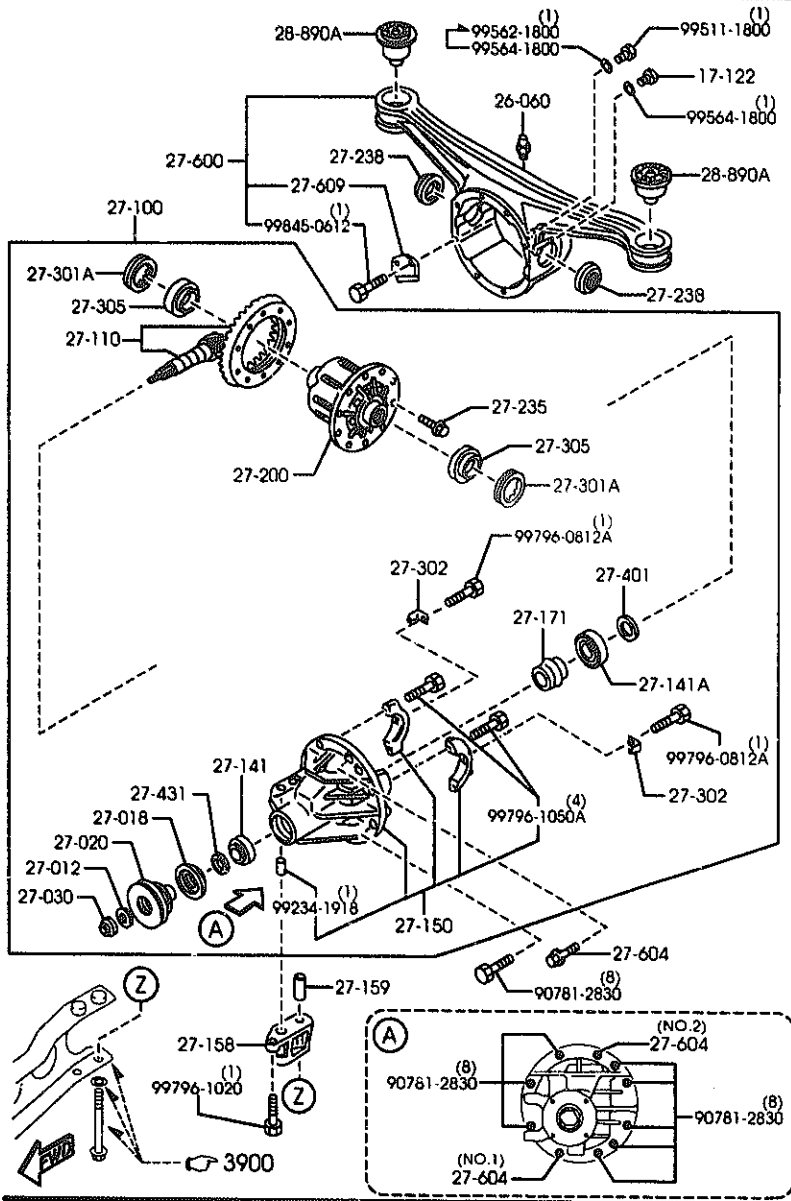
7C24 NB353H-102379

CAT. AUNA07-05

2000-01

2710B REAR DIFFERENTIALS
(LIMITED SLIP DIFF.)

2710B -4 * REAR DIFFERENTIALS
(LIMITED SLIP DIFF.)



PART NO.	QTY	MODEL/RESTRICTION	MODEL/RESTRICTION	MODEL/RESTRICTION	FROM-TO
27-600		CASING, DIFFERENTIAL			
MA02-27-600A	1				
27-604		BOLT, CARRIER			
M053-27-604	1 (ILLUST. NO.1)				
M053-27-605	1 (ILLUST. NO.2)				
27-609		PLATE, BAFFLE-DIFF CASING			
M0A1-27-609A	1				
28-890A		RUBBER, SUB FRAME MTG			
NA01-28-890	2				

AUNA07

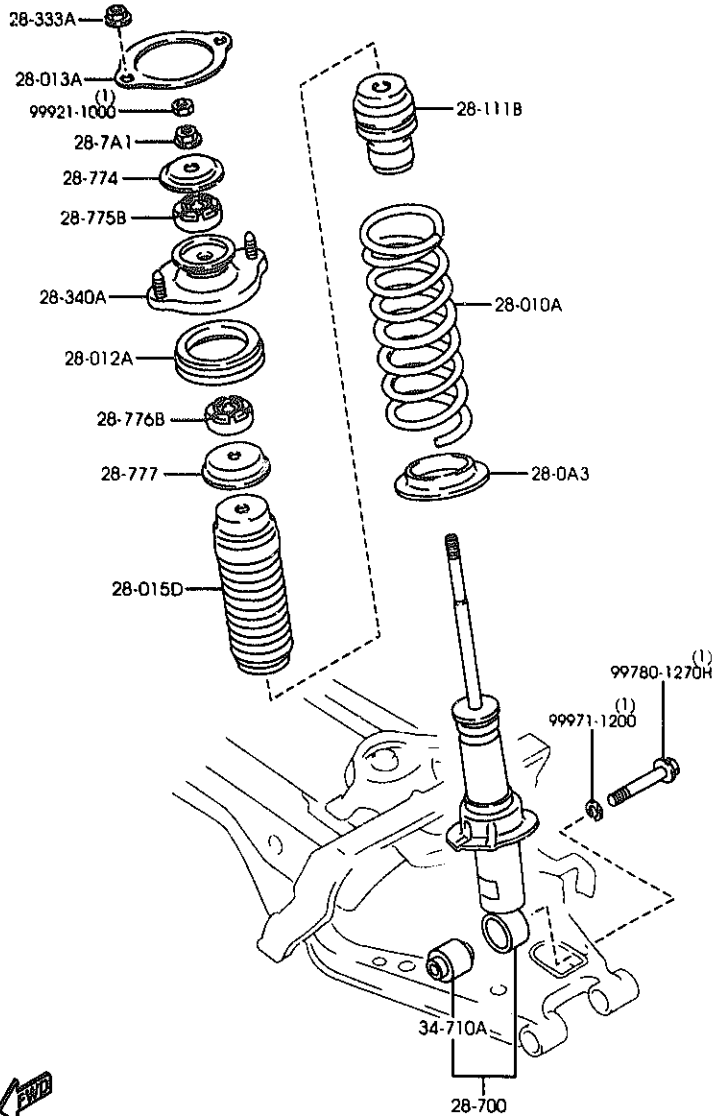
(1N08090)

CAT. AUNA07-05

2000-01

2800A REAR SUSPENSION MECHANISMS

2800A -1 REAR SUSPENSION MECHANISMS



PART NO.	QTY	MODEL/RESTRICTION	MODEL/RESTRICTION	MODEL/RESTRICTION	FROM-TO
28-0A3		RUBBER, SPRING SHEET			
NC10-28-0A3 AN(NC10-28-0A3A)	2				-8801
NC10-28-0A3A	2				8801-
28-010A		SPRING, COIL-REAR			
NC10-28-011B	2	(NOR. SUSP) (SPORT SUSP)			
NC12-28-011C	2	(HARD SUSP)			
28-012A		SHEET, RUBBER			
NC10-28-012B	2				
28-013A		SHEEL, RUBBER			
G030-28-013A	2				
28-015D		BOOT, DUST			
NC10-28-015A	2				
28-111B		STOPPER, BUMP			
NC10-28-111B	2				
28-333A		NUT, FLANGE			
H001-28-333	4				
28-340A		SHEET, SPRING-UPPER			
NC10-28-340B	2				
28-7A1		NUT, FLANGE-RR DAMPER			
D061-28-7A1	2				
28-700		DAMPER, REAR			
NC10-28-700C	2	(NOR. SUSP) (SPORT SUSP)			
NC12-28-700C AN(NC12-28-700D)	2	(HARD SUSP)			-9201
NC12-28-700D	2	(HARD SUSP)			9201-
28-774		RETAINER, REAR DAMPER			
NC10-28-774	2				
8801 NB353#-121854 9201 NB353#-130051					

AUNA07

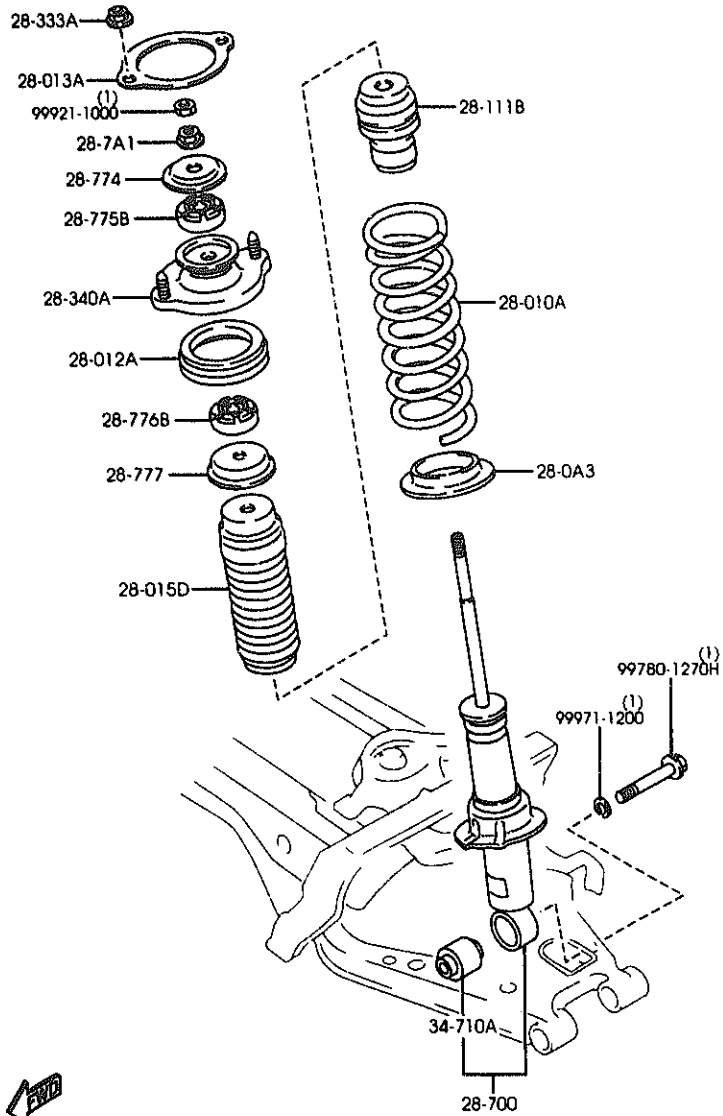
(1N05880)

CAT. AUNA07-05

2800-01

2800A REAR SUSPENSION MECHANISMS

2800A -2 * REAR SUSPENSION MECHANISMS



PART NO.	QTY	MODEL/RESTRICTION	MODEL/RESTRICTION	MODEL/RESTRICTION	FROM-TO
28-775B NC10-28-775	2	BUSH,REAR DAMPER-UPPER			
28-776B NC10-28-776	2	BUSH,REAR DAMPER-LOWER			
28-777 NC10-28-777	2	WASHER			
34-710A NC10-34-710	2	BUSHING,DAMPER-LOWER			

AUNA07

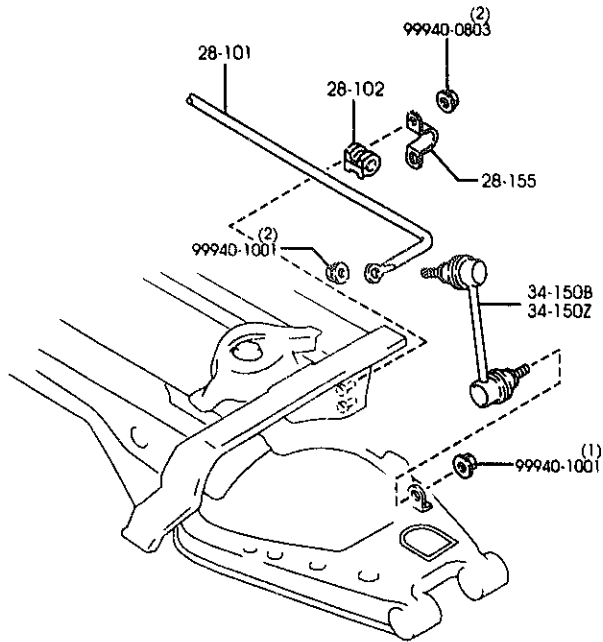
(1N05880)

CAT. AUNA07-05

2000-01

2810A REAR STABILIZER

2810A -1 # REAR STABILIZER



PART NO.	QTY	MODEL/RESTRICTION	MODEL/RESTRICTION	MODEL/RESTRICTION	FRON-TO
28-101	1	STABILIZER,RR			
HC12-28-151	1	(HARD SUSP)			
HO23-28-151	1	(NDR. SUSP) (SPORT SUSP)			
28-102	2	BUSH,STABILIZER-RR			
0113-28-156	2	(HARD SUSP)			
HO23-28-156	2	(NDR. SUSP) (SPORT SUSP)			
28-155	2	PLATE,STABILIZER-RR			
FB01-28-155	2				
34-150B	1	LINK(R),CONTRDL			
GA2A-34-170A	1				
34-150Z	1	LINK(L),CONTRDL			
GA2A-34-150A	1				



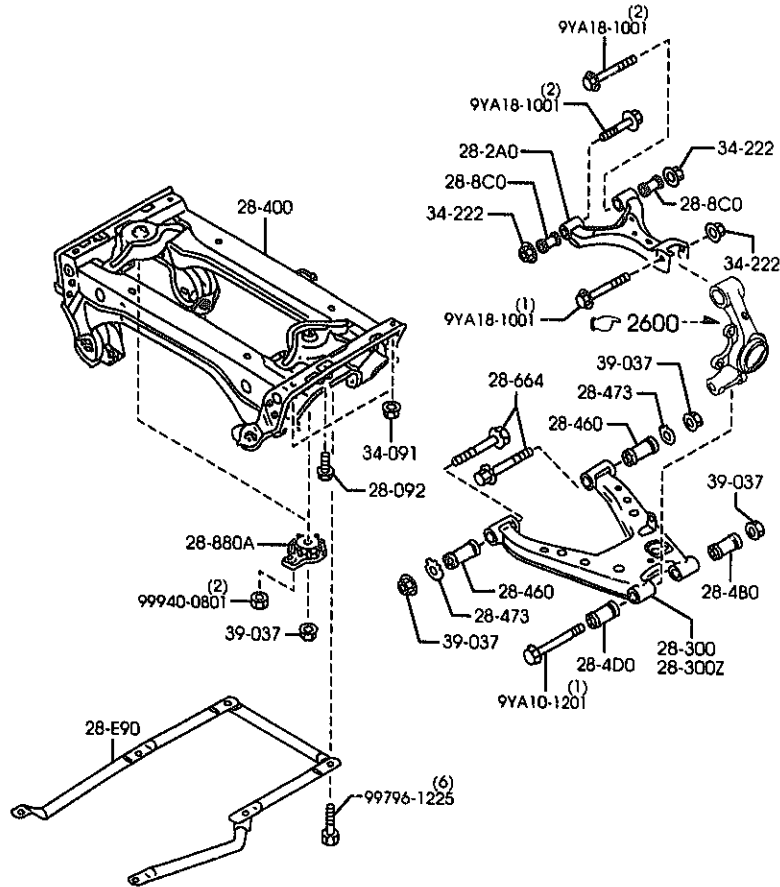
AUNA07

(1N04090)

CAT. AUNA07-05

2000-01

2830A REAR LOWER ARMS & SUB FRAME



2830A -1 REAR LOWER ARMS & SUB FRAME

PART NO.	QTY	MODEL/RESTRICTION	MODEL/RESTRICTION	MODEL/RESTRICTION	FROM-TO
28-E90		BAR,CROSS-REAR			
NC10-28-E90	1				
28-092		BOLT,CONTROL LINK			
NA01-28-092	2				
28-2A0		ARM,UPPER-REAR			
NC10-28-C10	2				
28-300		ARM(R),LOWER-REAR			
NC10-28-310	1				
28-300Z		ARM(L),LOWER-REAR			
NC10-28-360	1				
28-4B0		BUSHING,RUBBER-LOWER ARM			
NA01-28-4B0	2				
28-4D0		BUSHING,RUBBER-LOWER ARM			
NA01-28-4D0	2				
28-400		MEMBER,CROSS			
NC10-28-800C	1				
28-460		BUSHING,LOWER ARM			
NA01-28-460	4				
28-473		PLATE,CAM-SUB FRAME			
NA80-28-473A	4				
28-664		BOLT,ADJUST			
NA80-28-662C	4				
28-8C0		BUSHING,RUBBER			
NA01-28-8C0C	4				
28-880A		WASHER,STOP			
NA01-28-886C	2				
34-091		NUT			
FB01-34-091	4				

-8212

8212 NB553*-107693

AUNA07

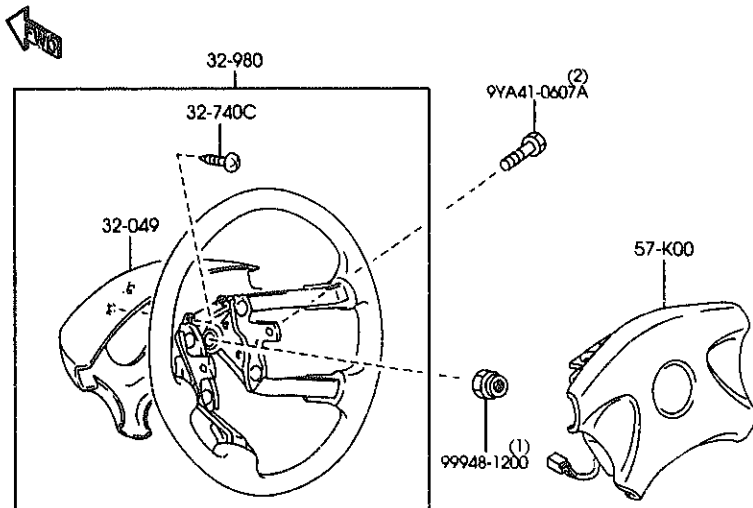
(1N04100)

CAT. AUNA07-05

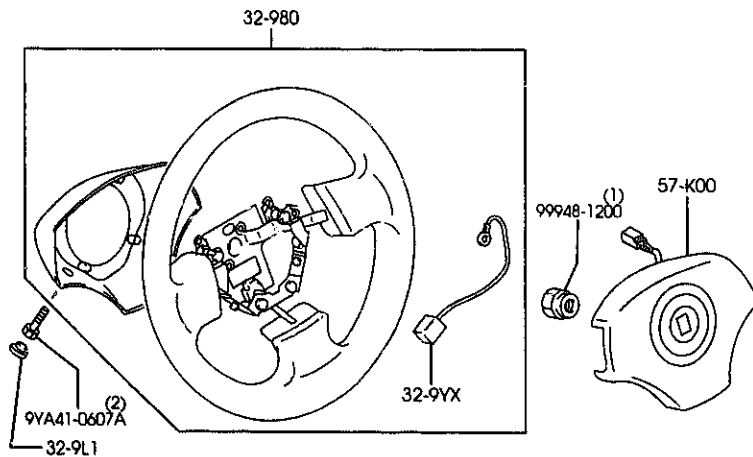
2000-01

3200A STEERING WHEEL

(URETHANE)



(LEATHER)
(WOOD)



AUNA07

(1N13000)

3200A -1 # STEERING WHEEL

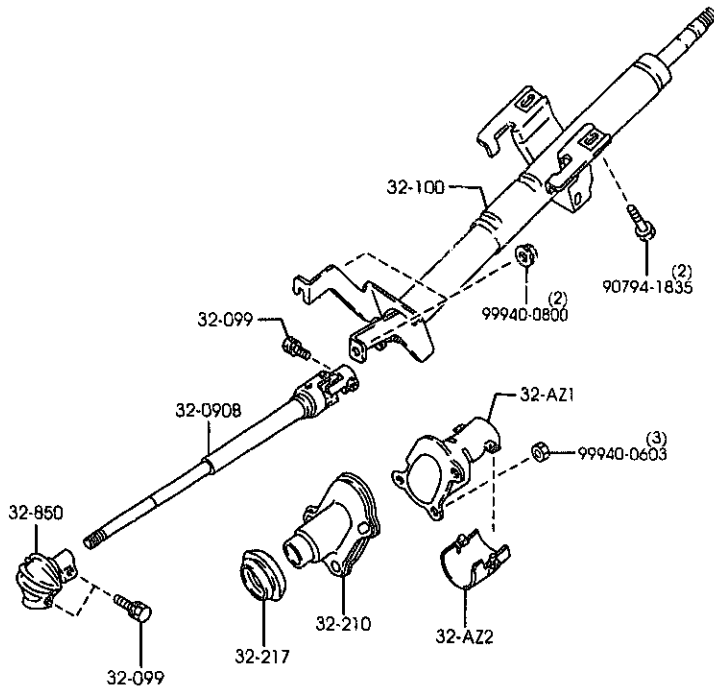
PART NO.	QTY	MODEL/RESTRICTION	MODEL/RESTRICTION	MODEL/RESTRICTION	FROM-TO
32-049		COVER, WHEEL CORE			
GE7T-32-049	1	(URETHANE WHEEL)			
32-740C		PARTS SET, ST. WHEEL			
GE7T-32-750	1	(URETHANE WHEEL)			
32-9L1		CAP			
BC1D-32-9L1	2	(LEATHER WHEEL 'TYPE-B')			
		(LEATHER WHEEL 'TYPE-A')			
		(WOOD WHEEL-A TYPE)			
32-9YX		HARNES, ST. WHEEL BOSS			
NC10-32-9YX	1	(LEATHER WHEEL 'TYPE-B')			
		(LEATHER WHEEL 'TYPE-A')			
		(WOOD WHEEL-A TYPE)			
32-980		BOSS, STEERING WHEEL			
XNC35-32-980	1	(WOOD WHEEL-A TYPE)			
ND65-32-980	1	(LEATHER WHEEL 'TYPE-A')			
NC10-32-980A	1	(LEATHER WHEEL 'TYPE-B')			-8410
AN(NC10-32-980C)					
GE8K-32-980A	1	(URETHANE WHEEL)			-8615
AN(GE8K-32-980B)					
NC10-32-980C	1	(LEATHER WHEEL 'TYPE-B')			8410-
GE8K-32-980B	1	(URETHANE WHEEL)			8615-
57-K00		MODULE, AIR BAG			
NC10-57-K00B	1	(URETHANE WHEEL)			
00	INT-	NB0 NB1 NB2 NB6 NB7 BLACK			
NC13-57-K00	1	(LEATHER WHEEL 'TYPE-B')			
		(LEATHER WHEEL 'TYPE-A')			
		(WOOD WHEEL-A TYPE)			
8410 NB353*-115009					
8615 NB353*-120314					

CAT. AUNA07-05

2000-01

3210A STEERING COLUMN & SHAFTS

3210A -1 * STEERING COLUMN & SHAFTS



PART NO.	QTY	MODEL/RESTRICTION	MODEL/RESTRICTION	MODEL/RESTRICTION	FROM-TO
32-AZ1		COVER, JOINT-UPPER			
NA75-32-AZ1	1				
32-AZ2		COVER, JOINT-LOWER			
NA01-32-AZ2A	1				
32-090B		SHAFT, INTERMED.			
NC10-32-090C AN(NC10-32-090D)	1	(W/POWER STEERING)			-8413
NC11-32-090C AN(NC11-32-090D)	1	(W/O POWER STEERING)			-8601
NC10-32-090D	1	(W/POWER STEERING)			8413-
NC11-32-090D	1	(W/O POWER STEERING)			8601-
32-099		BOLT, SHAFT			
B455-32-099A	3				
32-100		SHAFT, ENGY. ABSORBER			
NC10-32-100D	1				
32-210		COVER, DUST			
NC10-32-210	1				
32-217		GROMMET			
NA01-32-217	1				
32-850		JOINT, STEERING			
NC10-32-850	1				

8413 NB353*-115160
8601 NB353*-119466

AUNA07

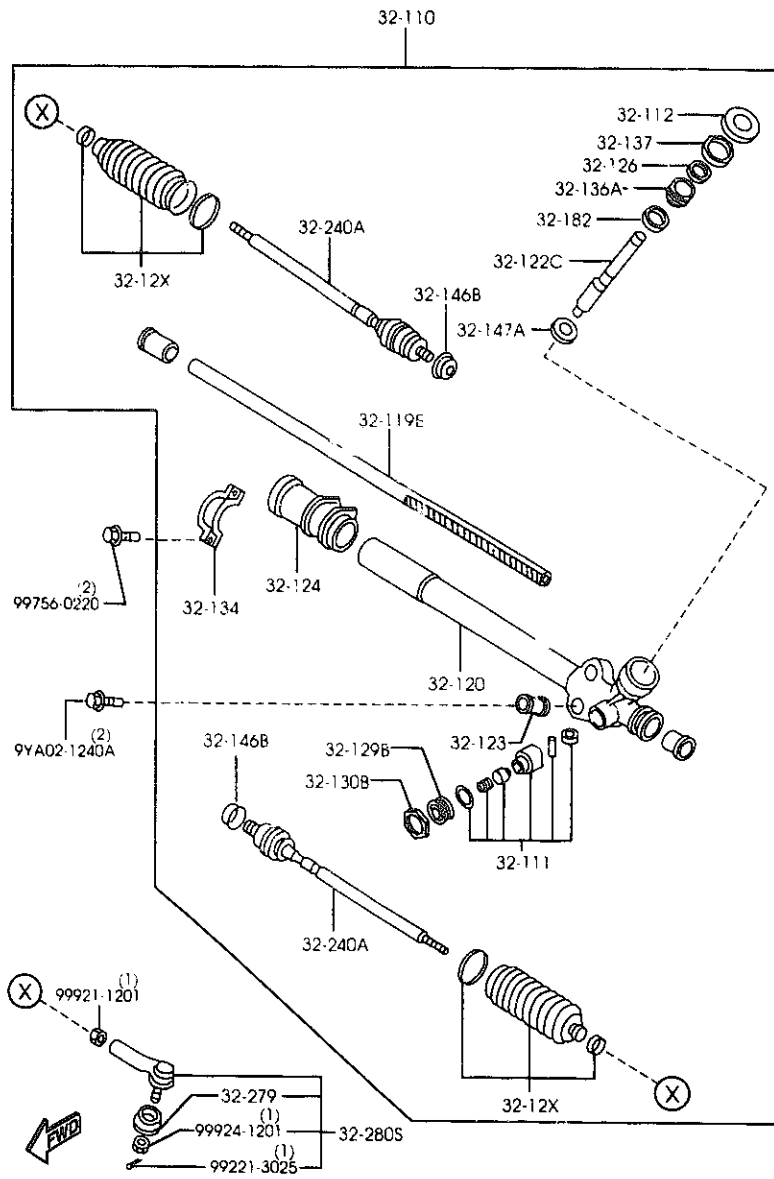
(1N04120)

CAT. AUNA07-05

2000-01

1-M12

3220AA STEERING GEAR
(W/D POWER STEERING)



AUNA07

(1N08030)

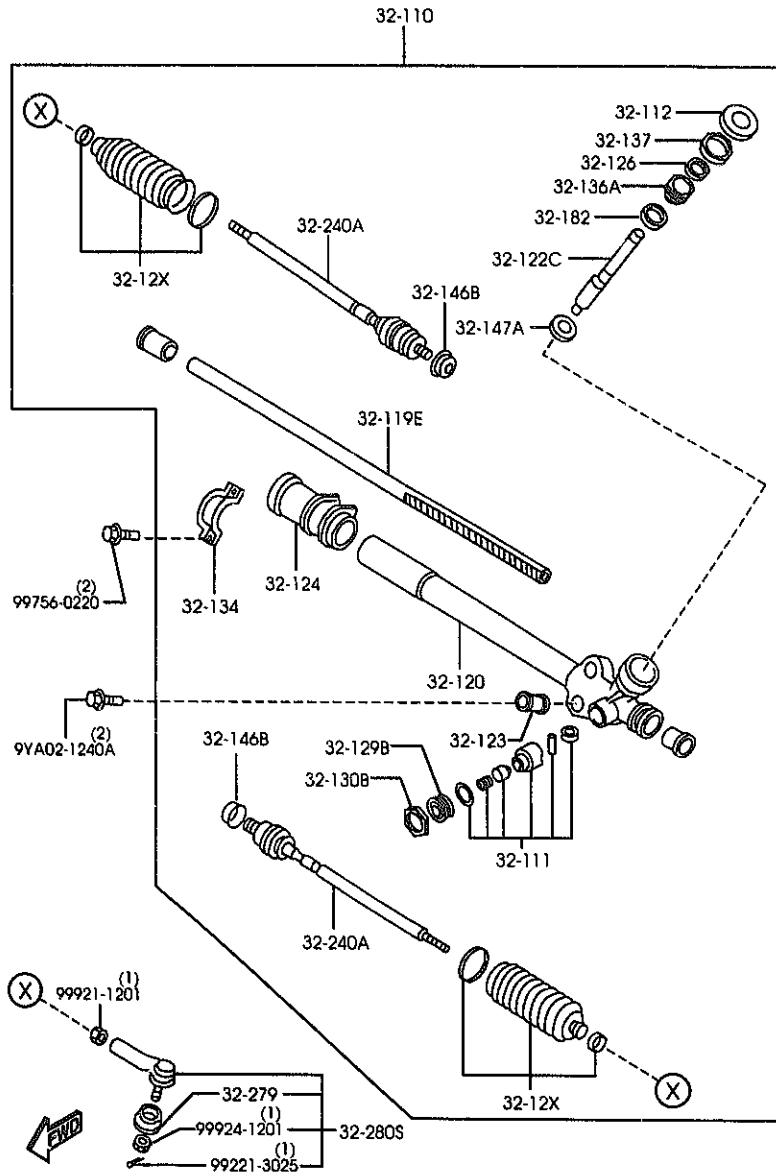
3220AA-1 STEERING GEAR
(W/D POWER STEERING)

PART NO.	QTY	MODEL/RESTRICTION	MODEL/RESTRICTION	MODEL/RESTRICTION	FROM-TO
32-110		GEAR, STEERING			
NC11-32-110A	1				
32-111		YOKE, SUPPORT			
GJ21-32-111	1				
32-112		COVER, DUST			
NC11-32-112	1				
32-119E		RACK, STEERING GEAR			
NA01-32-119	1				
32-12X		BOOT SET, ST. GEAR			
NA01-32-12X	2				
32-120		HOUSING, GEAR			
NC11-32-120	1				
32-122C		PINION, STEERING GEAR			
NA01-32-122	1				
32-123		RUBBER, MOUNTING			
NC10-32-123	2				
32-124		RUBBER, MOUNTING			
NC11-32-124	1				
32-126		SEAL, SHAFT			
GJ21-32-126	1				
32-129B		PLUG, PINION			
HE01-32-129	1				
32-130B		NUT, LOCK			
S083-32-137	1				
32-134		PLATE, CLAMP			
NC10-32-134	1				
32-136A		COVER, REAR			
GJ21-32-136	1				

CAT. AUNA07-05

2000-01

3220AA STEERING GEAR
(W/O POWER STEERING)



AUNA07

(1N08030)

3220AA-2 * STEERING GEAR
(W/D POWER STEERING)

PART NO.	QTY	MODEL/RESTRICTION	MODEL/RESTRICTION	MODEL/RESTRICTION	FROM TO
32-137		NUT, LOCK			
6J21-32-137	1				
32-146B		WASHER			
HA14-32-146	2				
32-147A		BEARING, PINION			
6030-32-147	1				
32-182		BEARING			
0259-32-182	1				
32-240A		JOINT, BALL			
NA01-32-240	2				
32-279		SEAL, DUST-BALL JOINT			
B455-32-279	2				
32-280S		JOINT SET, BALL			
BAN1-32-280	2				

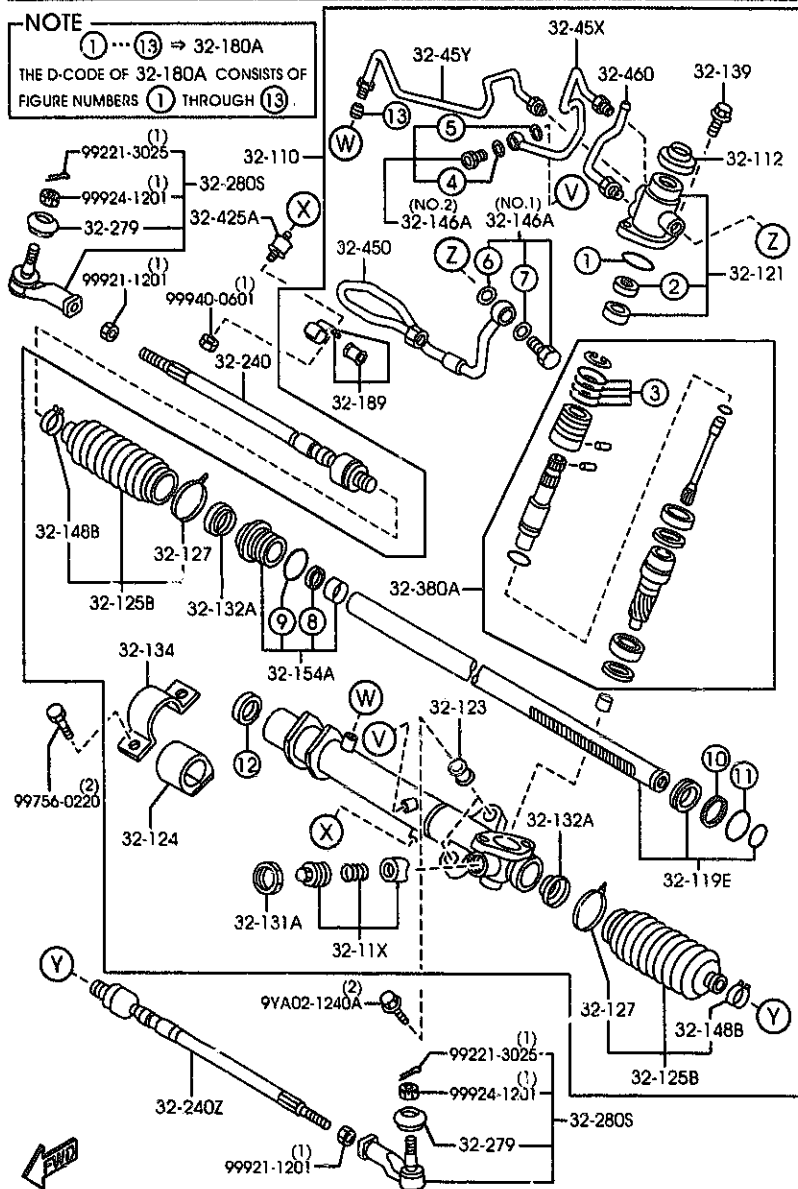
CAT. AUNA07-05

2000-01

3220AR STEERING GEAR
(W/POWER STEERING)

NOTE

①...⑬ ⇒ 32-180A
THE D-CODE OF 32-180A CONSISTS OF
FIGURE NUMBERS ① THROUGH ⑬



AUNA07

(1N04130)

3220AB-1 STEERING GEAR
(W/POWER STEERING)

PART NO.	QTY	MODEL/RESTRICTION	MODEL/RESTRICTION	MODEL/RESTRICTION	FROM-TO
32-11X		YOKE SET, SUPPORT-ST. GEAR			-8603
NC10-32-11X A (NC10-32-11XA)	1				8603-
NC10-32-11XA	1				
32-110		GEAR, STEERING			-7C03
NC10-32-110E AN (NC10-32-110F)	1				7C03-9208
NC10-32-110F AN (NC10-32-110G)	1				9208-
NC10-32-110G	1				
32-112		COVER, DUST			
NC10-32-112	1				
32-119E		RACK, STEERING GEAR			
NC10-32-119	1				
32-121		HOUSING, VALVE-ST. GEAR			
NC10-32-126	1				
32-123		RUBBER, MOUNTING			
NC10-32-123	2				
32-124		RUBBER, MOUNTING			
NC10-32-124	1				
32-125B		BOOT, RACK			
NC10-32-125	2				
32-127		CLIP, WIRE			
B456-32-127	2				
32-131A		NUT, LOCK-RACK			
B456-32-131	1				
32-132A		WASHER			
B456-32-132	2				
32-134		PLATE, CLAMP			
NC10-32-134	1				
<p>7C03 NB353*-10063 8603 NB353*-11963 9208 NB353*-130784</p>					

CAT. AUNA07-05

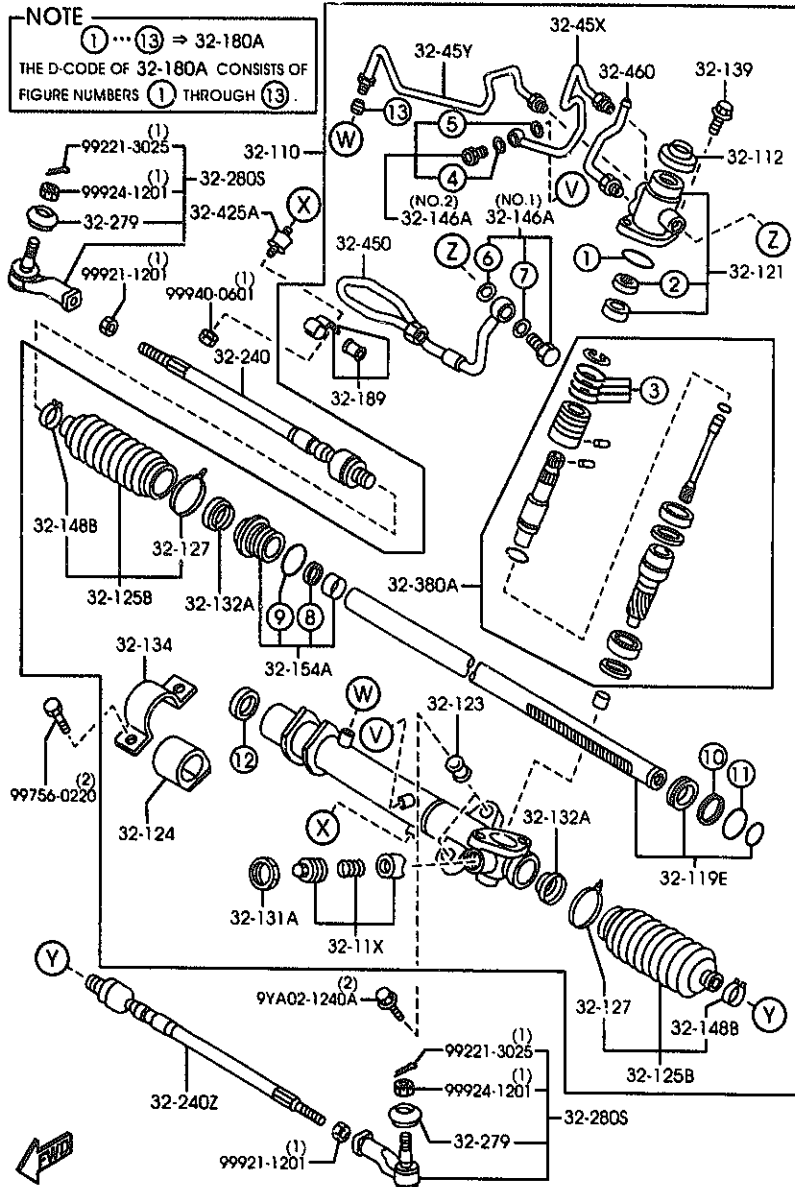
2000-01

3220AB STEERING GEAR
(W/POWER STEERING)

3220AB-3 * STEERING GEAR
(W/POWER STEERING)

NOTE

①...⑬ ⇒ 32-180A
THE D-CODE OF 32-180A CONSISTS OF
FIGURE NUMBERS ① THROUGH ⑬.



AUNA07

(1N04130)

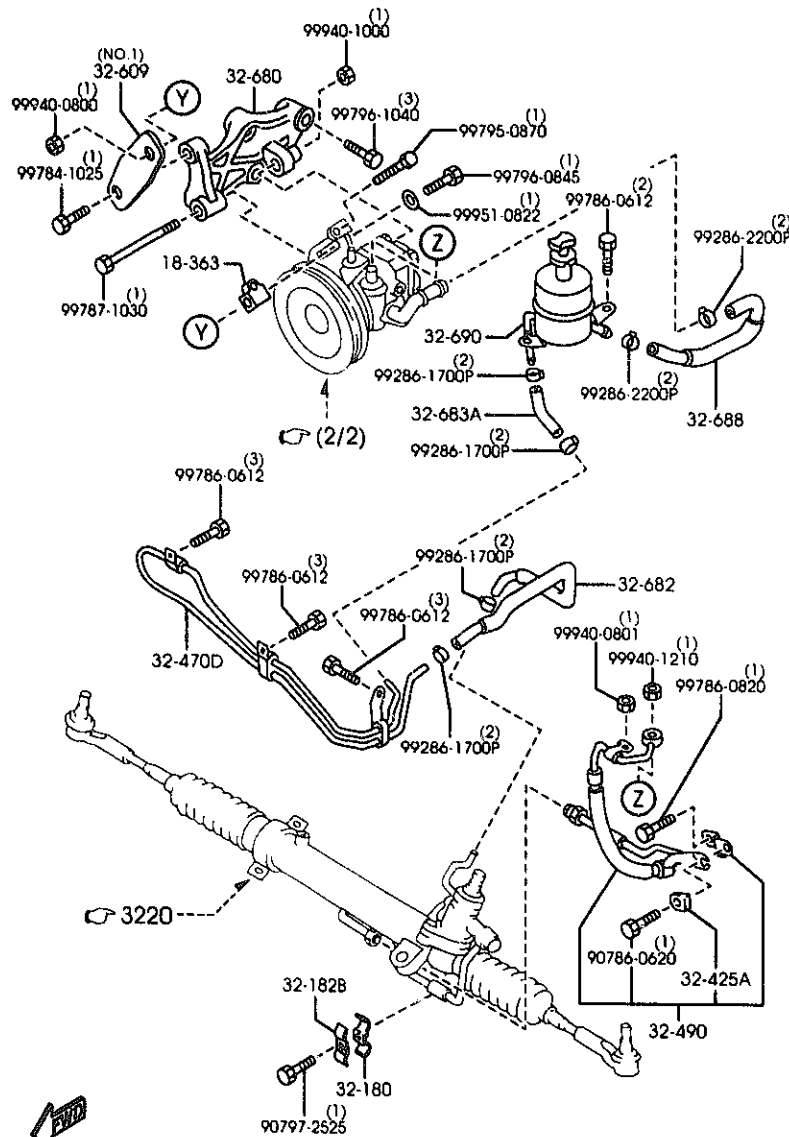
PART NO.	QTY	MODEL/RESTRICTION	MODEL/RESTRICTION	MODEL/RESTRICTION	FROM-TO
32-45V	1	PIPE(L),RETURN-PRESSURE			
NC10-32-45Y	1				
32-450	1	PIPE,PRESSURE			
NC10-32-450	1				
32-460	1	PIPE NO.2,PRESSURE			
NC10-32-460	1				

CAT. AUNA07-05

2000-01

3240A POWER STEERING SYSTEM
(NT)

(1/2)



AUNA07

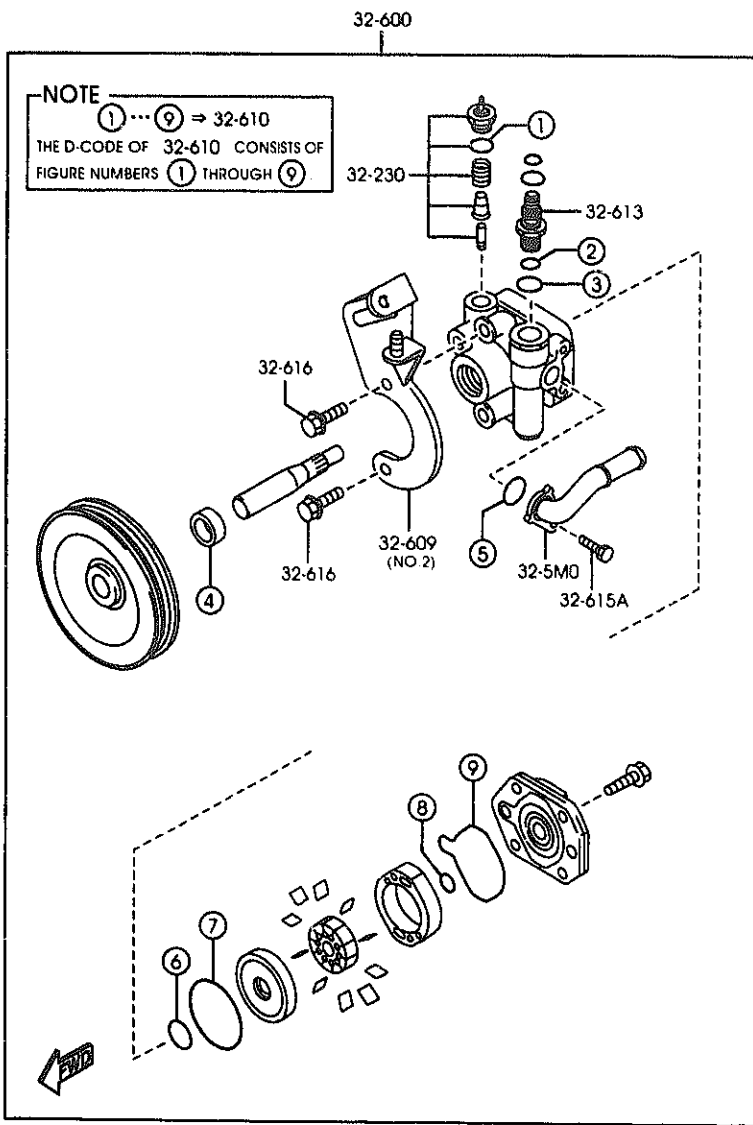
(1N04141)

3240A -1 POWER STEERING SYSTEM
(NT)

PART NO.	QTY	MODEL/RESTRICTION	MODEL/RESTRICTION	MODEL/RESTRICTION	FRON-TO
18-363		SPACER, STRAP			
FP02-18-363	1				
32-180		CLIP, PIPE-P.S.			
UC87-32-18X	1				
32-182B		CLIP, PIPE-P.S.			
UC87-32-182	1				
32-230		SENSOR, STEERING PRES SURE			
B456-32-230C	1				
32-425A		RUBBER, MOUNTING MOLTEN			
8C1D-32-425	1				
32-470D		PIPE, COOLING			
NC10-32-470A	1				
32-490		HOSE, PRESSURE			
NC10-32-490H AN(NC10-32-490J)	1				-8201
NC10-32-490J	1				8201-
32-5M0		PIPE, SUCTION			
N002-32-5M0A	1				
32-600		PUMP, VANE			
NC10-32-600B	1				
32-609		BRACKET, VANE PUMP			
NC10-32-609	1	(ILLUST. NO.1)			
NC11-32-609A	1	(ILLUST. NO.2)			
32-610		SEAL KIT, VANE PUMP			
B456-32-610A	1				
32-613		NIPPLE, VANE PUMP			
B456-32-613A	1				
32-615A		BOLT			
8201 NB353H-106606					

CAT. AUNA07-05

2000-01

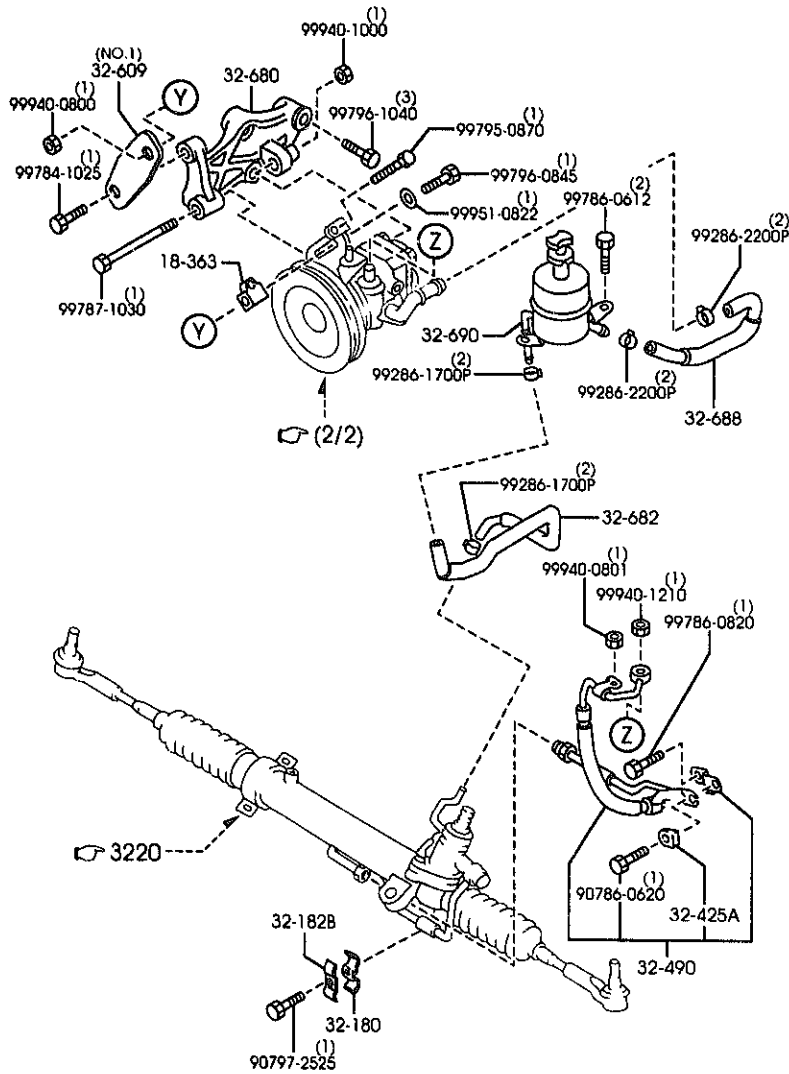


PART NO.	QTY	MODEL/RESTRICTION	MODEL/RESTRICTION	MODEL/RESTRICTION	FROM-TO
CONT'D					
B456-32-615A	1				
-----+----- 32-616 -----+-----		BOLT,VANE PUMP			
B456-32-616	2				
-----+----- 32-680 -----+-----		BRACKET,VANE PUMP			
NA02-32-680	1				
-----+----- 32-682 -----+-----		HOSE,RETURN			
NC10-32-682	1				
-----+----- 32-683A -----+-----		HOSE,RETURN			
NC10-32-683	1				
-----+----- 32-688 -----+-----		HOSE,SUCTION			
NC10-32-688	1				
-----+----- 32-690 -----+-----		TANK,VANE PUMP			
NC10-32-690B A (NC10-32-690C)	1				-0A01
NC10-32-690C	1				8A01-

8A01 NB353R-122764

3240B POWER STEERING SYSTEM
(AT)

(1/2)



3240B -1 POWER STEERING SYSTEM
(AT)

PART NO.	QTY	MODEL/RESTRICTION	MODEL/RESTRICTION	MODEL/RESTRICTION	FROM-TO
18-363		SPACER, STRAP			
FP02-18-363	1				
32-180		CLIP, PIPE-P. S.			
UC87-32-180	1				
32-182B		CLIP, PIPE-P. S.			
UC87-32-182	1				
32-230		SENSOR, STEERING PRES SURE			
B456-32-230C	1				
32-425A		RUBBER, MOUNTING MOLTEN			
BC10-32-425	1				
32-490		HOSE, PRESSURE			
NC10-32-490H AN(NC10-32-490J)	1				-8201
NC10-32-490J	1				8201-
32-5M0		PIPE, SUCTION			
N002-32-5M0A	1				
32-600		PUMP, VANE			
NC10-32-600B	1				
32-609		BRACKET, VANE PUMP			
NC10-32-609	1	(ILLUST. NO. 1)			
NC11-32-609A	1	(ILLUST. NO. 2)			
32-610		SEAL KIT, VANE PUMP			
B456-32-610A	1				
32-613		NIPPLE, VANE PUMP			
B456-32-613A	1				
32-615A		BOLT			
B456-32-615A	1				
32-616		BOLT, VANE PUMP			

8201 NB353R-106606

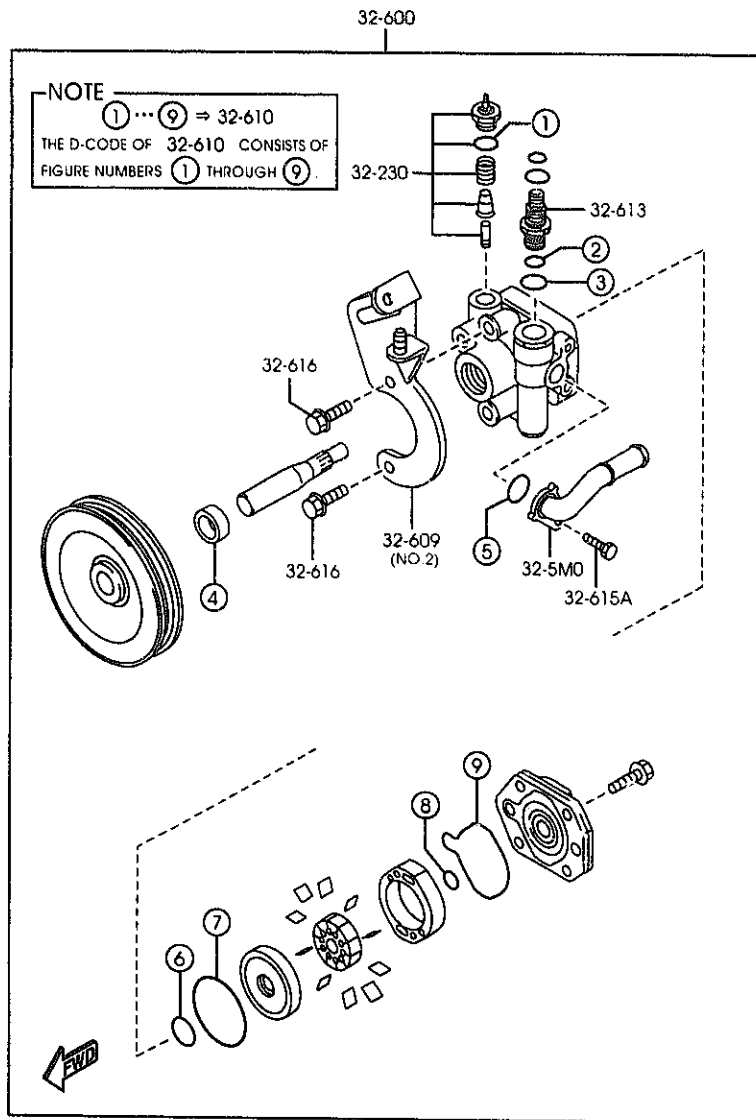
AUNA07

(1N08041)

CAT. AUNA07-05

2000-01

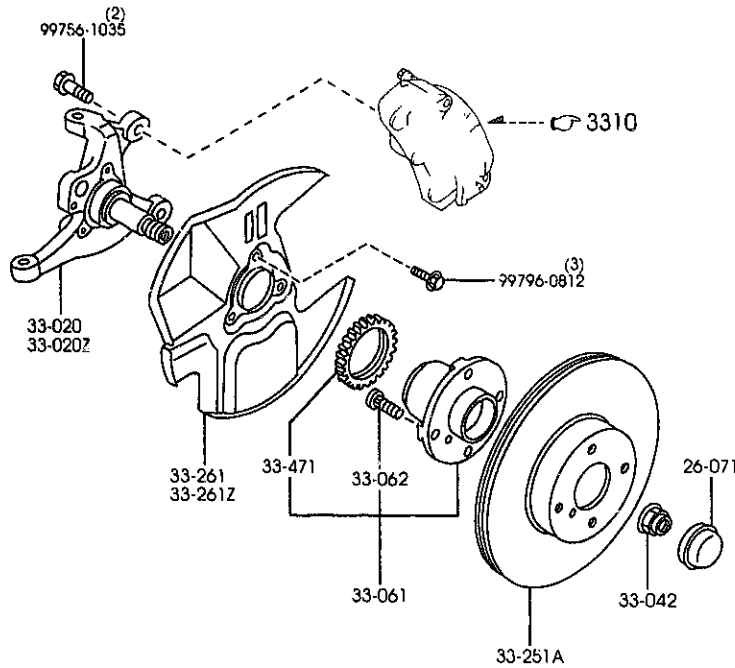
1-K13



PART NO.	QTY	MODEL/RESTRICTION	MODEL/RESTRICTION	MODEL/RESTRICTION	FROM-TO
CONT'D					
B456-32-616	2				
32-680		BRACKET, VANE PUMP			
NA02-32-680	1				
32-682		HOSE, RETURN			
NC13-32-682A	1				
32-688		HOSE, SUCTION			
NC10-32-688	1				
32-690		TANK, VANE PUMP			
NC10-32-690B A (NC10-32-690C)	1				-8A01
NC10-32-690C	1				8A01-
8A01 NB353*-122764					

3300A FRONT AXLE

3300A -1 * FRONT AXLE



PART NO.	QTY	MODEL/RESTRICTION	MODEL/RESTRICTION	MODEL/RESTRICTION	FROM-TO
26-071 B455-26-071	2	CAP, HUB			
33-020 NC10-33-021 AN(NC10-33-021A)	1	KNUCKLE(R), STEERING (W/O A. LOCK BRAKE)			-7C01
NC14-33-021 AN(NC14-33-021A)	1	(W/A. LOCK BRAKE)			-7C01
NC10-33-021A	1	(W/O A. LOCK BRAKE)			7C01-
NC14-33-021A	1	(W/A. LOCK BRAKE)			7C01-
33-020Z NC10-33-031 AN(NC10-33-031A)	1	KNUCKLE(L), STEERING (W/O A. LOCK BRAKE)			-7C01
NC14-33-031 AN(NC14-33-031A)	1	(W/A. LOCK BRAKE)			-7C01
NC10-33-031A	1	(W/O A. LOCK BRAKE)			7C01-
NC14-33-031A	1	(W/A. LOCK BRAKE)			7C01-
33-042 D06V-33-042	2	NUT W/WASHER			
33-061 NA01-33-04X NA23-33-04XA	2	HUB, WHEEL (W/O A. LOCK BRAKE) (W/A. LOCK BRAKE)			
33-062 B455-33-062	8	BOLT, HUB			
33-251A NA75-33-25XC	2	PLATE, DISC			
33-261 NA75-33-261	1	COVER(R), DUST			
33-261Z NA75-33-271	1	COVER(L), DUST			
33-471 NA23-33-471B	2	ROTOR, SENSOR-FRT A. B. (W/A. LOCK BRAKE)			
7C01 NB353*-100063					

AUNA07

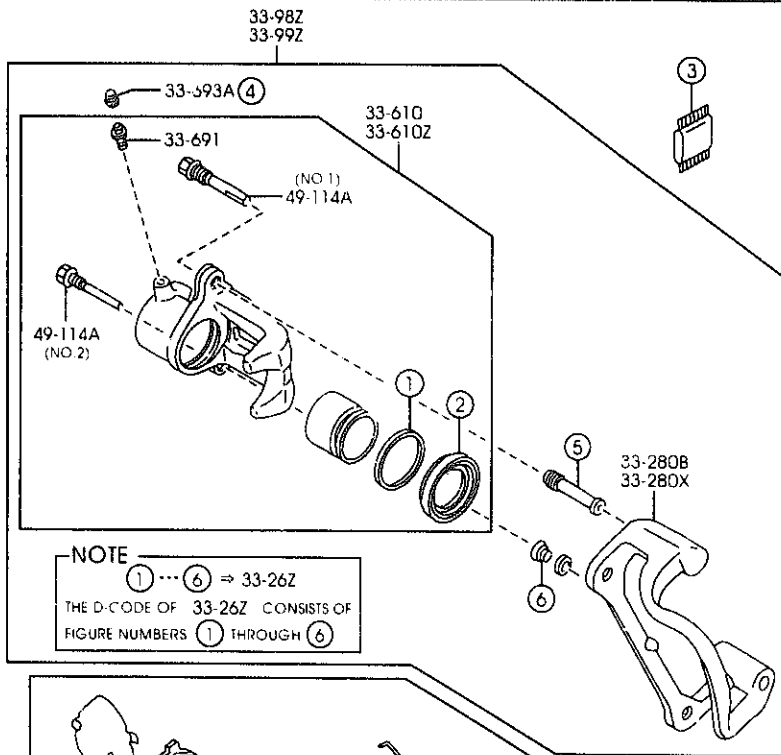
(1N04150)

CAT. AUNA07-05

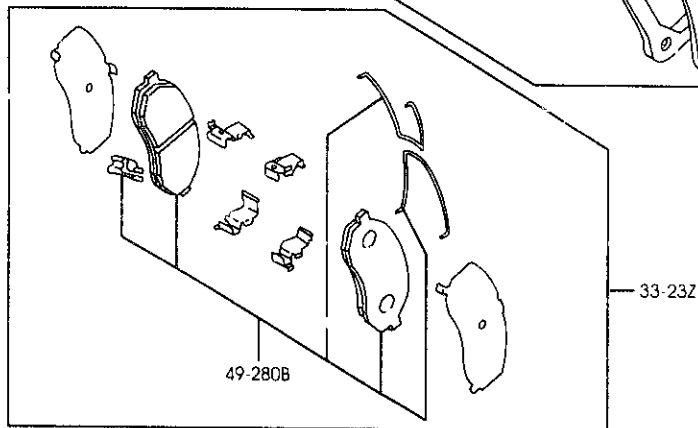
2000-01

3310A FRONT BRAKE MECHANISMS

3310A -1 * FRONT BRAKE MECHANISMS



NOTE
 ① --- ⑥ ⇒ 33-26Z
 THE D-CODE OF 33-26Z CONSISTS OF
 FIGURE NUMBERS ① THROUGH ⑥



THOUGH ILLUSTRATIONS OF D-CODE 33-23Z
 33-26Z AND 49-280B ARE FOR LEFT SIDE
 ONLY, QUANTITIES OF THESE D-CODES IN
 THE TEXT ARE FOR ONE VEHICLE.



AUNA07

(1N04160)

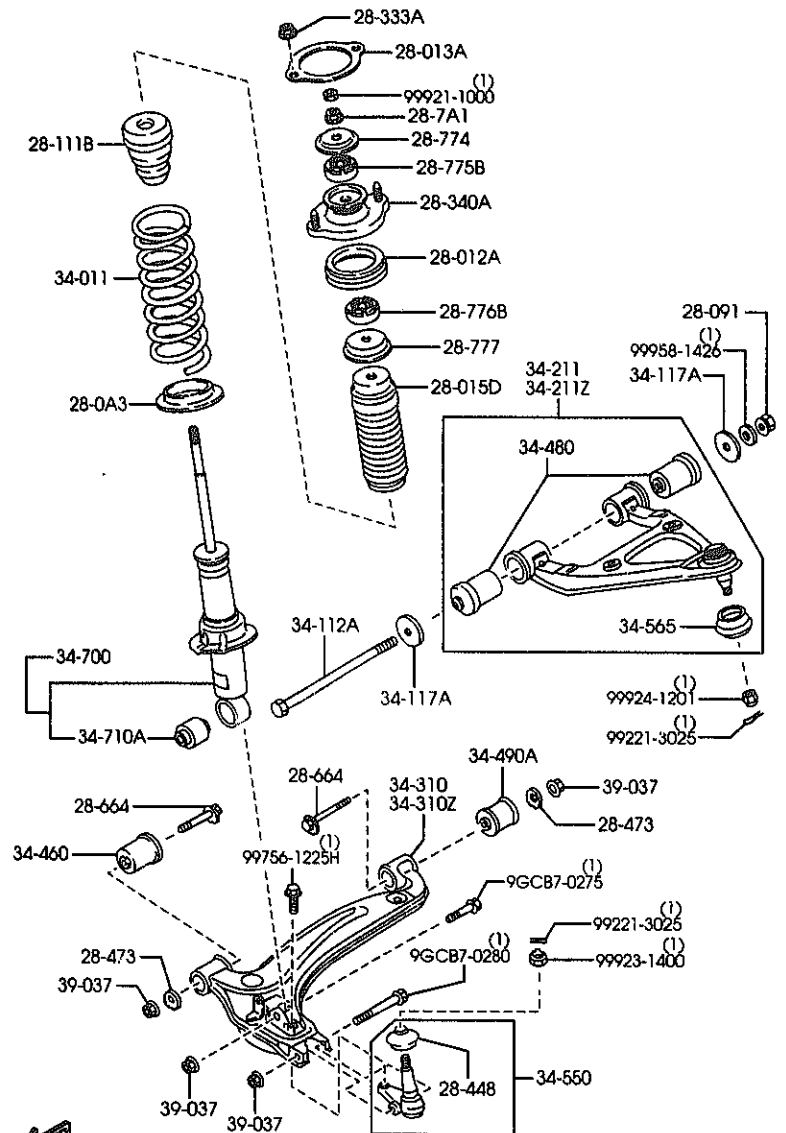
PART NO.	QTY	MODEL/RESTRICTION	MODFL./RESTRICTION	MODEL/RESTRICTION	FROM-TO
33-23Z	1	PAD SET,FRT CALIPER			-9120
NAY5-33-23ZA AN(NAY5-33-23ZB)	1				
NAY5-33-23ZB	1				9120-
33-26Z	1	SEAL & BOOT SET,CAL. -FRT			
NAY5-33-26Z	1				
33-280B	1	SUPPORT(R),MOUNTING			
NA75-33-281	1				
33-280X	1	SUPPORT(L),MOUNTING			
NA75-33-291	1				
33-610	1	BODY & PISTON(R),CAL IPER			
NA75-33-61X	1				
33-610Z	1	BODY & PISTON(L),CAL IPER			
NA75-33-71X	1				
33-691	2	SCREW,BLEEDER			
8001-33-691	2				
33-693A	2	CAP,BLEEDER SCREW			
0259-33-693	2				
33-98Z	1	CALIPER(R),PADLESS-F R			
NAZ5-33-98Z	1				
33-99Z	1	CALIPER(L),PADLESS-F R			
NAZ5-33-99Z	1				
49-114A	2	PIN,SLIDER			
8173-49-114	2	(ILLUST. NO.1)			
8239-49-114	2	(ILLUST. NO.2)			
49-280B	1	PAD SUR SET,FRT CALI PER			-9120
NAY5-33-28Z AN(NAY5-33-28ZA)	1				
NAY5-33-28ZA	1				9120-

9120 NB353*-12F748

CAT. AUNA07-05

2000-01

3400A FRONT SUSPENSION MECHANISMS



AUNA07

(1N11570)

3400A -1 FRONT SUSPENSION MECHANISMS

PART NO.	QTY	MODEL/RESTRICTION	MODEL/RESTRICTION	MODEL/RESTRICTION	FROM-TO
28-0A3		RUBBER, SPRING SHEET			
NC10-28-0A3 ANC(NC10-28-0A3A)	2				-8801
NC10-28-0A3A	2				8801-
28-012A		SHEET, RUBBER			
NC10-28-012B	2				
28-013A		SHEET, RUBBER			
G030-28-013A	2				
28-015D		BOOT, DUST			
NC10-28-015A	2				
28-091		NUT			
FB01-28-091A	2				
28-111B		STOPPER, BUMP			
NC10-34-111	2				
28-333A		NUT, FLANGE			
H001-28-333	4				
28-340A		SHEET, SPRING-UPPER			
NC10-28-340B	2				
28-448		SEAL, DUST-BALL JOINT			
H266-28-448	2				
28-473		PLATE, CAM-SUB FRAME			
HAB0-28-473A	4				
28-664		BOLT, ADJUST			
HAB0-28-662C	4				
28-7A1		NUT, FLANGE-RR DAMPER			
D061-28-7A1	2				
28-774		RETAINER, REAR DAMPER			
NC10-28-774	2				

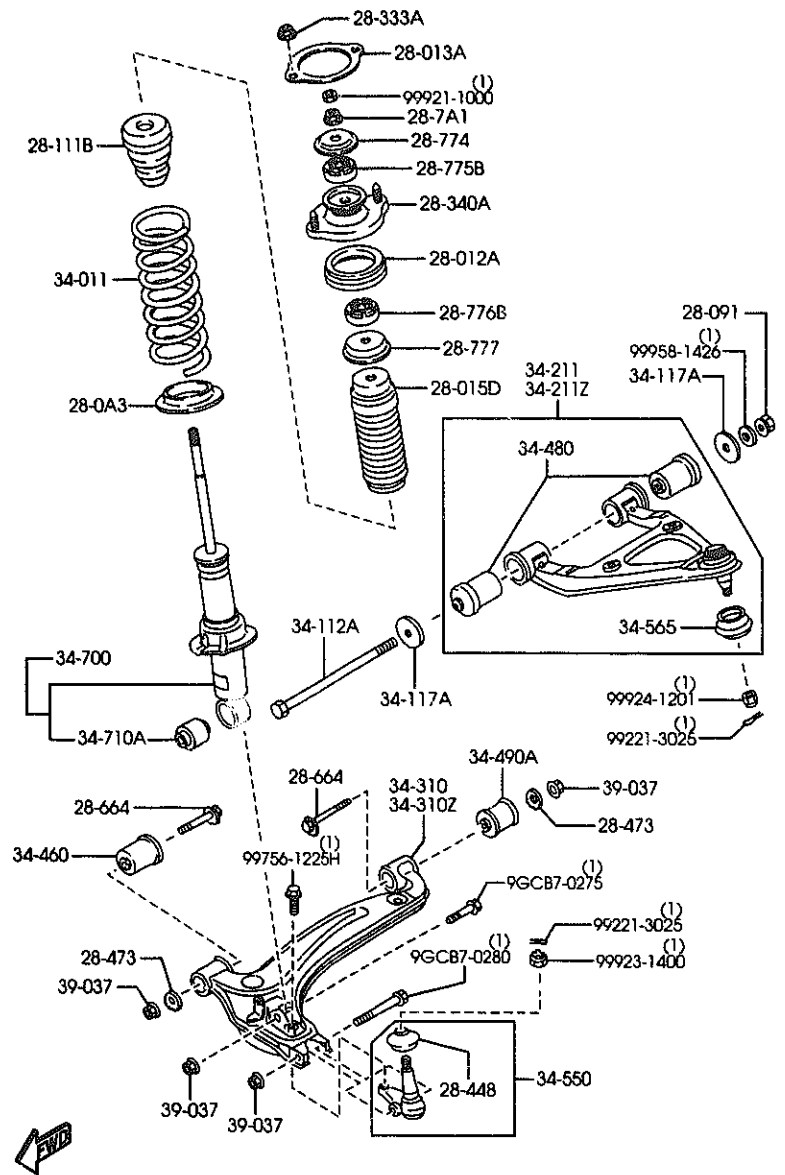
8801 NB553*-121854

CAT. AUNA07-05

2000-01

3400A FRONT SUSPENSION MECHANISMS

3400A -2 FRONT SUSPENSION MECHANISMS



PART NO.	QTY	MODEL/RESTRICTION	MODEL/RESTRICTION	MODEL/RESTRICTION	FROM-TO
28-775B		BUSH, REAR DAMPER-UPPER			
NC10-28-775	2				
28-776B		BUSH, REAR DAMPER-LOWER			
NC10-28-776	2				
28-777		WASHER			
NC10-28-777	2				
34-011		SPRING, COIL-FRONT			
NC10-34-011B	2	(NOR. SUSP) (SPORT SUSP)			
NC12-34-011B	2	(HARD SUSP) (W/A. LOCK BRAKE)			
34-112A		BOLT			
NA01-34-112	2				
34-117A		WASHER			
NA01-34-117A	4				
34-211		ARM(R), UPPER			
NC10-34-200	1	(W/O A. LOCK BRAKE)			
NC14-34-200 AN(NC14-34-200A)	1	(W/A. LOCK BRAKE)			-7C01
NC14-34-200A	1	(W/A. LOCK BRAKE)			7C01-
34-211Z		ARM(L), UPPER			
NC10-34-200	1	(W/O A. LOCK BRAKE)			
NC14-34-250 AN(NC14-34-250A)	1	(W/A. LOCK BRAKE)			-7C01
NC14-34-250A	1	(W/A. LOCK BRAKE)			7C01-
34-310		ARM(R), LOWER			
NC10-34-310C	1				
34-310Z		ARM(L), LOWER			
NC10-34-360C	1				
34-460		BUSH, RUBBER-LWR ARM			
NA01-34-460A	2				

7C01 NB353*-100063

AUNA07

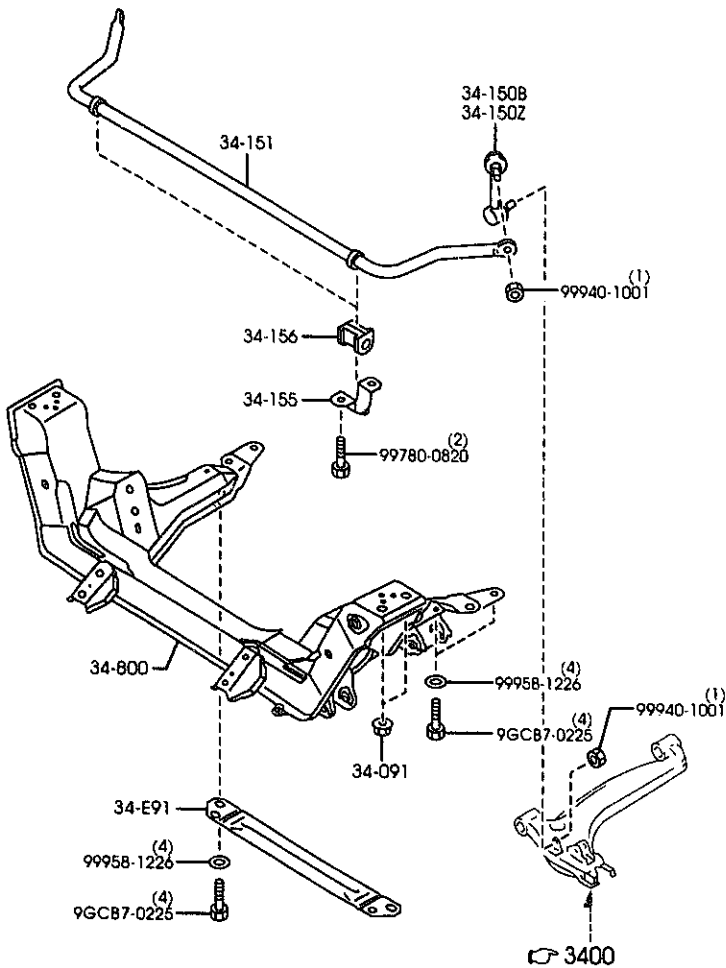
(1N11570)

CAT. AUNA07-05

2000-01

3410A CROSSMEMBER & STABILIZER

3410A -1 * CROSSMEMBER & STABILIZER



PART NO.	QTY	MODEL/RESTRICTION	MODEL/RESTRICTION	MODEL/RESTRICTION	FROM-TO
34-E91		BAR,FRONT CROSS			
NC10-34-E91A	1				
34-091		NUT			
FB01-34-091	4				-8212
AN(FB01-34-091A)					
FB01-34-091A	4				8212-
34-150B		LINK(R),CONTROL			
NC10-34-150	1				
34-150Z		LINK(L),CONTROL			
NC10-34-170	1				
34-151		STABILIZER,FRONT			
NC10-34-151A	1				
34-155		PLATE,STABILIZER			
FB01-34-155	2				
34-156		BUSH,STABILIZER-FRT			
NC10-34-156	2				
34-800		MEMBER,CROSS			
NC10-34-800A	1				-8101
AN(NC10-34-800B)					
NC10-34-800B	1				8101-

8101 NB553*-102707
8212 NB553*-107693



AUNA07

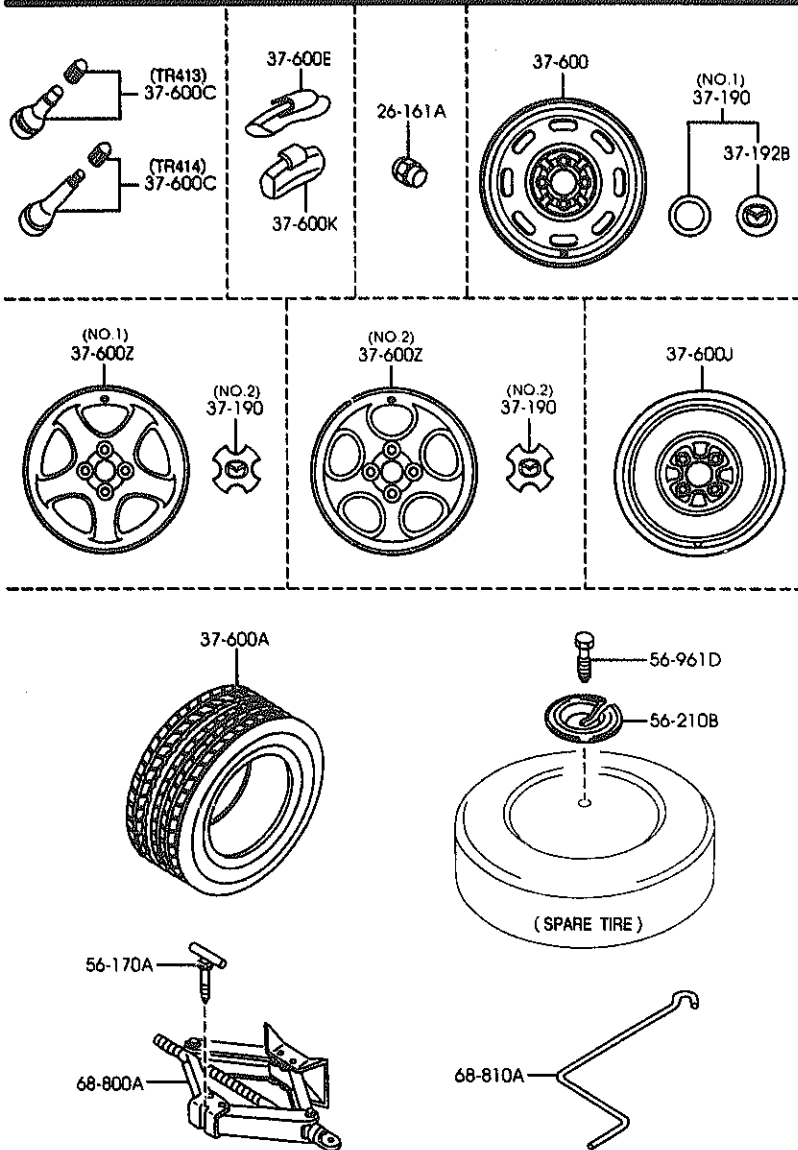
(1N04180)

CAT. AUNA07-05

2000-01

3700A TIRES & JACK

3700A -1 TIRES & JACK



PART NO.	QTY	MODEL/RESTRICTION	MODEL/RESTRICTION	MODEL/RESTRICTION	FROM-TO
26-161A		NUT,HUB			
B002-37-160	16	PLATED			
37-190		CAP,CENTER			
B21V-37-190	4	(ILLUST. NO.1) (FOR STEEL WHEEL)			
NC10-37-190	4	(ILLUST. NO.2) (FOR ALUMI WHEEL) ((INT)>(5-SP)) (AT)			
#N053-37-190	4	(ILLUST. NO.2) (FOR ALUMI WHEEL) (L.S. DIFF) ((INT)>(6-SP))			
37-192B		EMBLEM,CENTER			
G14H-57-192	4				
37-600		WHEEL,DISC-STEEL			
9965B-95540	4	5.5JX14 P=100/O=45			
37-600A		TIRE			
90620-47614	1	T115/70D14			
90621-55695	4	195/50R15			
90628-36684	4	P185/60R14			
90629-26684	4	185/60R14			
37-600C		VALVE,AIR			
99636-04130	1	TR413			
99636-04140	4	TR414			
37-600E		WEIGHT,DISC WHEEL-ST			
99655-30005	4	EEL 50			-9701
A (99657-20005)	4				
99655-30010	4	100			-9701
A (99657-20010)	4				
99655-30015	4	150			-9701
A (99657-20015)	4				
9701 NB353H-138751					

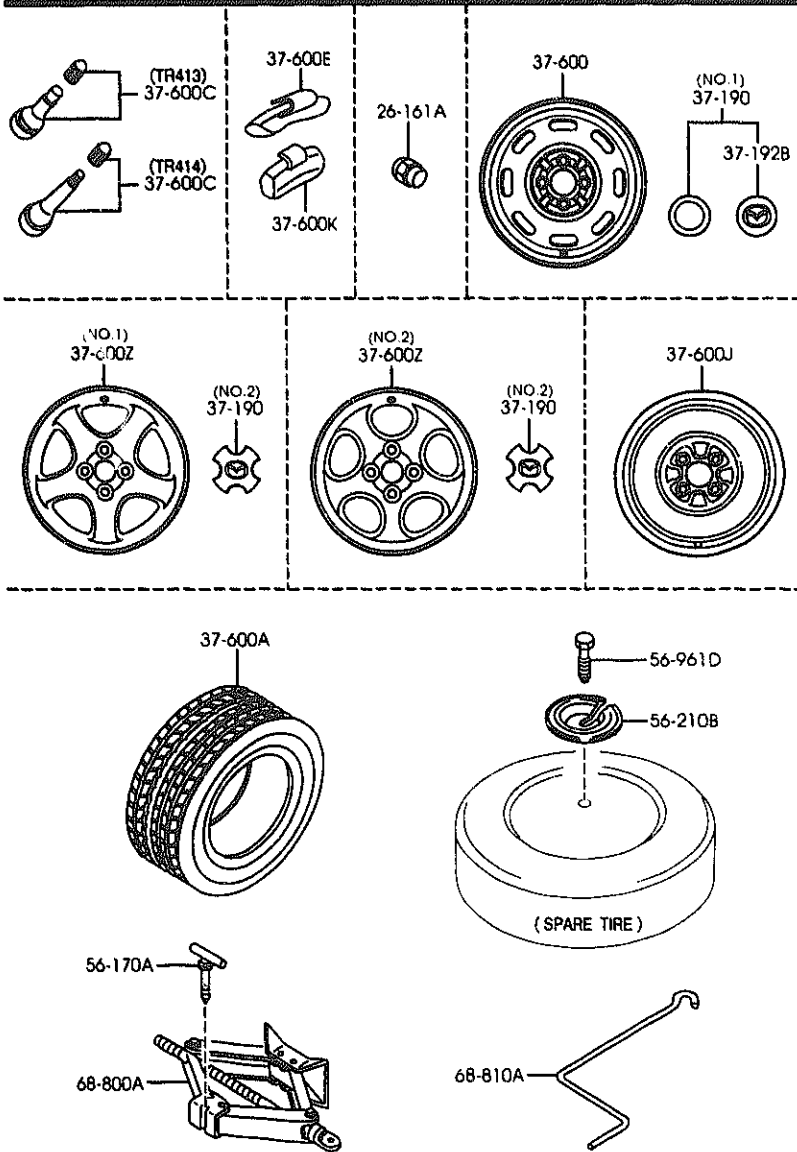
AUNA07

(1N05870)

CAT. AUNA07-05

2000-01

3700A TIRES & JACK



3700A -2 TIRES & JACK

PART NO.	QTY	MODEL/RESTRICTION	MODEL/RESTRICTION	MODEL/RESTRICTION	FROM-TO
CONT'D					
99655-30020	200				-9701
A (99657-20020)	4				-9701
99655-30025	250				-9701
A (99657-20025)	4				-9701
99655-30030	300				-9701
A (99657-20030)	4				-9701
99655-30035	350				-9701
A (99657-20035)	4				-9701
99655-30040	400				-9701
A (99657-20040)	4				-9701
99655-30045	450				-9701
A (99657-20045)	4				-9701
99655-30050	500				-9701
A (99657-20050)	4				-9701
99655-30055	550				-9701
A (99657-20055)	4				-9701
99655-30060	600				-9701
A (99657-20060)	4				-9701
99657-20005	50				9701-
	4				9701-
99657-20010	100				9701-
	4				9701-
99657-20015	150				9701-
	4				9701-
99657-20020	200				9701-
	4				9701-
99657-20025	250				9701-
	4				9701-
99657-20030	300				9701-
	4				9701-
99657-20035	350				9701-
	4				9701-
99657-20040	400				9701-
	4				9701-
99657-20045	450				9701-
	4				9701-
99657-20050	500				9701-
	4				9701-
99657-20055	550				9701-
	4				9701-
99657-20060	600				9701-
	4				9701-
37-600J	1	WHEEL, DISK-TEMPORARY			
99652-14040	1	4TX14 P=100/D=45			

9701 NB353K-138751

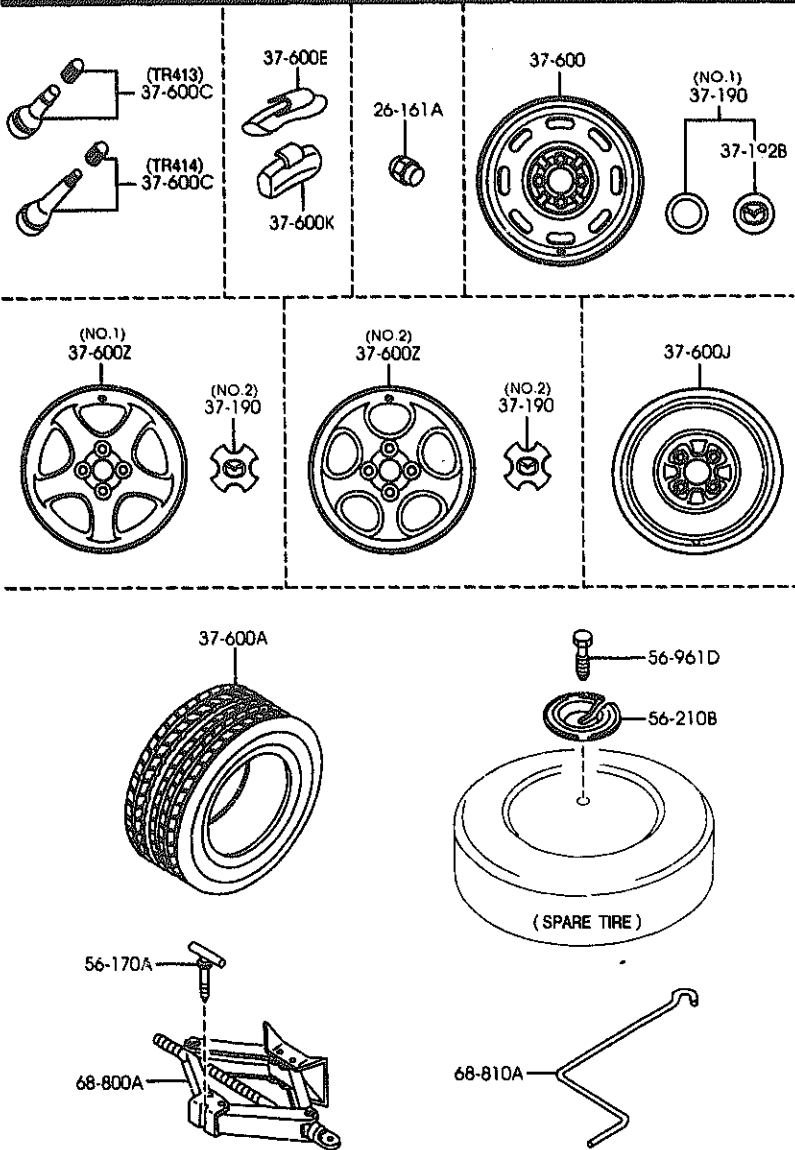
AUNA07

(1N05870)

CAT. AUNA07-05

2000-01

3700A TIRES & JACK



3700A -3 TIRES & JACK

PART NO.	QTY	MODEL/RESTRICTION	MODEL/RESTRICTION	MODEL/RESTRICTION	FROM-TO
37-600K		WEIGHT, DISC WHEEL-AL			
99655-90005 A (99657-30005)	4	50 FOR 1-PIECE WHL			-9701
99655-90010 A (99657-30010)	4	100 FOR 1-PIECE WHL			-9701
99655-90015 A (99657-30015)	4	150 FOR 1-PIECE WHL			-9701
99655-90020 A (99657-30020)	4	200 FOR 1-PIECE WHL			-9701
99655-90025 A (99657-30025)	4	250 FOR 1-PIECE WHL			-9701
99655-90030 A (99657-30030)	4	300 FOR 1-PIECE WHL			-9701
99655-90035 A (99657-30035)	4	350 FOR 1-PIECE WHL			-9701
99655-90040 A (99657-30040)	4	400 FOR 1-PIECE WHL			-9701
99655-90045 A (99657-30045)	4	450 FOR 1-PIECE WHL			-9701
99655-90050 A (99657-30050)	4	500 FOR 1-PIECE WHL			-9701
99655-90055 A (99657-30055)	4	550 FOR 1-PIECE WHL			-9701
99655-90060 A (99657-30060)	4	600 FOR 1-PIECE WHL			-9701
99657-30005	4	50 FOR 1-PIECE WHL			9701-
99657-30010	4	100 FOR 1-PIECE WHL			9701-
99657-30015	4	150 FOR 1-PIECE WHL			9701-
99657-30020	4	200 FOR 1-PIECE WHL			9701-
99657-30025	4	250 FOR 1-PIECE WHL			9701-
99657-30030	4	300 FOR 1-PIECE WHL			9701-
99657-30035	4	350 FOR 1-PIECE WHL			9701-
99657-30040	4	400 FOR 1-PIECE WHL			9701-
99657-30045	4	450 FOR 1-PIECE WHL			9701-
99657-30050	4	500 FOR 1-PIECE WHL			9701-
9701 N8553K-138751					

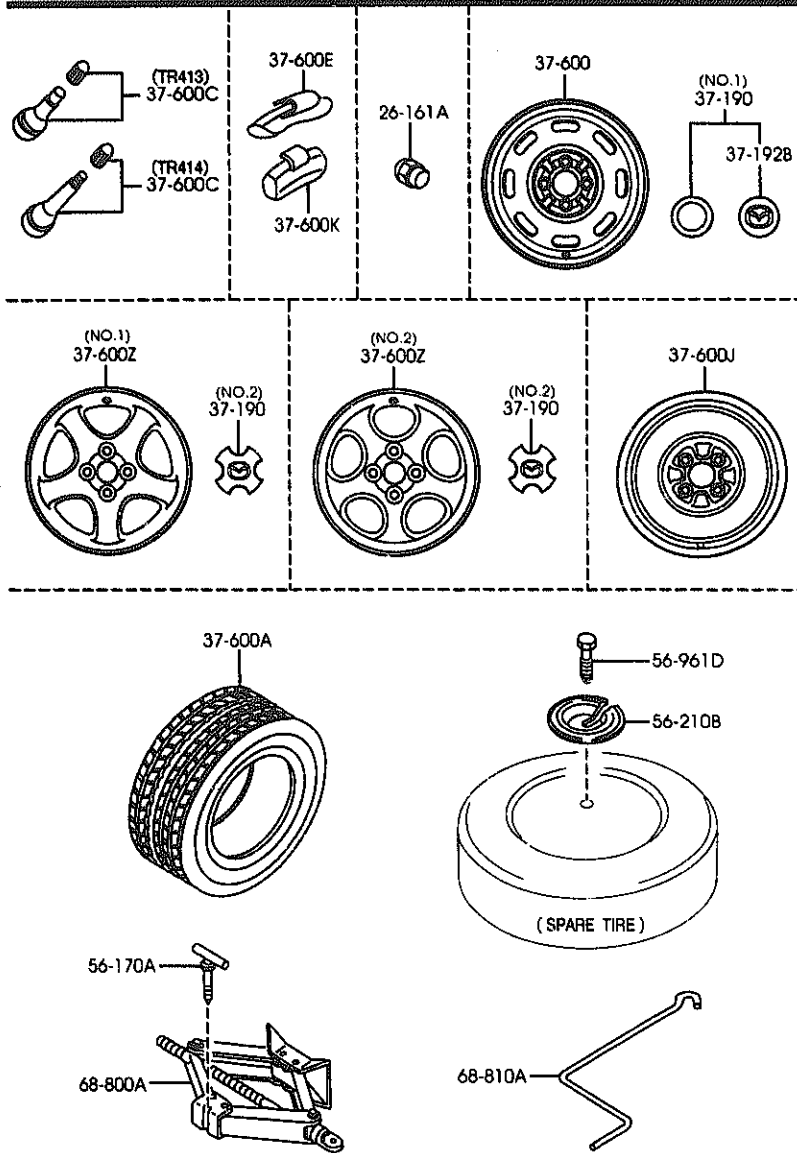
AUNA07

(1N05870)

CAT. AUNA07-05

2000-01

3700A TIRES & JACK



3700A -4 * TIRES & JACK

PART NO.	QTY	MODEL/RESTRICTION	MODEL/RESTRICTION	MODEL/RESTRICTION	FROM-TO
CONT'D					
99657-30055	4	550 FOR 1-PIECE WHL			9701-
99657-30060	4	600 FOR 1-PIECE WHL			9701-
37-600Z		WHEEL, DISC-ALUMI.			
9965F-66050	4	6JXX15 P=100/D=40 (ILLUST. NO.1) (SILVER)			
9965H-66050	4	6JXX15 P=100/D=40 (ILLUST. NO.1) (BUFF FINISHING)			
99652-56040	4	6JXX14 ENKEI (ILLUST. NO.2)			
56-170A		BOLT, JACK SET			
B001-56-170C	1				
56-210B		CLAMP, SPARE TIRE			
GASR-56-971A AN(GASR-56-971B)	1				-8C03
GASR-56-971B AN(GASR-56-971C)	1				8C03-9801
GASR-56-971C	1				9801-
56-961D		BOLT			
T001-56-961	1	L=60MM			
68-800A		JACK			
B455-37-790A A (B455-37-790B)	1				-8514
B455-37-790B	1				8514-8901
B25D-37-790	1				8901-
68-810A		HANDLE, JACK			
D201-37-810	1	((MT))>(6-SP) (AT)			-9201
GJ21-37-810	1	((MT))>(5-SP) (AT)			
D201-37-810	1	((MT))>(5-SP) (AT)			9201-
8514 NB353*-117642					
8901 NB353*-122306					
8C03 NB353*-125134					
9201 NB353*-130051					
9701 NB353*-130751					
9801 NB353*-139968					

AUNA07

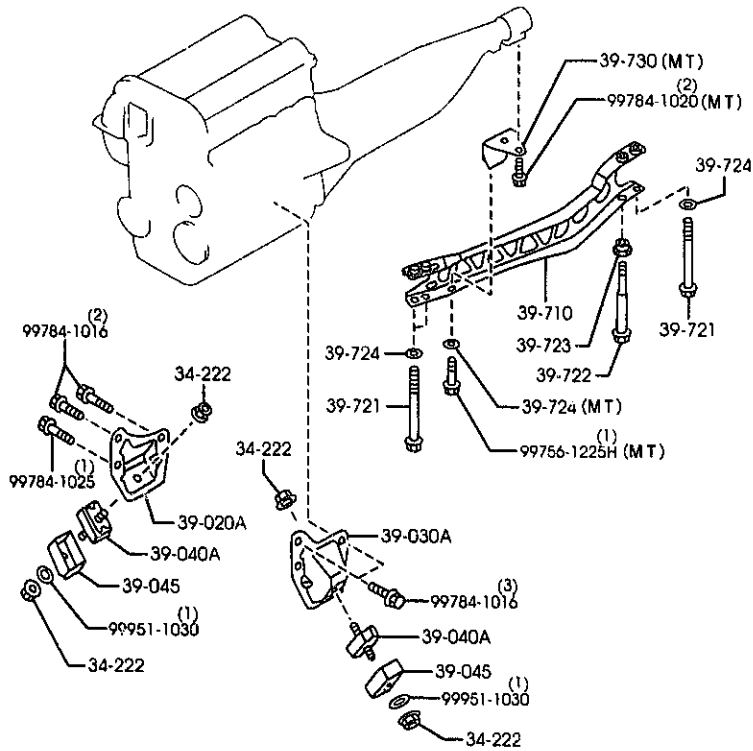
(1N05870)

CAT. AUNA07-05

2000-01

3900A ENGINE & T/MISSION MOUNTINGS

3900A -1 * ENGINE & T/MISSION MOUNTINGS



PART NO.	QTY	MODEL/RESTRICTION	MODEL/RESTRICTION	MODEL/RESTRICTION	FROM-TO
34-222		NUT			
8871-34-222	4				
39-020A		BRACKET(R),ENGINE			
NC10-39-020	1				
39-030A		BRACKET(L),ENGINE			
NA75-39-030	1				
39-040A		RUBBER,ENGINE MT.			
NC10-39-040	2				
39-045		CASING,STOPPER			
NA01-39-041A	2				
39-710		FRAME,POWER PLANT			
NC10-39-710A	1 (MT)				
NC13-39-710A	1 (AT)				
39-721		BOLT,PLANT FRAME			
NA01-39-721	3				
39-722		BOLT,PLANT FRAME			
NA01-39-722	1				
39-723		SPACER,PLANT FRAME			
NA01-39-723	1				
39-724		WASHER,PLAIN-FRAME			
NA01-39-724	3 (AT)				
NA01-39-724	4 (MT)				
39-730		BRACKET,PLANT FRAME			
NA01-39-730A	1 (MT)				



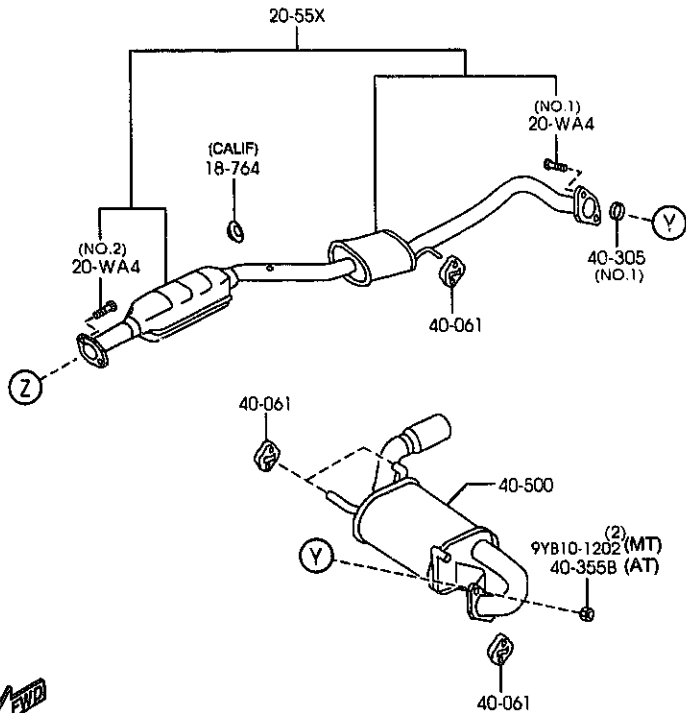
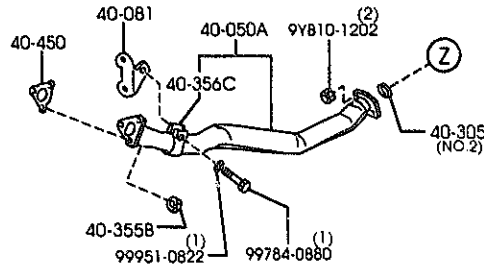
AUNA07

(1N08050)

CAT. AUNA07-05

2000-01

4000A EXHAUST SYSTEM



AUNA07

(1N08060)

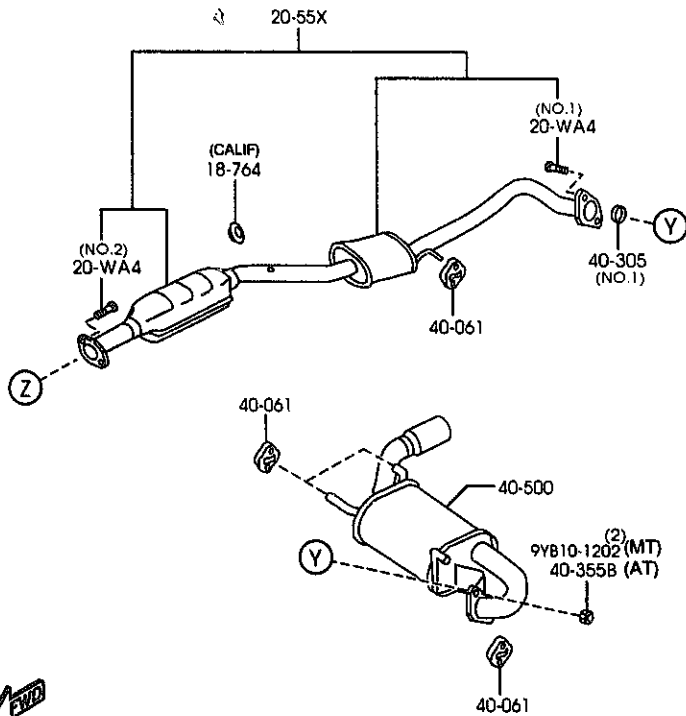
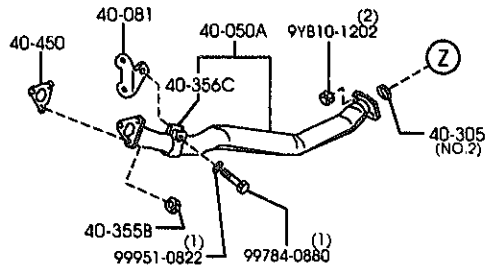
4000A -1 EXHAUST SYSTEM

PART NO.	QTY	MODEL/RESTRICTION	MODEL/RESTRICTION	MODEL/RESTRICTION	FROM-TO
18-764 B366-18-764	1	CAP, BLIND-THERMO SENSOR (CALIF)			
20-WA4 Z502-20-WA4 A (FP13-20-WA4)	2	BOLT (ILLUST. NO.1) (AT)			-8B25
KF6B-20-WA5 AN(BP5B-20-WA5)	2	(ILLUST. NO.1) (MT)			-8B25
KF6B-20-WA5 AN(BP5B-20-WA5)	2	(ILLUST. NO.2)			-8B25
FP13-20-WA4	2	(ILLUST. NO.1) (AT)			8B25-
BP5B-20-WA5	2	(ILLUST. NO.1) (MT)			8B25-
BP5B-20-WA5	2	(ILLUST. NO.2)			8B25-
20-55X		CONVERTER			
BP4W-20-55XH	1	((MT))>(FED)			
BP4X-20-55XH	1	((AT))>(FED)			
BP4Y-20-55XF	1	((MT))>(CALIF)			
BP4Z-20-55XF	1	((AT))>(CALIF)			
40-050A		PIPE, EXHAUST-FRONT			
BPMS-40-500C AN(BPM3-40-500D)	1				-7C16
BPM3-40-500D	1				7C16-
40-061		HANGER, SILENCER			
BP47-40-061 AN(BP47-40-061A)	4				-8201
BP47-40-061A	4				8201-
40-081		BRACKET, HANGER			
BPM1-40-080B	1	(MT)			
BPM2-40-080B	1	(AT)			
40-305		GASKET			
Z510-40-305	1	(ILLUST. NO.1) (AT)			
Z520-40-305	1	(ILLUST. NO.2)			
Z520-40-305	1	(ILLUST. NO.1) (MT)			
7C16 NB353R-101122 8201 NB353R-106606 8B25 NB353R-124579					

CAT. AUNA07-05

2000-01

4000A EXHAUST SYSTEM



AUNA07

(1N08060)

4000A -2 * EXHAUST SYSTEM

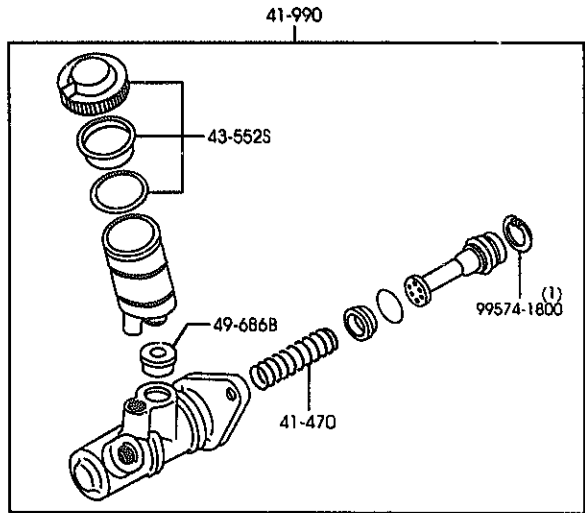
PART NO.	QTY	MODEL/RESTRICTION	MODEL/RESTRICTION	MODEL/RESTRICTION	FROM-TO
40-355B		NUT			
JE10-40-355	3	(MT)			
JE10-40-355	5	(AT)			
40-356C		BAND			
BPM1-40-356A A (BPM1-40-356B)	1				7C16
BPM1-40-356B	1				7C16-
40-450		GASKET, CONVERTER			
BPM1-40-450A	1				
40-500		SILENCER, MAIN			
BPM1-40-100C A (BPM1-40-100D)	1	(AT)			-8601
BPM3-40-100C AN (BPM3-40-100D)	1	(MT)			-8A19
BPM1-40-100D	1	(AT)			8601-
BPM3-40-100D	1	(MT)			8A19-

7C16 NB353*-101122
8601 NB353*-119466
8A19 NB353*-122952

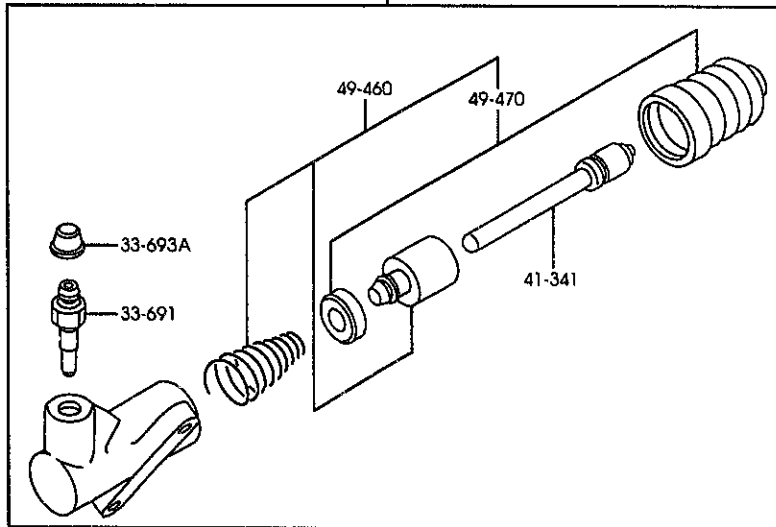
CAT. AUNA07-05

2000-01

4140A MANUAL TRANSMISSION CLUTCH RELEASE & MASTER CYLINDERS



41-920



AUNA07

(1N03030)

4140A -1 * MANUAL TRANSMISSION CLUTCH RELEASE & MASTER CYLINDERS

PART NO.	QTY	MODEL/RESTRICTION	MODEL/RESTRICTION	MODEL/RESTRICTION	FROM-TO
33-691		SCREW, BLEEDER			
0A5R-33-691	1				
33-693A		CAP, BLEEDER SCREW			
0259-33-693	1				
41-341		ROD, PUSH			
H266-41-341	1				-8901
NC10-41-341	1				8901-
41-470		SPRING			
B312-41-470	1				
41-920		CYL., CLUTCH RELEASE			
NA01-41-920	1				-8901
AN(NA01-41-920A)					
NA01-41-920A	1				8901-
41-990		CYL., CLUTCH MASTER			
NA01-41-400A	1				
43-552S		CAP SET, RESERVE TANK			
B093-49-580	1				
49-460		PARTS KIT, INNER			
H005-49-460	1				
49-470		SEAL KIT			
H005-49-470	1				
49-686B		BUSH, ELBOW JOINT			
0305-49-686B	1				

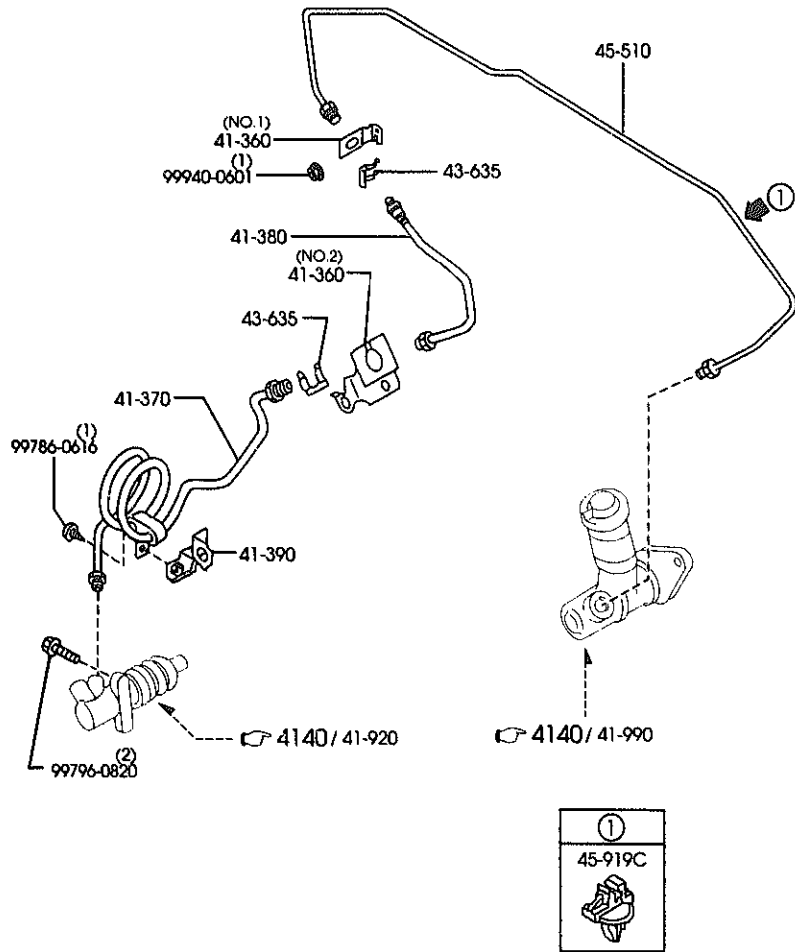
8901 NB353*-122306

CAT. AUNA07-05

2000-01

4145A MANUAL TRANSMISSION CLUTCH PIPINGS

4145A -1 * MANUAL TRANSMISSION CLUTCH PIPINGS



PART NO.	QTY	MODEL/RESTRICTION	MODEL/RESTRICTION	MODEL/RESTRICTION	FROM-TO
41-360		HOLDER, CLUTCH			
NC10-41-370	1	(ILLUST. NO.1)			
NC11-41-370	1	(ILLUST. NO.2)			
41-370		PIPE, CLUTCH			
NA75-41-360A	1				
41-380		HOSE, FLEXIBLE			
NC10-41-380	1				
41-390		HOLDER, PIPE			
NAD1-41-390	1				
43-635		CLIP, FLEXIBLE HOSE			
W023-43-635A	2				
45-510		PIPE, CLUTCH			
NAD1-45-510C	1	(W/O A. LOCK BRAKE)			
NC14-45-510A	1	(W/A. LOCK BRAKE)			
45-919C		CLIP, PIPE			
G030-45-919A	1				

AUNA07

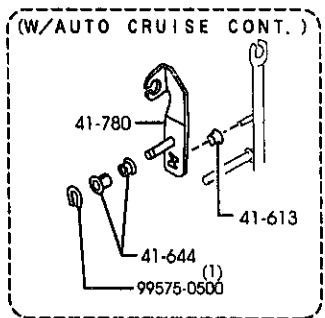
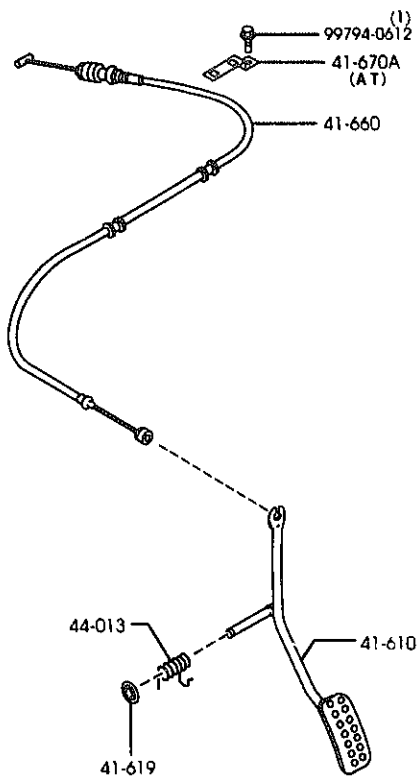
(1N1580)

CAT. AUNA07-05

2000-01

4160A ACCELERATOR CONTROL SYSTEM

4160A -1 * ACCELERATOR CONTROL SYSTEM



PART NO.	QTY	MODEL/RESTRICTION	MODEL/RESTRICTION	MODEL/RESTRICTION	FROM-TO
41-610B		PEDAL & ARM			
NA01-41-610B	1	(W/O AUTO CRUISE.CONT.)			
NA02-41-610B	1	(W/AUTO CRUISE.CONT.)			
41-613		ROLLER			
B104-41-114	1	(W/AUTO CRUISE.CONT.)			
41-619		SPRING, RETURN			
NA01-41-619	1				
41-644		BUSH			
0259-41-644	2	ONDO KOSAKUSHO (W/AUTO CRUISE.CONT.)			
41-660		CABLE, ACCEL.			
NC10-41-660A	1				
41-670A		BRACKET, CABLE			
N053-41-671A	1	(AT)			
41-780		LEVER, ACCELERATOR			
NA01-41-130A	1	(W/AUTO CRUISE.CONT.)			
44-013		WASHER			
H380-44-013	1				

AUNA07

(1N01940)

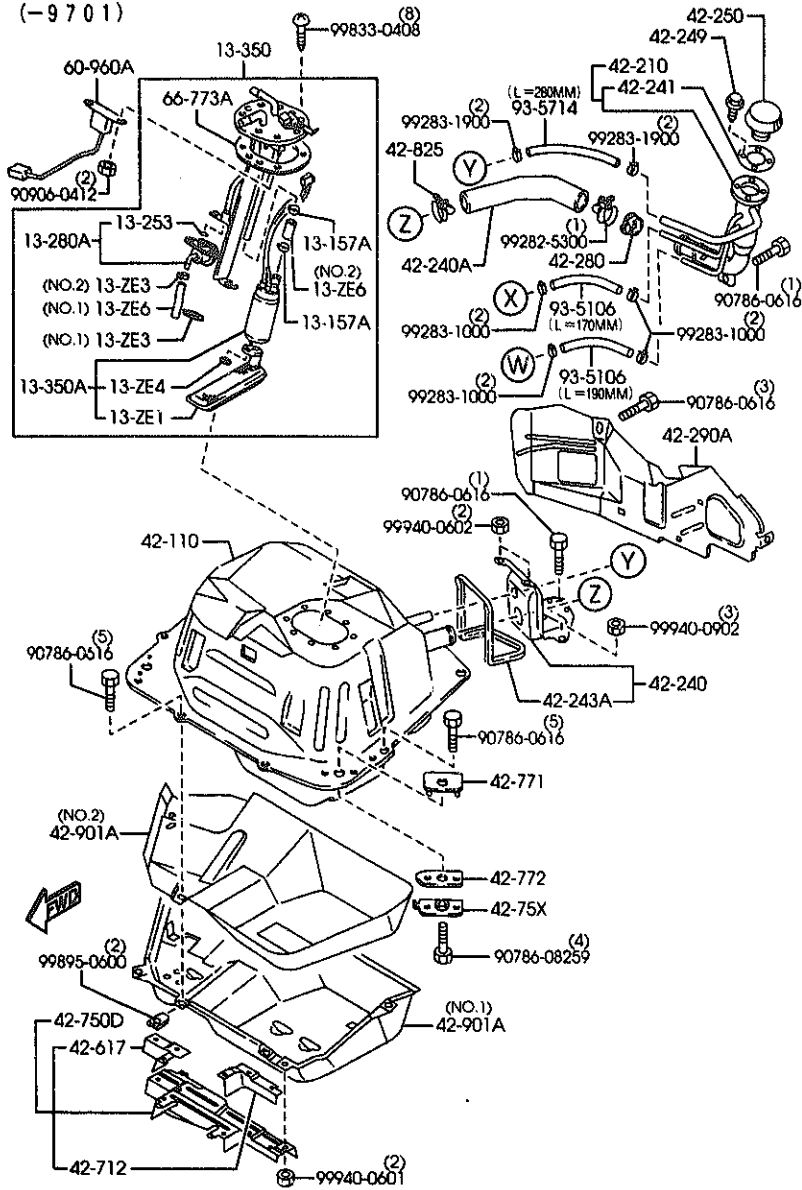
CAT. AUNA07-05

2000-01

4200A FUEL TANK

(1/4)

(-9701)



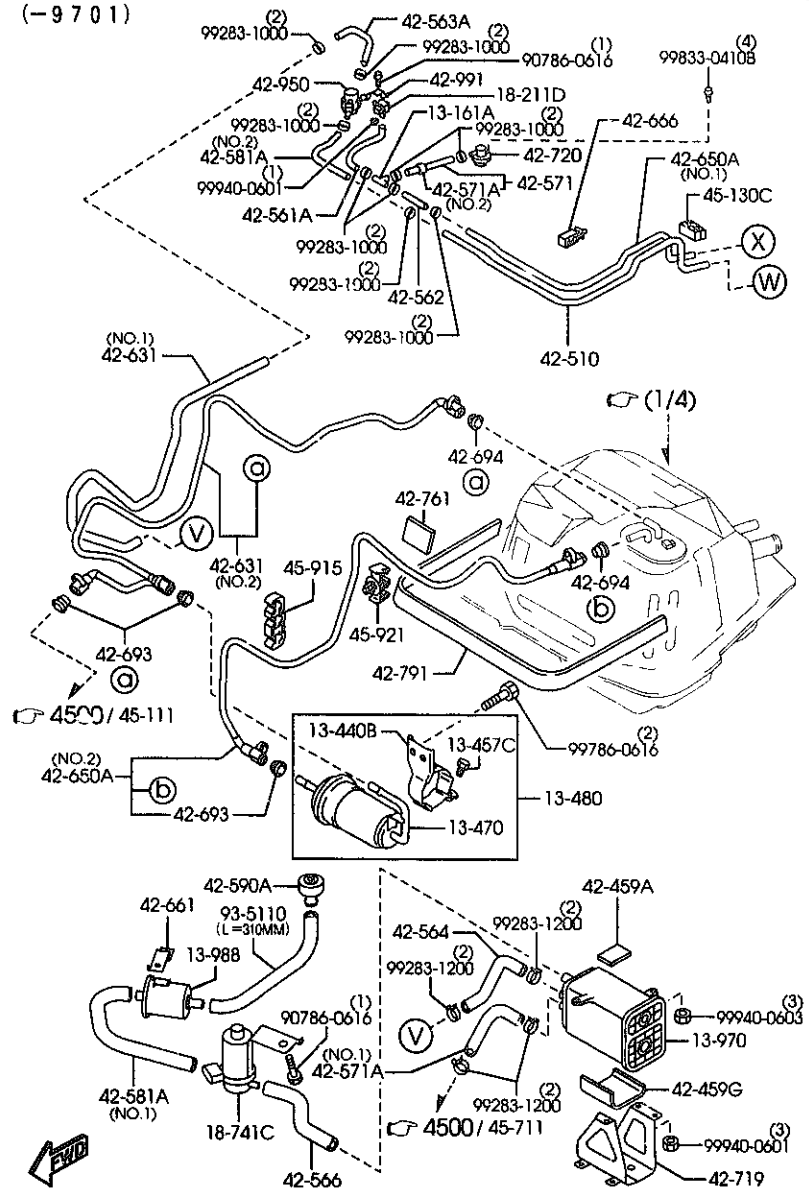
AUNA07

(1N03711)

4200A FUEL TANK

(2/4)

(-9701)



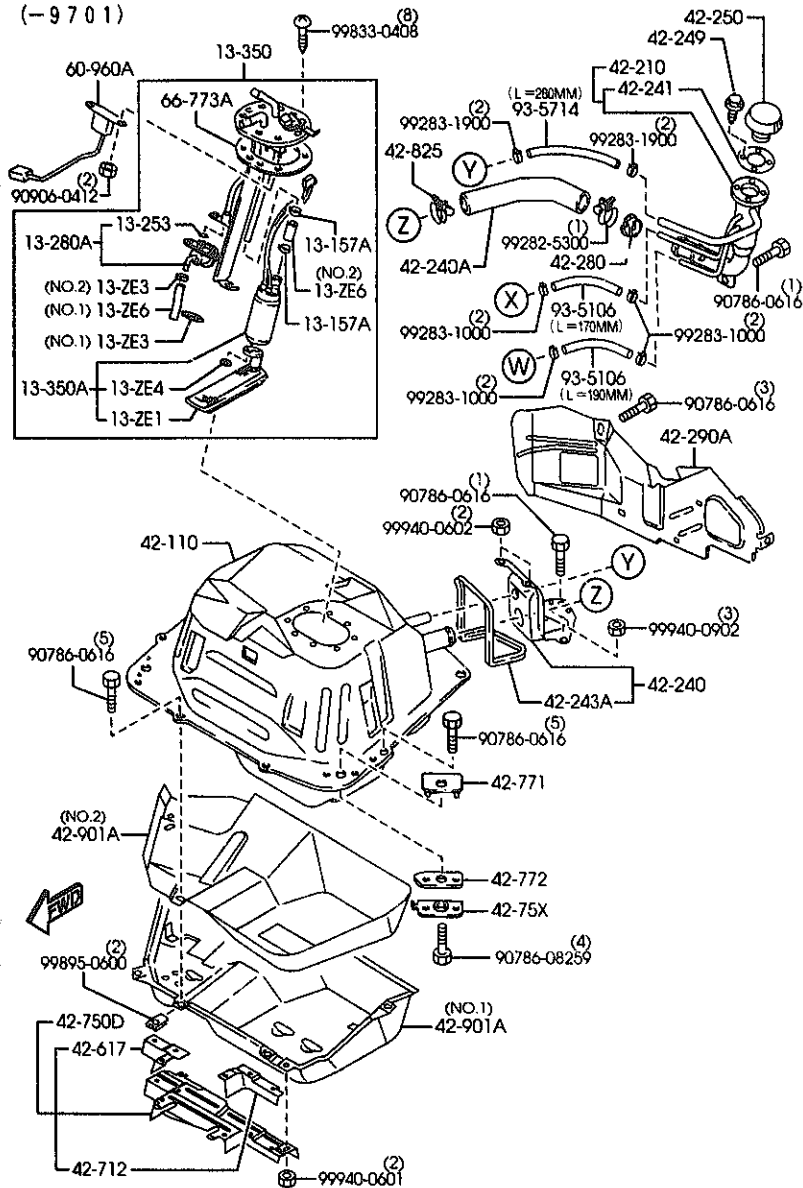
AUNA07

(1N03712)

4200A FUEL TANK

(1/4)

(-9701)



AUNA07

(1N03711)

4200A -1 FUEL TANK

PART NO.	QTY	MODEL/RESTRICTION	MODEL/RESTRICTION	MODEL/RESTRICTION	FROM-TO
13-ZE1	1	FILTER,FUEL PUMP			
BP4W-13-ZE1	1				
13-ZE3	1	CLIP,HOSE-FUEL HOSE			
BP4W-13-FD1	1	(ILLUST. NO.1)			
B62K-13-ZE3	1	(ILLUST. NO.2)			
13-ZE4	1	WASHER,LOCK-PUMP FILTER			
F8B3-13-ZE4	1	MITSUBISHI			-9501
FP34-13-ZE4	1	MITSUBISHI			9501-9801
AN(F8B3-13-ZE4)	1				9801-
F8B3-13-ZE4	1	MITSUBISHI			
13-ZE6	1	HOSE,FUEL PUMP-IN TANK			
BP4W-13-ZE2	1	(ILLUST. NO.1)			
KL19-13-ZE6	1	(ILLUST. NO.2)			
13-157A	2	CLIP			
AZ28-13-157	2				
13-161A	1	JOINT,T			
E580-13-161	1				-9701
13-253	1	RING,O			
B574-13-253	1				
13-280A	1	PRESSURE RG.,FUEL			
BP4W-13-280	1				-8C01
BP4W-13-280A	1				8C01-9501
A (BP4W-13-280B)	1				9501-
BP4W-13-280B	1				
13-350	1	PUMP,FUEL			
BP4W-13-35ZA	1				-7C03
A (BP4W-13-35ZB)	1				7C03-8320
BP4W-13-35ZB	1				8320-8C01
AN(BP4W-13-35ZC)	1				8C01-9501
BP4W-13-35ZC	1				
AN(BP4W-13-35ZD)	1				
BP4W-13-35ZD	1				
7C03		NB353#-100063			
8320		NB353#-112366			
8C01		NB353#-124914			
9501		NB353#-137711			
9701		NB353#-138751			
9801		NB353#-139968			

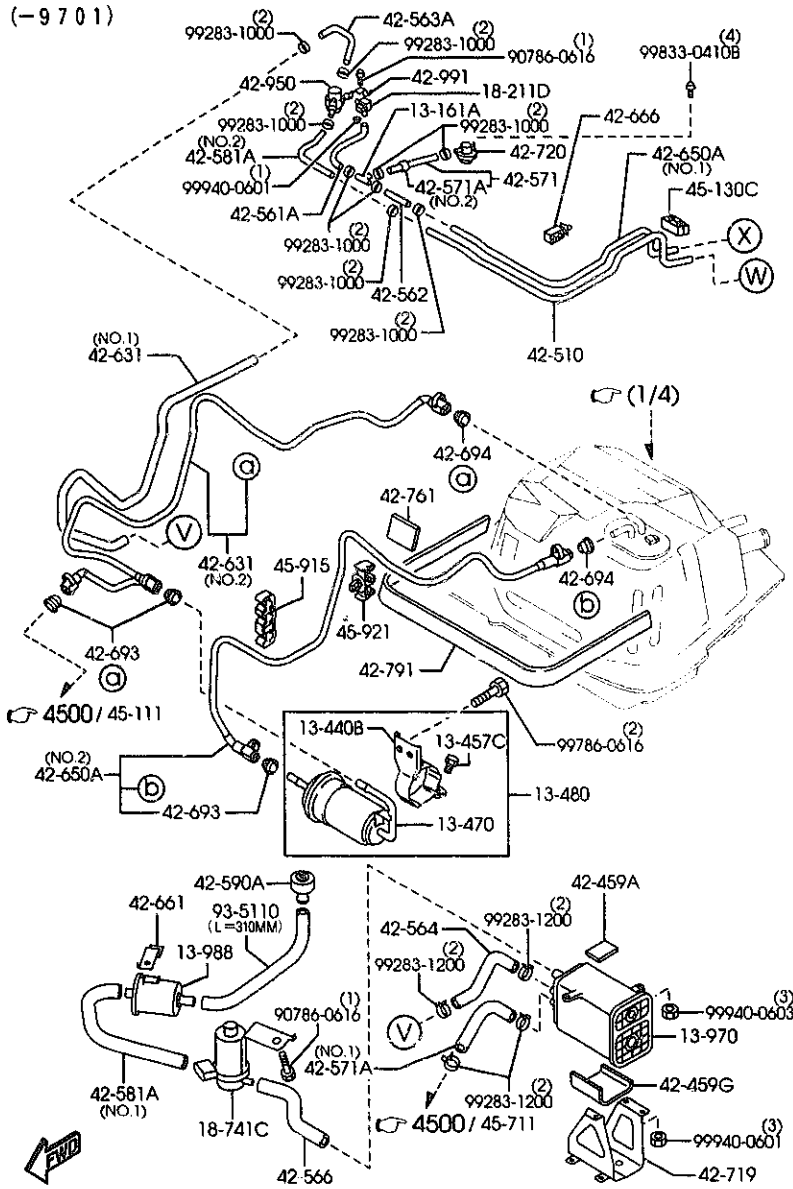
CAZ. AUNA07-05

2000-01

4200A FUEL TANK

(2/4)

(-9701)



AUNA07

(1N03712)

4200A -2 FUEL TANK

PART NO.	QTY	MODEL/RESTRICTION	MODEL/RESTRICTION	MODEL/RESTRICTION	FROM-TO
CONT'D					
AN(BP4W-13-35ZE)					
BP4W-13-35ZE	1				9501-9801
AN(BP4W-13-35ZF)					
BP4W-13-35ZF	1				9801-9901
C (BP4W-13-35ZG)					
BP4W-13-35ZG	1				9901-
13-350A		PUMP, FUEL-SUB			
BP4W-13-350A	1				
13-440B		BRACKET, FUEL FILTER			
BP4W-13-484	1				
13-457C		BOLT			
BP01-13-485	1				
13-470		FILTER, FUEL			
BP4W-13-480	1				
13-480		FILTER, FUEL			
BP4W-20-490B	1				
13-970		CANISTER			
BP4W-13-970	1				-9701
BP5R-13-970	1				9701-
13-988		FILTER, AIR			
Z526-13-988	1				-9701
KLG4-13-988	1				9701-
18-211D		SENSOR, BOOST			
JE96-18-211	1				
18-741C		VALVE, SOLENOID			
BP4W-18-741A	1				-9701
BP5R-18-741	1				9701-
42-110		TANK, FUEL			
NC10-42-110C	1				-9201
AN(NC10-42-110D)					
NC10-42-110D	1				9201-9501
BP4W-13-35ZF		9201 NB353*-130051			
C BP4W-13-35ZG	2	9501 NB353*-137711			
NC49-42-694		9701 NB353*-138751			
		9801 NB353*-139968			
		9901 NB353*-140606			

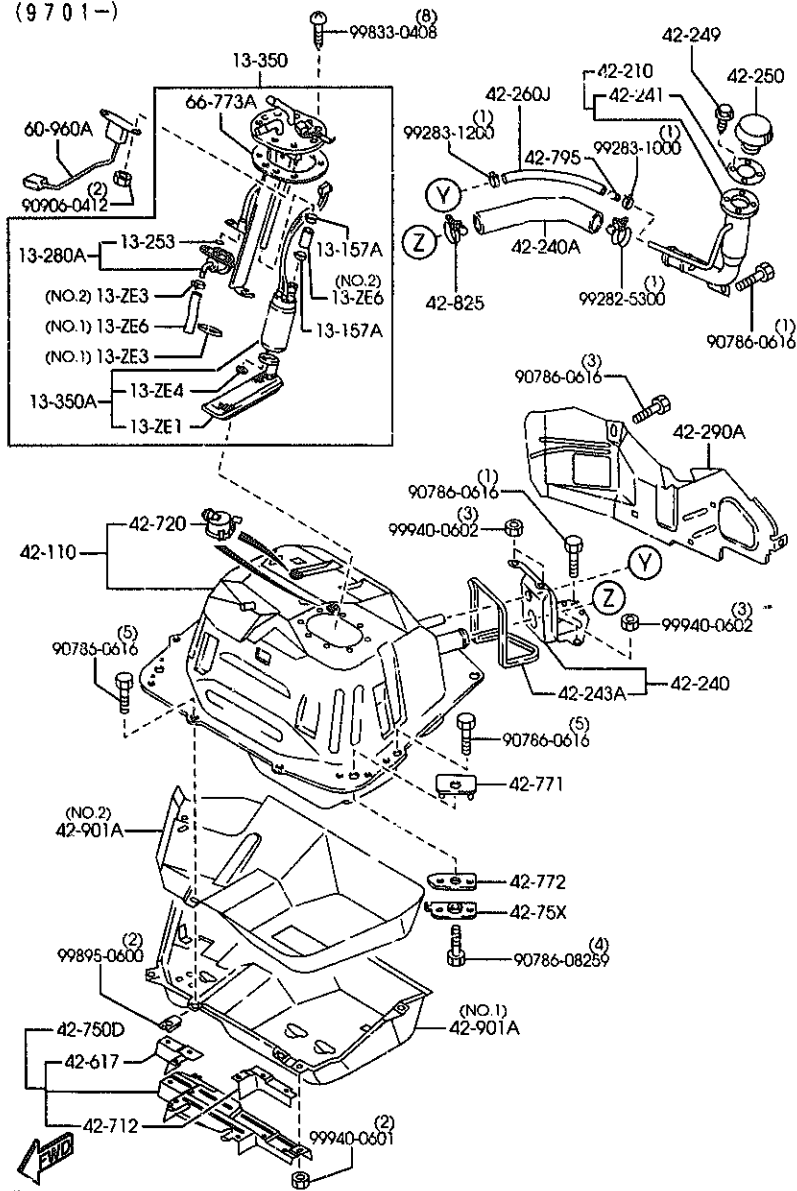
CAT. AUNA07-05

2000-01

4200A FUEL TANK

(3/4)

(9701-)



AUNA07

(1N03713)

4200A -5 FUEL TANK

PART NO.	QTY	MODEL/RESTRICTION	MODEL/RESTRICTION	MODEL/RESTRICTION	FROM-TO
CONT'D					
AN(NC10-42-110F)					
NC10-42-110F	1				9501-9701
NC49-42-110	1				9701-
42-210		PIPE, FILLER			
NC10-42-210D	1				-7C17
AN(NC10-42-210E)					
NC49-42-210B	1				0201-
NC10-42-210E	1				7C17-8305
AN(NC10-42-210F)					
NC10-42-210F	1				8305-8323
AN(NC10-42-210G)					
NC10-42-210G	1				8323-8B05
C (NC10-42-210H)					
NC10-42-210H	1				8B05-9701
NC49-42-210A	1				9701-0201
42-240		COVER, DUST			
NC10-42-240	1				-9701
NC49-42-240	1				9701-
42-240A		HOSE, JOINT			
NC10-42-231	1				
42-241		GASKET, FILLER PIPE			
0866-42-366B	1				
42-243A		GASKET 'A', DUST COVER			
NA01-42-233	1				
42-249		BOLT, FILLER PIPE			
NA01-42-249B	4				
42-250		CAP, FILLER			
NC10-42-250	1				-8B24
A (NC10-42-250A)					
NC10-42-250A	1				8B24-9701
NC49-42-250	1				9701-
42-260J		HOSE, BREATHER			
NC49-42-232	1				9701-
NC10-42-210G		7C17 NB353W-101341			
C NC10-42-210H		8305 NB353W-110055			
GE4T-42-270		8323 NB353W-112641			
		8B05 NB353W-123496			
		8B24 NB353W-124510			
		9501 NB353W-137711			
		9701 NB353W-138751			

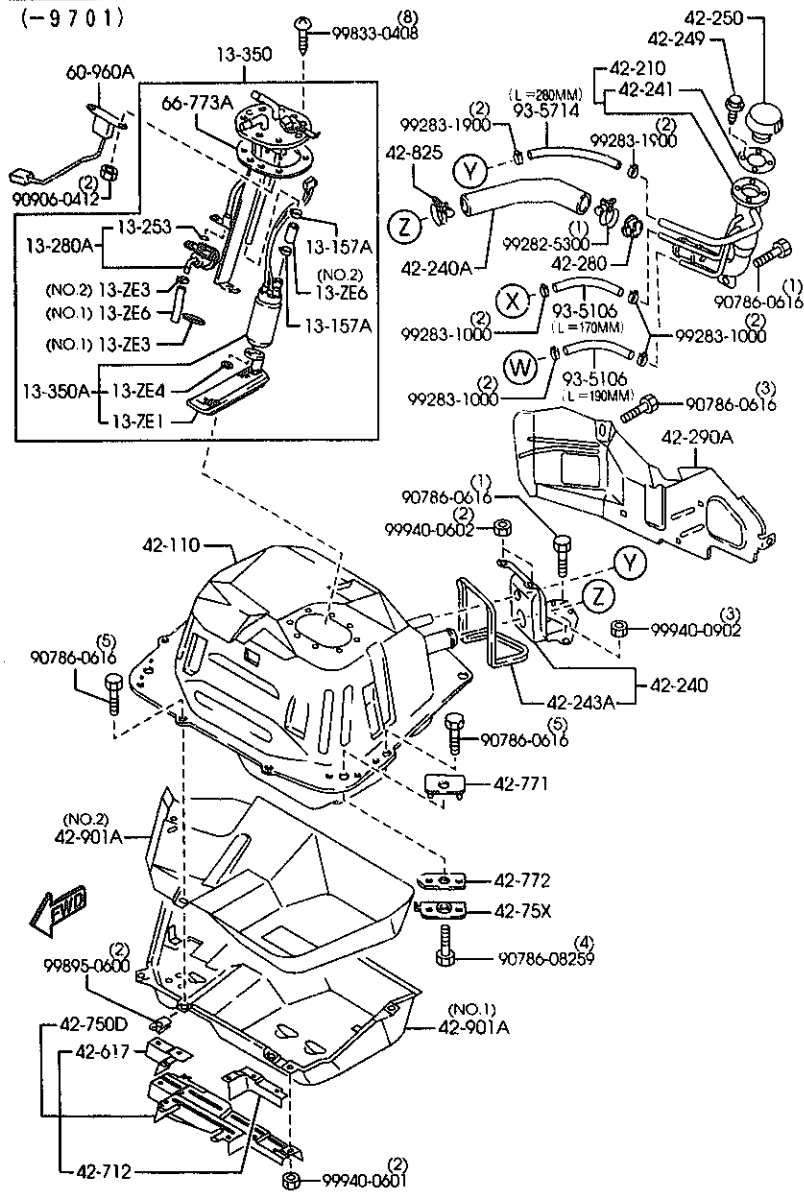
CAT. AUNA07-05

2000-01

4200A FUEL TANK

(1/4)

(-9701)



AUNA07

(1N03711)

4200A -5 FUEL TANK

PART NO.	QTY	MODEL/RESTRICTION	MODEL/RESTRICTION	MODEL/RESTRICTION	FROM-TO
CONT'D					
NC10-42-562A	1				-9701
42-562B		HOSE, FUEL			
NC49-42-562	1				9701-
42-563A		HOSE NO.3, BREATHER			
NC10-42-563	1				-9701
42-564		HOSE NO.4, BREATHER			
NC10-42-564	1				-9701
42-565A		HOSE, FUEL			
NC49-42-565A	1				9701-
42-566		HOSE NO.5, BREATHER			
NC10-42-566	1				-9701
42-566B		HOSE, FUEL			
NC49-42-566	1				9701-
42-567B		HOSE, FUEL			
NC49-42-567	1				9701-
42-568		HOSE, FUEL			
NC49-42-568A	1				9701-
42-571		HOSE, VENT			
NC10-42-570	1				-9701
42-571A		HOSE, FUEL			
NC10-42-565A	1	(ILLUST. NO.1)			-9701
NC10-42-571	1	(ILLUST. NO.2)			-9701
42-581A		HOSE, FUEL			
NC10-42-567	1	(ILLUST. NO.1)			-9701
NC10-42-568	1	(ILLUST. NO.2)			-9701
42-585A		JOINT			
LC62-42-585	1				9701-

9701 NB353*-138751

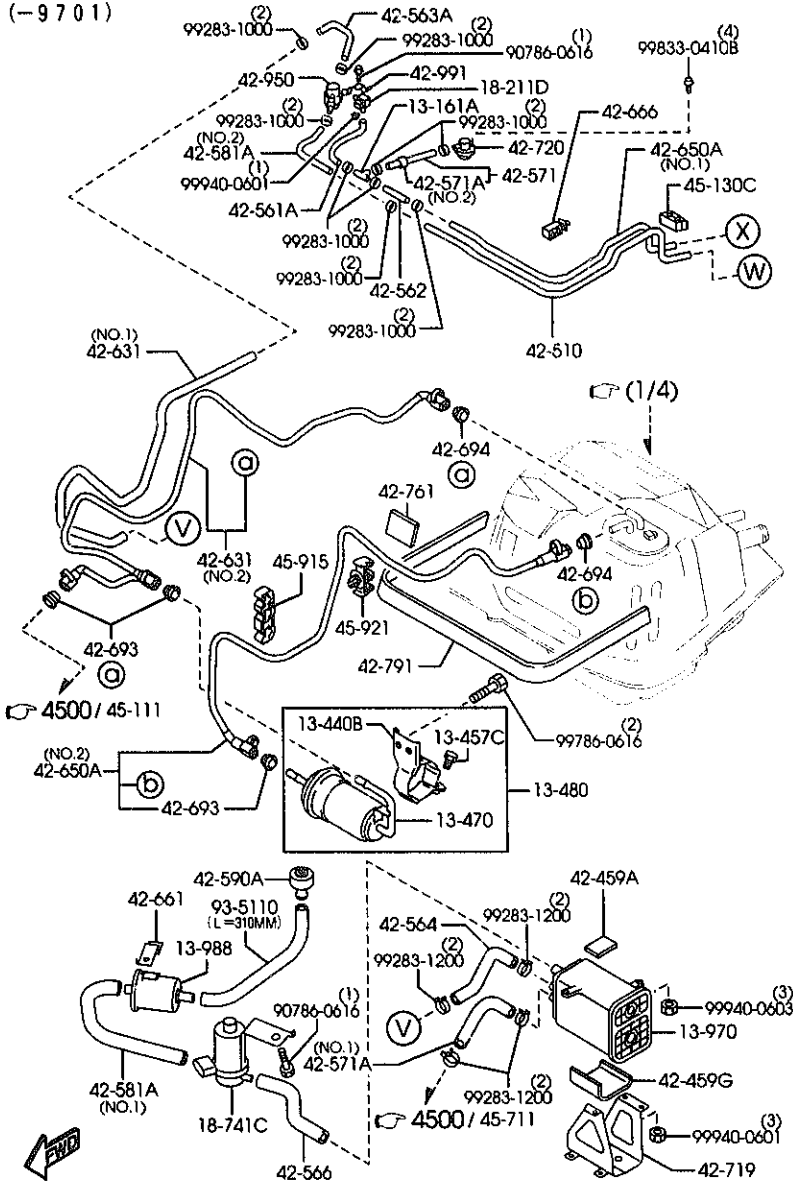
CAT. AUNA07-05

2000-01

4200A FUEL TANK

(2/4)

(-9701)



AUNA07

(1N03712)

4200A -6 FUEL TANK

PART NO.	QTY	MODEL/RESTRICTION	MODEL/RESTRICTION	MODEL/RESTRICTION	FROM-TO
42-590A		CHAMBER, EVAPO. - TANK BRKT			
NC10-42-590	1				-9701
NC49-42-590	1				9701-
42-617		PROTECTOR			
NC10-42-756	1				
42-631		PIPE, FUEL MAIN			
NC10-42-61YD A (NC10-42-61YE)	1	(ILLUST. NO. 2)			-7C03
NC10-42-513	1	(ILLUST. NO. 1)			-9701
NC10-42-61YE AN (NC10-42-61YD)	1	(ILLUST. NO. 2)			7C03-9801
NC10-42-61YD C (NC10-42-61YH)	1	(ILLUST. NO. 2)			9801-9901
NC10-42-61YH	1	(ILLUST. NO. 2)			9901-
42-650A		PIPE, FUEL			
NC10-42-61XD A (NC10-42-61XE)	1	(ILLUST. NO. 2)			-7C03
NC10-42-512A	1	(ILLUST. NO. 1)			-9701
NC10-42-61XE AN (NC10-42-61XD)	1	(ILLUST. NO. 2)			7C03-9801
NC10-42-61XD C (NC10-42-61XH)	1	(ILLUST. NO. 2)			9801-9901
NC10-42-61XH	1	(ILLUST. NO. 2)			9901-
42-661		BRACKET, FUEL PIPE			
NC10-42-558	1				-9701
42-666		CLIP			
NC10-42-591A	2				-9701
42-693		RETAINER			
T032-42-694	3				
42-694		RETAINER			
T032-42-694	2				-9901
NC49-42-694	2				9901-
42-712		PROTECTOR			
NC10-42-61YD C			7C03 NB353*-10063		
NC10-42-61YH			9701 NB353*-138751		
NC49-42-694	2		9801 NB353*-139968		
NC10-42-61XD C			9901 NB353*-140606		
NC10-42-61XH					
NC49-42-694	2				

CAT. AUNA07-05

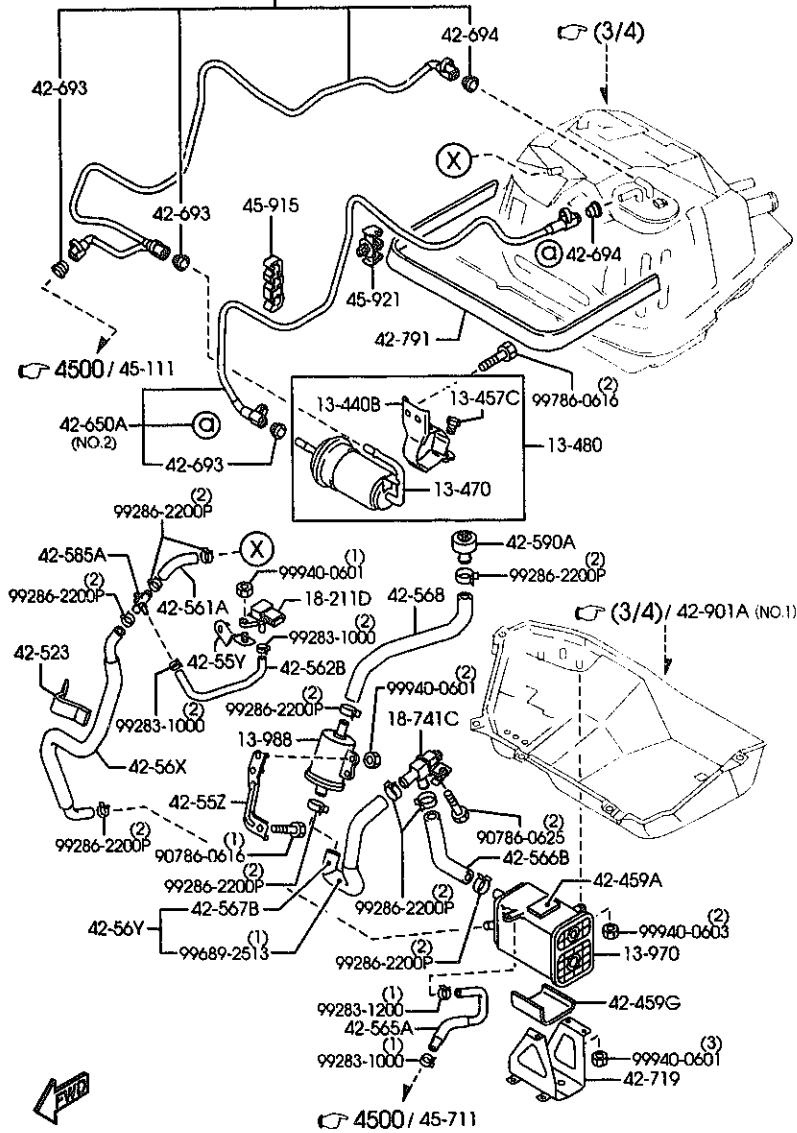
2000-01

4200A FUEL TANK

(4/4)

(9701-)

(NO.2)
42-631



4200A -B * FUEL TANK

PART NO.	QTY	MODEL/RESTRICTION	MODEL/RESTRICTION	MODEL/RESTRICTION	FROM-TO
42-991		BRACKET			
NC10-42-55Y	1				-9701
45-130C		RUBBER, MOUNTING			
NC10-42-663	1				-9701
45-915		CLIP, PIPE			
NA01-45-914	1				
45-921		CLIP, PIPE			
8210-45-917	1				
60-960A		GAUGE, FUEL TANK			
NC10-60-960	1				
66-773A		GASKET			
BP4W-60-962	1				
93-5106		HOSE			
99351-06999	1	L=1M CUT IT TO USE			-9701
93-5110		HOSE			
99351-10999	1	L=1M CUT IT TO USE			-9701
93-5714		HOSE			
99357-14999	1	L=1M CUT IT TO USE			-9701
9701 NB353R-138751					

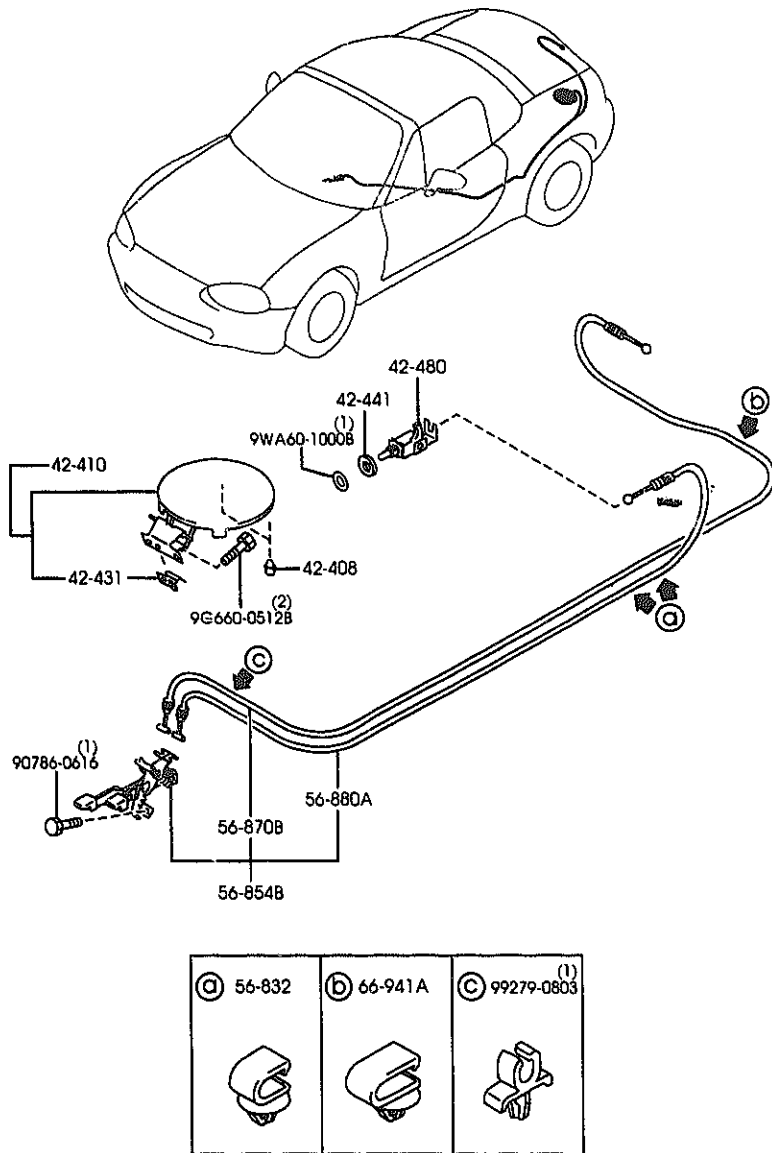
AUNA07

(1N03714)

CAT. AUNA07-05

2000-01

4210A FUEL LID OPENER



4210A -1 FUEL LID OPENER

PART NO.	QTY	MODEL/RESTRICTION	MODEL/RESTRICTION	MODEL/RESTRICTION	FROM-TO
42-408		STOPPER, FILLER LID			
0187-70-491	2				
42-410		LID, FUEL FILLER			
NC10-42-410B AN(NC10-42-410C)	1				-7C01
NC10-42-410C AN(NC10-42-410D)	1				7C01-9510
NC10-42-410D	1				9510-
42-431		SPRING LIFT, LID			
H043-42-431D	1				
42-441		WASHER, LID OPENER			
NA01-56-896	1				
42-480		OPENER, FILLER LID			
B095-56-890A AN(B095-56-890B)	1				-9118
B095-56-890B	1				9118-
56-832		CLIP 'B', OPENER CABLE			
NC10-56-832	2				
56-854B		OPENER, T/LID & F/LID			
NC10-56-850A AN(NC10-56-850B)	1				-9201
NC10-56-850B A (NC10-56-850C)	1				9201-9A01
*NC10-56-850C	1				9A01-
56-870B		CABLE, T/LID OPENER			
NC10-56-870A AN(NC10-56-870B)	1				-9201
NC10-56-870B A (NC10-56-870C)	1				9201-9A01
*NC10-56-870C	1				9A01-
56-860A		CABLE, F/LID OPENER			
NC10-56-880A AN(NC10-56-880B)	1				-9201
NC10-56-880B	1				9201-
7C01 NB353*-10063 9118 NB353*-128424 9201 NB353*-130051 9510 NB353*-137762 9A01 NB353*-141073					

AUNA07

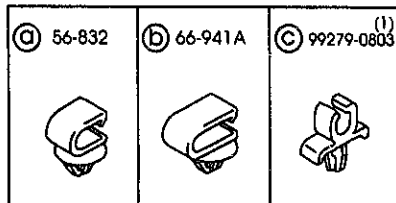
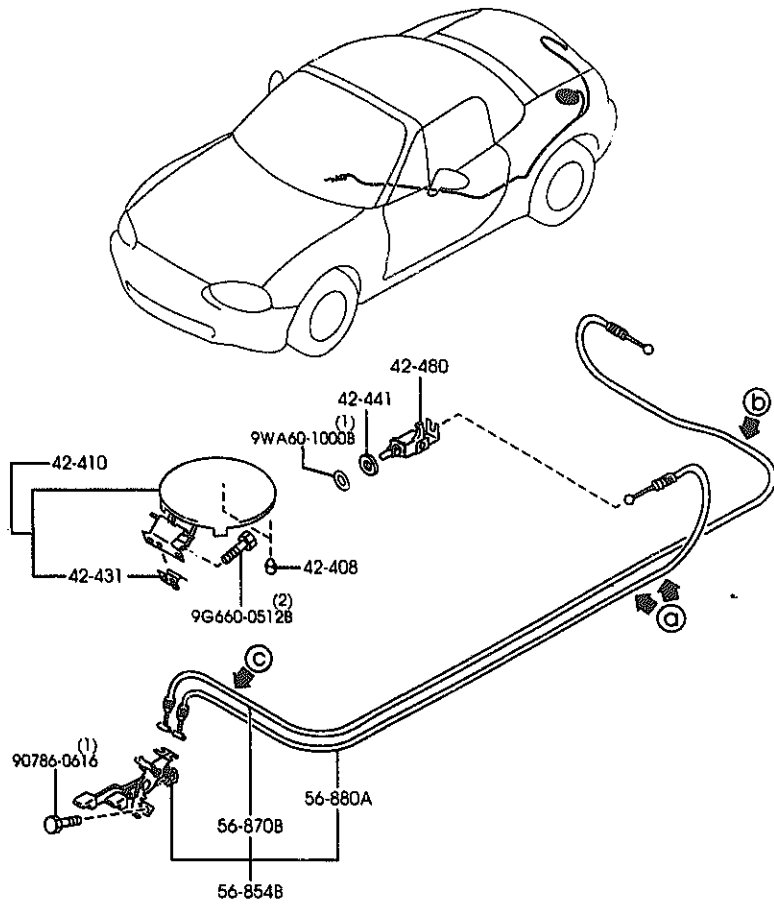
(1N04450)

CAT. AUNA07-05

2000-01

4210A FUEL LID OPENER

4210A -2 * FUEL LID OPENER



PART NO.	QTY	MODEL/RESTRICTION	MODEL/RESTRICTION	MODEL/RESTRICTION	FROM-TO
66-941A		CLIP			
M003-66-941	1				

AUNA07

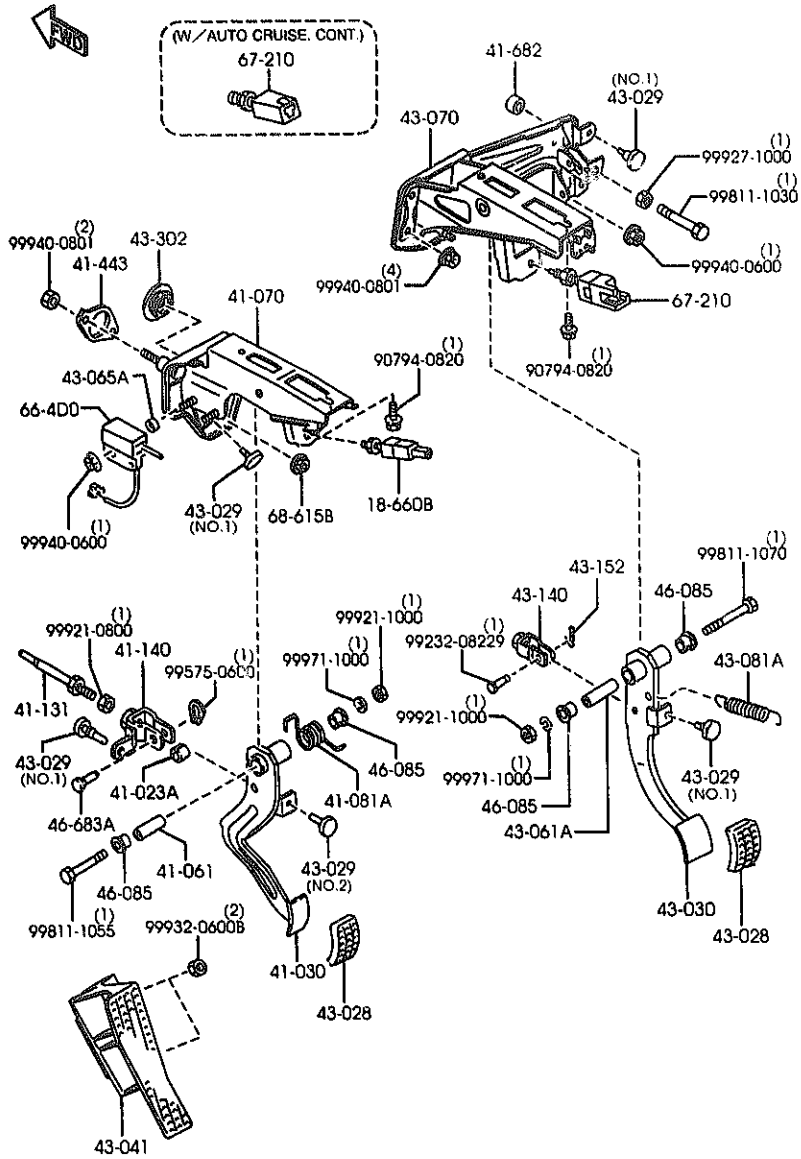
(1N04450)

CAT. AUNA07-05

2000-01

4300A MANUAL TRANSMISSION CLUTCH & BRAKE PEDALS

4300A -1 MANUAL TRANSMISSION CLUTCH & BRAKE PEDALS



PART NO.	QTY	MODEL/RESTRICTION	MODEL/RESTRICTION	MODEL/RESTRICTION	FROM-TO
18-660B		SWITCH, CLUTCH			
LA01-66-490A	1				
41-023A		BUSH			
0727-41-023	1				
41-030		PEDAL, CLUTCH			
NA01-41-030D AN(NA01-41-030E)	1				-8101
NA01-41-030E	1				8101-
41-061		SPACER			
0727-41-061	1				
41-070		BRACKET, MASTER CYL.			
NA01-41-070B AN(NA01-41-070C)	1				-8101
NA01-41-070C	1				8101-
41-081A		SPRING, RETURN			
BR70-41-081	1				
41-131		ROD, PUSH			
0824-41-131	1				
41-140		FORK, CLUTCH			
NA01-41-140B	1				
41-443		GASKET			
NA01-41-443	1				
41-682		RUBBER, STOP			
1456-41-682	1				
43-028		PAD, PEDAL			
B092-43-028	2				
43-029		RUBBER, STOPPER			
B001-43-029	4	KURDISHI TEKKO (ILLUST. NO.1)			
B030-43-029	1	OIRES KOGYO (ILLUST. NO.2)			

8101 NB355H-102707

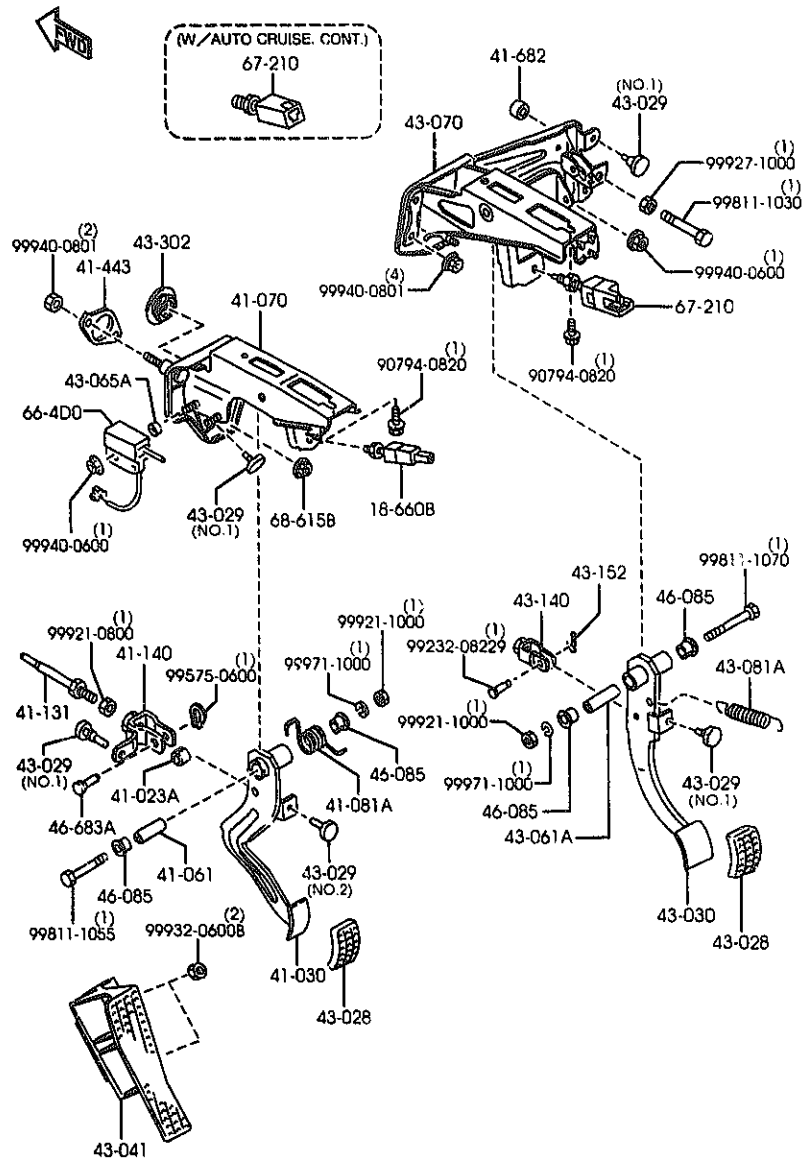
AUNA07

(1N04460)

CAT. AUNA07-05

2000-01

4300A MANUAL TRANSMISSION CLUTCH & BRAKE PEDALS



AUNA07

(1N04460)

4300A -2 MANUAL TRANSMISSION CLUTCH & BRAKE PEDALS

PART NO.	QTY	MODEL/RESTRICTION	MODEL/RESTRICTION	MODEL/RESTRICTION	FROM-TO
43-030		PEDAL, BRAKE			
NA01-43-030B	1				
43-041		REST, FOOT			
NC10-43-041	1				
43-061A		PIPE, PEDAL			
0866-43-062	1				
43-065A		SPACER			
BR70-43-065	1				
43-070		BRACKET, MASTER CYL.			
NA02-43-070C AN(NA02-43-070D)	1				-8801
NA02-43-070D	1				8801-
43-081A		SPRING, RETURN-BRAKE			
8092-41-081	1				
43-140		FORK, BRAKE			
1524-43-141	1				
43-152		PIN, SNAP			
D001-43-152	1				
43-302		GROMMET, BRAKE PEDAL			
B180-43-302	1				
46-085		BUSH			
1015-46-085	4				
46-683A		PIN			
0223-46-683	1				
66-4D0		SWITCH, CLUTCH CUT			
FB01-66-4D0	1				
67-210		SWITCH, STOP-LAMP			
BR70-66-490A	1	(W/AUTO CRUISE CONT.)			

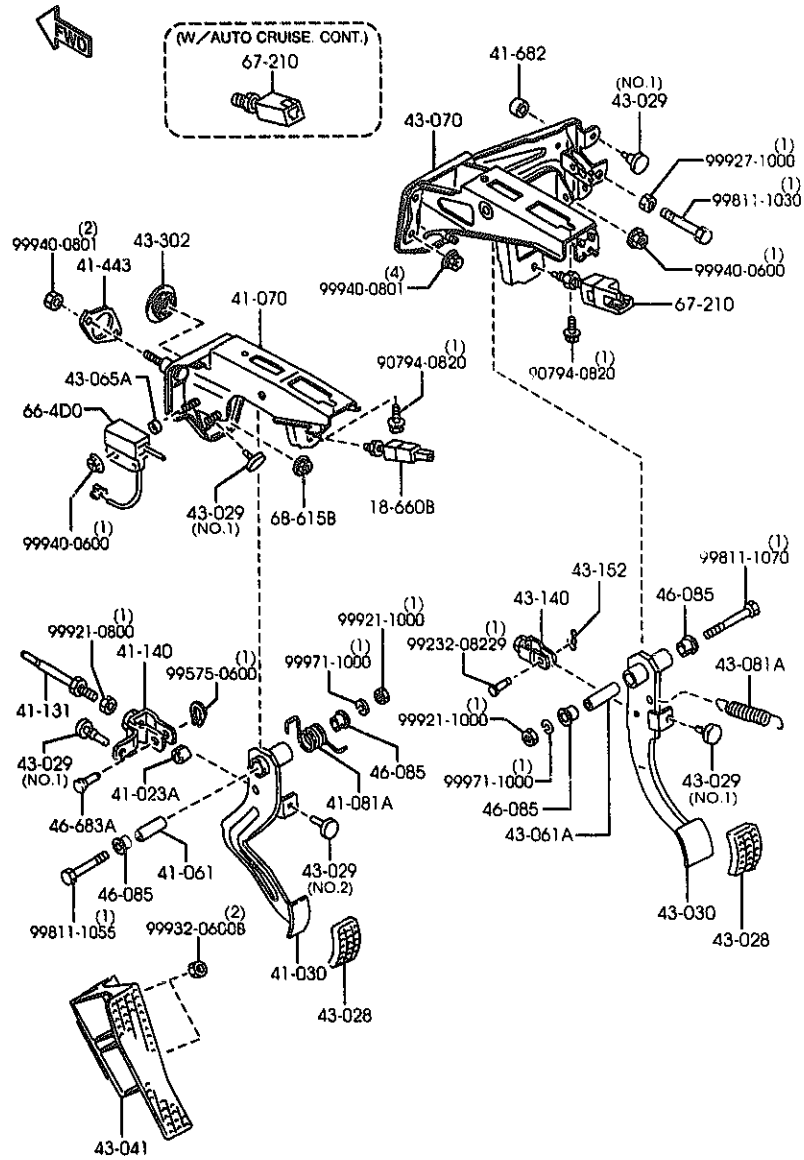
8801 NB353R-121854

CAT. AUNA07-05

2900-01

4300A MANUAL TRANSMISSION CLUTCH & BRAKE PEDALS

4300A -3 * MANUAL TRANSMISSION CLUTCH & BRAKE PEDALS



PART NO.	QTY	MODEL/RESTRICTION	MODEL/RESTRICTION	MODEL/RESTRICTION	FROM-TO
CDNT#D B001-66-490A	1	(W/O AUTO CRUISE CON T.)			-8801
UH71-66-490	1	(W/O AUTO CRUISE CON T.)			8801-
----- 68-615B -----		NUT, FLANGE-CAP			
B100-68-615	1				

8801 NB353*-121854

AUNA07

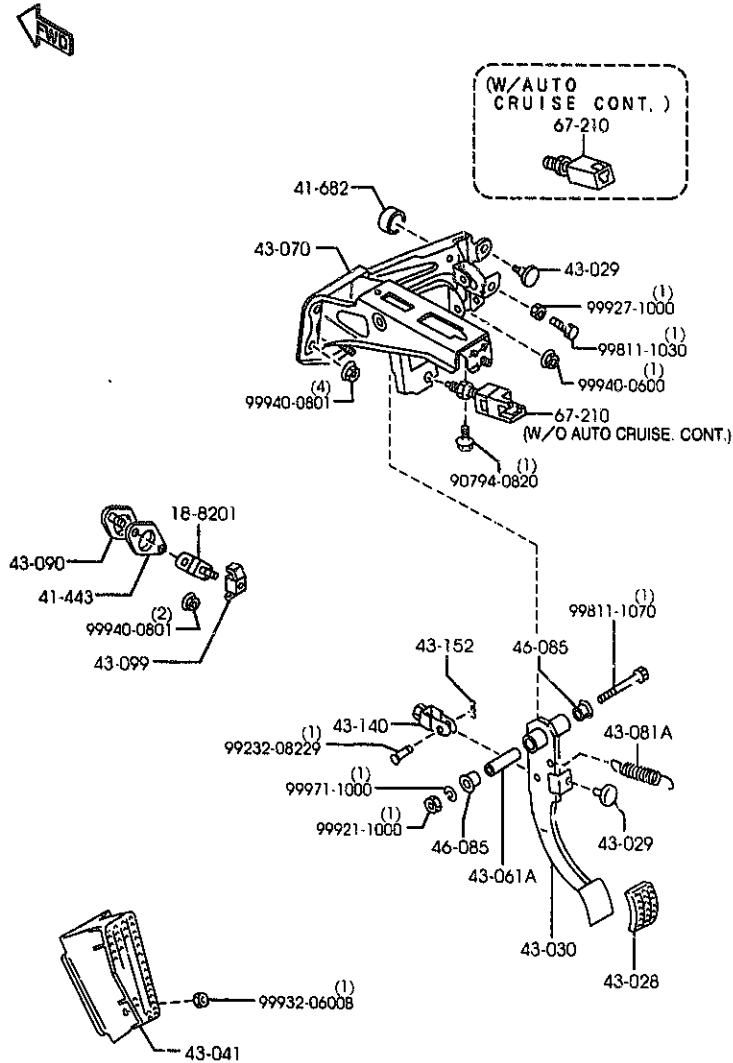
(1N04460)

CAT. AUNA07-05

2000-01

4300B AUTOMATIC TRANSMISSION BRAKE PEDAL

4300B -1 AUTOMATIC TRANSMISSION BRAKE PEDAL

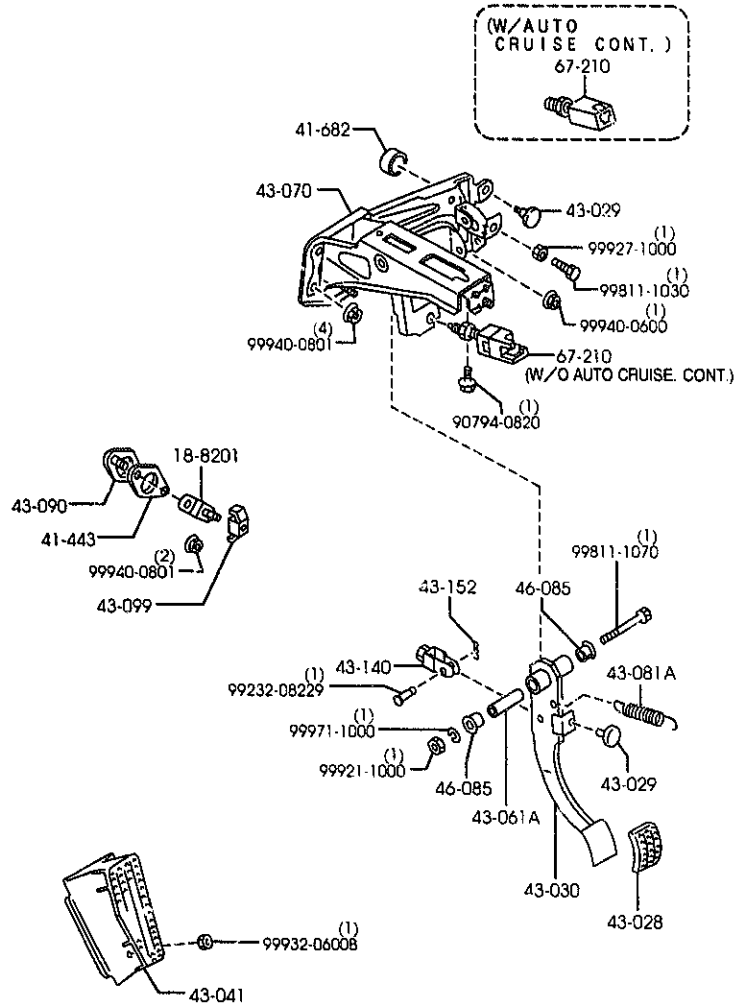


PART NO.	QTY	MODEL/RESTRICTION	MODEL/RESTRICTION	MODEL/RESTRICTION	FROM-TO
18-8201		BRACKET, CONTROL UNIT			
NA75-18-9453	1				
41-443		GASKET			
NA01-41-443	1				
41-682		RUBBER, STOP			
1456-41-682	1				
43-028		PAD, PEDAL			
0268-43-028	1				
43-029		RUBBER, STOPPER			
B001-43-029	2	KUROISHI TEKKO			
43-030		PEDAL, BRAKE			
NA03-43-030B	1				
43-041		REST, FOOT			
NC10-43-041	1				
43-061A		PIPE, PEDAL			
0866-43-062	1				
43-070		BRACKET, MASTER CYL.			
NA02-43-070C AN(NA02-43-670D)	1				
NA02-43-070D	1				
43-081A		SPRING, RETURN-BRAKE			
B092-41-081	1				
43-090		PLATE			
NA03-43-090A	1				
43-099		HOLDER, PLATE			
H123-43-099	1				
43-140		FORK, BRAKE			
1524-43-141	1				
8801 NB353R-121854					

-8801
8801-

4300B AUTOMATIC TRANSMISSION BRAKE PEDAL

4300B -2 * AUTOMATIC TRANSMISSION BRAKE PEDAL



PART NO.	QTY	MODEL/RESTRICTION	MODEL/RESTRICTION	MODEL/RESTRICTION	FROM-TO
43-152		PIN, SNAP			
3901-43-152	1				
46-085		BUSH			
1015-46-085	2				
67-210		SWTCH, STOP-LAMP			
3R70-66-490A	1	(W/AUTO CRUISE. CONT.)			
B001-66-490A	1	(W/O AUTO CRUISE. CONT.)			-8801
UH71-66-490	1	(W/O AUTO CRUISE. CONT.)			8801-
8801 NB353*-121854					

AUNA07

(1N01980)

CAT. AUNA07-05

2000-01

1-M16